

MECHTRIC

Power Distribution & Protection



Power Distribution and Protection: Mechtric's Expertise and Global Partnerships

With over 60 years of industry experience, Mechtric proudly partners with world-class manufacturers to deliver innovative solutions.

Mechtric offers a wide selection of **Power Distribution and Protection** solutions, including switch disconnectors, changeover switches, and enclosed isolators, designed to ensure safe and reliable control of electrical systems. The range is complemented by high-performance DIN-mount power supplies, providing stable and efficient energy management for industrial and commercial applications. Together, these products deliver robust protection, operational continuity, and compliance with international standards.

Through these partnerships, Mechtric delivers high-quality products, competitive pricing, and unparalleled technical support, empowering your business to perform at its best.



Power Distribution & Protection

Motor Control Gear

Switch disconnectors



Lovato

B-1...5

Changeover switches



Lovato

B-6

Motorised changeover switches



Lovato

B-7

Enclosed isolators



Lovato

B-8

Earth leakage relays



Lovato

B-9

Power Supplies

DIN-mount power supplies



Delta

B-11...12



Switch disconnectors



GA016A



GA125A



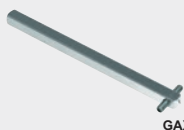
GAX42040A



GAX61



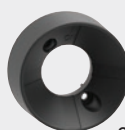
GAX63



GAX7200



GAX...N



GLX00



GAX60B

GA series - Load-break switches 16A - 160A

GA series load break switches (*also referred to as switch disconnectors*) are manufactured in robust, heavy-duty ABS materials, ensuring durability in diverse environments. With their modular DIN-rail mountable design and comprehensive range of accessories, these switches are versatile components suitable for various applications.

- Modular design DIN-rail mountable, supplied with direct mounted padlockable handle
- Door interlocking handle and shaft (*to be ordered separately*)

type	AC-23A ≤ 400V	AC-23A ≤ 415V	poles	description	dimensions (mm)		
					(H)	(W)	(D)

GA series - Three-pole load-break switches

Three-pole 16A - 45A

GA016A	16A	7.5 kW	3-pole	Isolator/load-break switch	78	36	75
GA025A	25A	11.0 kW	3-pole	Isolator/load-break switch	78	36	75
GA032A	32A	15.0 kW	3-pole	Isolator/load-break switch	78	36	75
GA040A	40A	18.5 kW	3-pole	Isolator/load-break switch	78	36	75
GA063SA	45A	22.0 kW	3-pole	Isolator/load-break switch	78	36	75

Three-pole 63A - 160A

GA063A	63A	30 kW	3-pole	Isolator/load-break switch	100	70	75
GA080A	80A	45 kW	3-pole	Isolator/load-break switch	100	70	75
GA125A	125A	55 kW	3-pole	Isolator/load-break switch	100	70	75
GA160A	160A	55 kW	3-pole	Isolator/load-break switch	100	70	75

Attachable 4th pole (for above 3-pole switches)

GAX42040A	40A	—	1-pole	attachable 4th pole for switches	GA016...40A		
GAX42063SA	63A	—	1-pole	attachable 4th pole for switches	GA063SA		
GAX42080A	80A	—	1-pole	attachable 4th pole for switches	GA063...80A		
GAX42125A	125A	—	1-pole	attachable 4th pole for switches	GA125A		
GAX42160A	160A	—	1-pole	attachable 4th pole for switches	GA160A		
GAX41040A	40A	—	1-pole	early make 4th pole for switches	GA016...40A		
GAX41125A	125A	—	1-pole	early make 4th pole for switches	GA063...125A		

Accessories for above GA series

Handles (external front operation)

IP65

- External door interlocking handles padlockable (3 padlocks) in "OFF" position

GAX61	red/yellow	door interlocking handle 65 mm ²	(screw fixing)	GA016...160A
GAX63	red/yellow	door interlocking handle 65 mm ²	(ring fix Ø22 mm)	GA016...160A
GAX63B	black	door interlocking handle 65 mm ²	(ring fix Ø22 mm)	GA016...160A
GAX64	red/yellow	as above - defeatable 65 mm ²	(ring fix Ø22 mm)	GA016...160A
GAX68	red/yellow	door interlocking handle 48 mm ²	(screw fixing)	GA016...40A/63SA
GAX66N*	red/yellow	door interlocking pistol grip handle	(defeatable)	GA063...160A
GAX66NB*	black	door interlocking pistol grip handle	(defeatable)	GA063A...160A

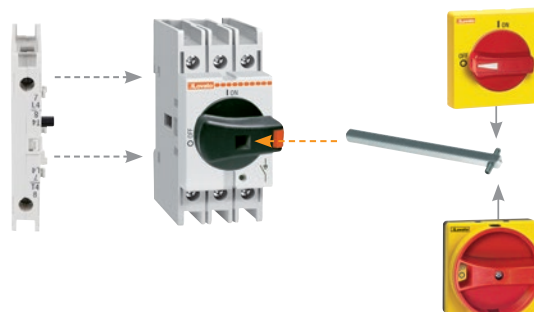
* Requires GAX60B adaptor (below) and 7 mm² extension shaft

GAX60B	adaptor to accommodate 7 mm ² shaft required for handles	GAX66N/NB
GLX00	shaft alignment ring for pistol grip handles	GAX66N/NB

Extension shafts (for above handles)

GAX7200	200 mm	□ 5 mm ²	extension shaft for handles	GAX61...8
GAX7300	300 mm	□ 5 mm ²	extension shaft for handles	GAX61...8
GAX7200AN	200 mm	□ 7 mm ²	extension shaft for handles	GAX66N/NB
GAX7300AN	300 mm	□ 7 mm ²	extension shaft for handles	GAX66N/NB

GA series - Switch disconnector / Accessories



Scan to watch video



GAX67B



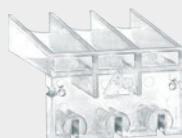
GAX6000



GAX1011A



GAX391



GAX83



GA025C



GA080C

type	contact / pole	description	for switch
------	----------------	-------------	------------

Changeover and parallel attachments for switches 16A - 160A

Changeover attachment

- To mechanically interlock two switches side-by-side to make up a changeover switch

GAX5000	I-O-II	changeover mechanism between two switches	GA016...40A/63SA
GAX5001	I-O-II	changeover mechanism between two switches	GA063...160A
GAX67B	black	door interlocking handle (I-O-II) for above changeover mechanisms	

Parallel attachment

- Combine two switches side-by-side to make up a 6/8 pole switch

GAX6000	I-O	6/8 pole conversion kit between two switches	GA016...40A/63SA
GAX6001*	I-O	6/8 pole conversion kit between two switches	GA063...125A

* Requires **GAX66N/NB** handles, **GAX60B** adaptor and 7 mm² extension shaft (see pg B-1)

Auxiliary contact blocks (lth 10A)

Auxiliary contact blocks are used to operate auxiliary circuits and control circuits in standard industrial environments.

- Clipping onto the right- and/or left-hand side of the switches

Auxiliary contacts

GAX1011A	1NO + 1NC	auxiliary	contact for DIN-rail mounting switches	GA016...160A
GAX1110EA	1NO	auxiliary	for DIN-rail mount switches (early-break)	GA016...40A/63SA
GAX1210EA	1NO	auxiliary	for DIN-rail mount switches (early-break)	GA063...160A

Three-pole fuse holder for load-break switches 16 - 32A

Three-pole fuse holder can be directly mounted onto 16 - 32A switch disconnectors to provide a single compact unit. Access to the fuses can only be made with the isolator in the OFF position.

Three-pole fuse holder

GAX391	10 x 38	3ph fuse holder (attaches onto switches)	GA016...032A
---------------	---------	------------------------------------------	--------------

Terminal shrouds for switches 16 - 160A

Three-pole terminal covers

GAX83	terminal	3-pole	protection shroud (set of 2 pcs)	GA016...40A/63SA
GAX84	terminal	3-pole	protection shroud (set of 2 pcs)	GA063...160A

Single-pole terminal covers (for 4th pole)

GAX81	terminal	1-pole	protection shroud (set of 2 pcs)	GA016...40A/63SA
GAX82	terminal	1-pole	protection shroud (set of 2 pcs)	GA063...160A

Direct door mounting switches (rear access terminals) with shaft

type	AC-21A ≤ 690V	AC-23A ≤ 415V	poles	description	dimensions (mm)		
					(H)	(W)	(D)
GA025C	25A	11.0 kW	3-pole	direct mnt load-break switch	78	36	73
GA040C	40A	18.5 kW	3-pole	direct mnt load-break switch	78	36	73
GA080C	80A	45.0 kW	3-pole	direct mnt load-break switch	100	70	70
GA125C	125A	55.0 kW	3-pole	direct mnt load-break switch	100	70	70

Accessories for (above) direct door-mounted switches

Attachable 4th pole

GAX42040C	40A	18.5 kW	1-pole	attachable 4th pole for switch	GA025...40C
GAX42125C	125A	55 kW	1-pole	attachable 4th pole for switch	GA080...125C

Handles for (above) direct door-mounted switches (IP65)

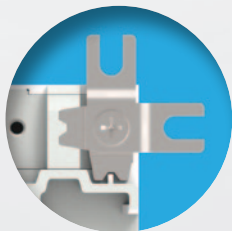
- External handles padlockable (3 padlocks) in "OFF" position

GAX61	red/yellow	door interlocking handle 65 mm ² (screw fixing)	GA025...125C
GAX68	red/yellow	door interlocking handle 48 mm ² (screw fixing)	GA025...40C
GAX63	red/yellow	door interlocking handle 65 mm ² (ring fix Ø 22 mm)	GA025...40C
GAX63B	black	door interlocking handle 65 mm ² (ring fix Ø 22 mm)	GA016...160A

Auxiliary contact blocks (lth 10A) (for above door mount switches)

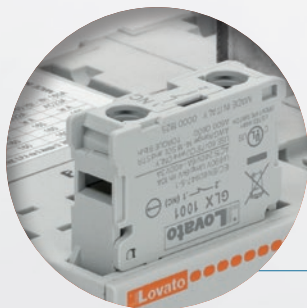
GAX1011C	1NO + 1NC	auxiliary	for direct door mount switches	GA025...125C
-----------------	-----------	-----------	--------------------------------	--------------

THE PERFECT SOLUTION



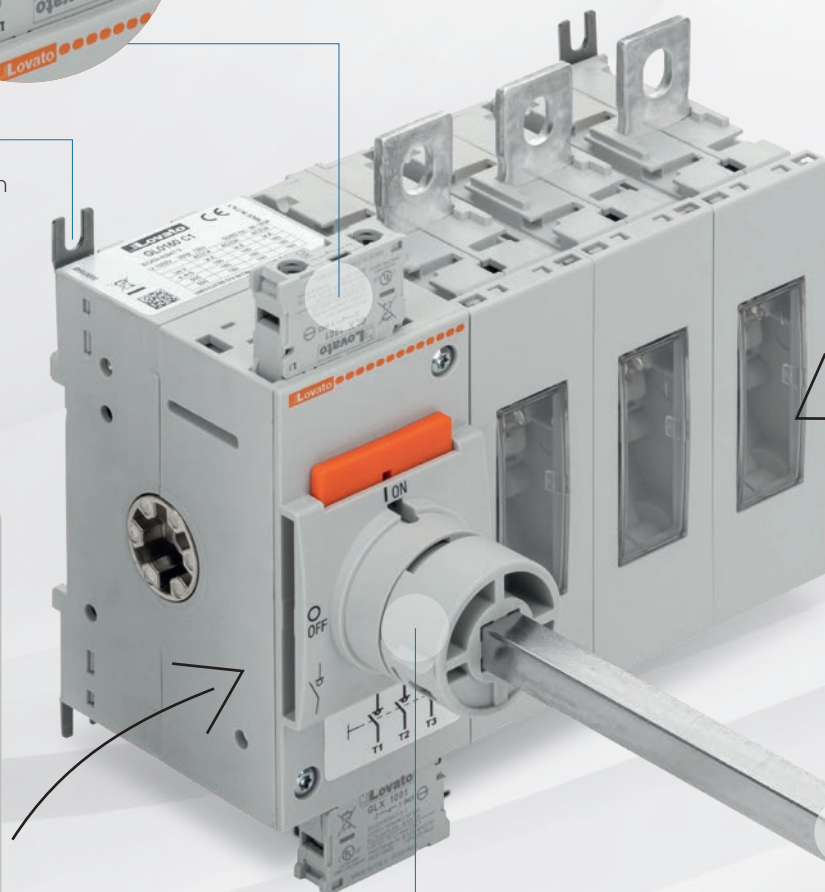
FLEXIBILITY

Switch disconnectors can be installed in all directions. The clips for screw fixing can be adjusted both in rotation and position (flexible fixing interaxis).



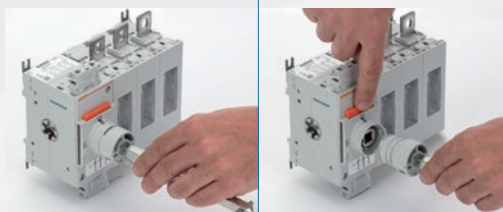
SNAP-ON AUXILIARY CONTACTS

Suitable for all the switch disconnectors and changeover switches, the snap-on contacts are mounted on the main switching actuator (max 8 contacts for switch disconnectors; max 4 contacts for changeover switches).



HIGH IEC ELECTRICAL CAPABILITY

The rated currents in AC23 up to 630A-415V and up to 500A-690V are the highest of the category.



Snap-on shaft mounting and dismounting



WIDE RANGE OF ACCESSORIES

A wide choice of auxiliary contacts, terminal covers, phase barriers, terminal clamps, bridging bars, shafts and handles are available to satisfy every installation need.





CAPTIVE NUTS

Accessory that allows even easier wiring of the terminals using a single key.

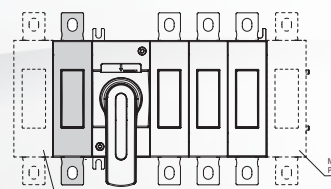
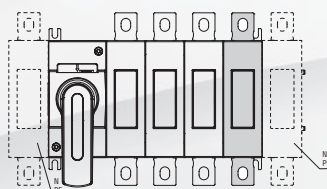


ANTI-SLIDE INSERT

For sizes from 160A to 315A there are two rubber pad inserts to prevent the sliding of switch disconnectors on the DIN rail.

MODULARITY OF COMPONENTS

It is possible to optimize the management of the various product configurations thanks to the modularity of the components: fourth pole, earth and neutral terminals can be mounted by the installer in the desired position.



SNAP-ON SHAFT MOUNTING

Shafts can be mounted and released with a simple snap action on the front of the switch. This feature allows fast installation and easy accessibility to the panel in case of maintenance.



HANDLES

Switch disconnectors and changeover switches are standard supplied without any handles. By purchasing the direct operating handle separately it is possible to create a direct operating version. The handles can be mounted and removed very easily thanks to the snap-on assembly.

> IP66, IP69K and NEMA 4X

A wide range of screw fixing pistol grip handles are available with the maximum degree of protection on the market.

> ul508a

In compliance with UL508A standards, which require internal panel inspection by authorized personnel with power applied, pistol handles are available with defeatable feature of the door coupling when the switch disconnector or the changeover switch is closed, i.e. in ON position.

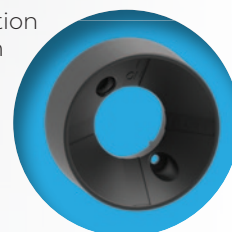


> Padlockable

All direct and door coupling handles are equipped with integrated padlock mechanism.

> Shaft alignment ring

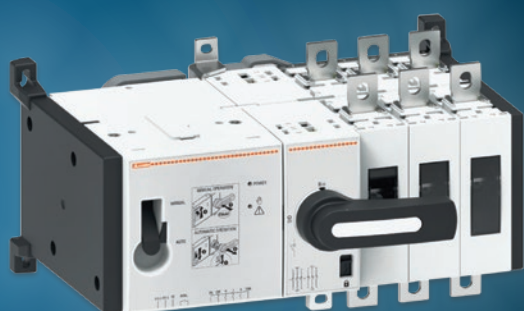
To facilitate the insertion of the shaft extension in the door coupling handle, the alignment ring can be mounted.



MOTORISED CHANGEOVER SWITCHES

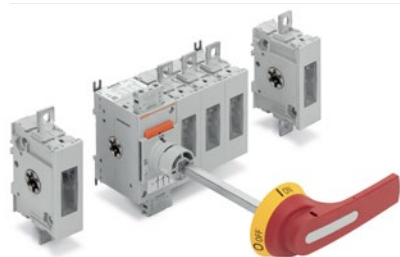
Available in three or four-pole versions with current ratings from 125A to 315A, these switches offer two motor command modes: impulse and contactor logic.

Additional functionality can be added through the integrated expansion slot, enabling features such as relay outputs or a Modbus-RTU RS485 communication port.





Switch disconnectors



GL0315C1



GL1000C1



GLX61B



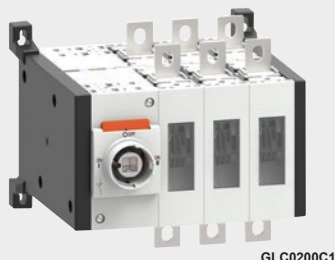
GLX61D



GLX550

type	AC-23A ≤ 400V	AC-23A ≤ 415V	poles	description	dimensions (mm) (H) (W) (D)		
GL series - Three-pole load-break switches				160A - 1000A			
• Door interlocking handle and shaft <i>(to be ordered separately)</i>							
Three-pole 160A - 315A							
GL0160C1	160A	90 kW	3-pole	Isolator/load-break switch	155	162	91
GL0200C1	200A	110 kW	3-pole	Isolator/load-break switch	155	162	91
GL0250C1	250A	140 kW	3-pole	Isolator/load-break switch	155	162	91
GL0315C1	315A	160 kW	3-pole	Isolator/load-break switch	155	162	91
Three-pole 400A - 1000A							
GL0400C1	400A	200 kW	3-pole	Isolator/load-break switch	188	204	112
GL0500C1	500A	250 kW	3-pole	Isolator/load-break switch	188	204	112
GL0630C1	630A	355 kW	3-pole	Isolator/load-break switch	260	231	112
GL0800C1	800A	450 kW	3-pole	Isolator/load-break switch	250	284	148
GL1000C1	1000A	560 kW	3-pole	Isolator/load-break switch	388	314	148
Attachable 4th pole <i>(for above 3-pole switches)</i>							
GLX420315	315A	—	1-pole	attachable 4th pole for switches	GL0160...315C1		
GLX420400	400A	—	1-pole	attachable 4th pole for switches	GL0400C1		
GLX420630	630A	—	1-pole	attachable 4th pole for switches	GL0500...630C1		
GLX420800	800A	—	1-pole	attachable 4th pole for switches	GL0800C1		
GLX421000	1000A	—	1-pole	attachable 4th pole for switches	GL1000C1		
Handles <i>(external front operation)</i>				IP65			
• External door interlocking handles padlockable <i>(3 padlocks)</i> in "OFF" position							
GLX61	red/yellow			door interlocking pistol grip handle <i>(125 mm)</i>	GL0160...315C1		
GLX61B	black			door interlocking pistol grip handle <i>(125 mm)</i>	GL0160...315C1		
GLX62	red/yellow			door interlocking pistol grip handle <i>(175 mm)</i>	GL0400...630C1		
GLX62B	black			door interlocking pistol grip handle <i>(175 mm)</i>	GL0400...630C1		
GLX63	red/yellow			door interlocking pistol grip handle <i>(175 mm)</i>	GL0800...1000C1		
GLX63B	black			door interlocking pistol grip handle <i>(175 mm)</i>	GL0800...1000C1		
GLX00	—			shaft alignment ring for pistol grip handles	GLX61...3/B		
Extension shafts <i>(for above handles)</i>							
GLX7200S10	200 mm	□ 10 mm ²		extension shaft for handles	GLX61...2/B		
GLX7300S10	300 mm	□ 10 mm ²		extension shaft for handles	GLX61...2/B		
GLX7400S10	400 mm	□ 10 mm ²		extension shaft for handles	GLX61...2/B		
GLX7500S10	500 mm	□ 10 mm ²		extension shaft for handles	GLX61...2/B		
GLX7200S12	200 mm	□ 12 mm ²		extension shaft for handles	GLX63/B		
GLX7300S12	300 mm	□ 12 mm ²		extension shaft for handles	GLX63/B		
GLX7400S12	400 mm	□ 12 mm ²		extension shaft for handles	GLX63/B		
GLX7500S12	500 mm	□ 12 mm ²		extension shaft for handles	GLX63/B		
Handles <i>(direct switch mounted)</i>							
GLX61DB	black			direct switch mount internal handle	GL0160...315C1		
GLX61D	red/yellow			direct switch mount internal handle	GL0160...315C1		
GLX62DB	black			direct switch mount internal handle	GL0400...630C1		
GLX63DB	black			direct switch mount internal handle	GL0800...1000C1		
Auxiliary contact blocks <i>(1th 10A)</i>							
• Snap-on auxiliary contact blocks mounted on the main switching actuator							
GLX1010EA	1NO	auxiliary		contact for GL switches <i>(early break)</i>	GL0160...1000C1		
GLX1001	1NC	auxiliary		contact block for GL switches	GL0160...1000C1		
Terminal shrouds for switches				160 - 1000A			
GLX800	1-pole	terminal		protection shr oud <i>(set of 3 pcs)</i>	GL0160...315C1		
GLX802	1-pole	terminal		protection shroud <i>(set of 3 pcs)</i>	GL0400...630C1		
GLX804	1-pole	terminal		protection shroud <i>(set of 3 pcs)</i>	GL0800...1000C1		
Phase barriers				<i>(required for voltage > 500V)</i>			
GLX900	3-pole	barrier		phase barrier <i>(set of 6 pcs)</i>	GL0160...315C1		
GLX902	3-pole	barrier		phase barrier <i>(set of 6 pcs)</i>	GL0400...630C1		
GLX904	3-pole	barrier		phase barrier <i>(set of 6 pcs)</i>	GL0800C1		
Captive nuts							
GLX550	1 terminal			captive nuts for switch terminals <i>(set of 8 pcs)</i>	GL0160...315C1		
GLX551	1 terminal			captive nuts for switch terminals <i>(set of 8 pcs)</i>	GL0400...630C1		
GLX552	1 terminal			captive nuts for switch terminals <i>(set of 8 pcs)</i>	GL0800C1		
GLX553	1 terminal			captive nuts for switch terminals <i>(set of 8 pcs)</i>	GL01000C1		

NEW



GLC0200C1



GLX00



GLX61DB



GLX201

type	AC-21A ≤ 690V	AC-23A ≤ 415V	poles	description	dimensions (mm)		
					(H)	(W)	(D)

GLC series - Changeover switches

IEC/EN, 60947-6-1

- Operating handle and shaft (*to be ordered separately*)

Three-pole 160A - 1000A

GLC0160C1	160A	90 kW	3-pole	changeover switch	141	186	192
GLC0200C1	200A	110 kW	3-pole	changeover switch	141	186	192
GLC0250C1	250A	140 kW	3-pole	changeover switch	141	186	192
GLC0315C1	315A	160 kW	3-pole	changeover switch	141	186	192
GLC0400C1	400A	200 kW	3-pole	changeover switch	159	237	231
GLC0500C1	500A	250 kW	3-pole	changeover switch	159	237	231
GLC0630C1	630A	355 kW	3-pole	changeover switch	260	264	231
GLC0800C1	800A	450 kW	3-pole	changeover switch	200	340	326
GLC1000C1	1000A	560 kW	3-pole	changeover switch	388	370	326

Four-pole 160A - 1000A

GLC0160T4C1	160A	90 kW	4-pole	changeover switch	141	221	192
GLC0200T4C1	200A	110 kW	4-pole	changeover switch	141	221	192
GLC0250T4C1	250A	140 kW	4-pole	changeover switch	141	221	192
GLC0315T4C1	315A	160 kW	4-pole	changeover switch	141	221	192
GLC0400T4C1	400A	200 kW	4-pole	changeover switch	159	282	231
GLC0500T4C1	500A	250 kW	4-pole	changeover switch	159	282	231
GLC0630T4C1	630A	355 kW	4-pole	changeover switch	260	318	231
GLC0800T4C1	800A	450 kW	4-pole	changeover switch	200	405	326
GLC1000T4C1	1000A	560 kW	4-pole	changeover switch	388	445	326

Accessories for above GL changeover switches
Handles for changeover switches (external front operation)

IP65

- External door interlocking handles padlockable (*3 padlocks*) in "OFF" position

GAX67B	black	I-O-II	door interlocking handle 65 mm ²	(screw fixing)	GA025...160ET6
GLX61CB	black	I-O-II	door interlocking pistol grip handle	(125 mm)	GLC0200...315C1
GLX62CB	black	I-O-II	door interlocking pistol grip handle	(175 mm)	GLC0400...630C1
GLX63CB	black	I-O-II	door interlocking pistol grip handle	(175 mm)	GLC0800...1000C1
GLX00	black		shaft alignment ring for all above handles		GLX61...3CB

For extension shafts see **B-5**
Direct switch-mounted handles for changeover switches

GLX61DB	black	I-O-II	direct switch mount internal handle	GLC160...315C1
GLX62DB	black	I-O-II	direct switch mount internal handle	GLC0400...630C1
GLX63DB	black	I-O-II	direct switch mount internal handle	GLC0800...1000C1

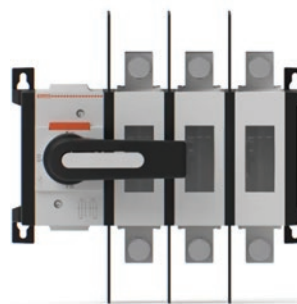
Bridging bars for changeover switches

GLX201	3-pole	bridge bars	terminal bridging bars	(set of 3 pcs)	GLC160...315C1
GLX206	3-pole	bridge bars	terminal bridging bars	(set of 3 pcs)	GLC0400...630C1
GLX208	3-pole	bridge bars	terminal bridging bars	(set of 3 pcs)	GLC0800...1000C1
GLX202	4-pole	bridge bars	terminal bridging bars	(set of 4 pcs)	GLC160...315C1
GLX207	4-pole	bridge bars	terminal bridging bars	(set of 4 pcs)	GLC0400...630C1
GLX209	4-pole	bridge bars	terminal bridging bars	(set of 4 pcs)	GLC0800...1000C1

Switch **Disconnectors** and **Changeover** Switches

SWITCH DISCONNECTORS

- Compact dimensions
- Four-pole version with the optional **fourth-pole add-on**
- From **160A to 630A** AC23
- **100A, 200A, 400A, 600A and 800A** UL98 listed versions


MANUAL CHANGEOVER SWITCHES

- Compact dimensions
- **Three-pole and four-pole** versions already assembled
- From **160A to 1000A** AC23
- **100A, 200A and 400A** UL1008 listed versions

Scan here



Technical documents


Scan to view
selection guide

NEW



GLCMB0250D024



GLCMB0250T4D024

Motorised changeover switches

Lovato Electric's compact, efficient and reliable motorised changeover switches ensure uninterrupted power and safe transitions between sources such as the mains and backup generators – ideal for demanding commercial and industrial applications.

GLCM changeover switches offer two operating modes: impulse logic, which moves the switch to the selected position after a control pulse, and contactor logic, which keeps the switch in position while the command is active, returning to "0" when the command is removed (with auxiliary power).

Users can choose between impulse or contactor logic for quick or continuous control flexibility, while the built-in expansion slot allows for easy system upgrades with additional relay outputs or a Modbus-RTU RS485 communication port.

- Uninterrupted operations:** Maintain business continuity by automatically or manually switching to an alternate power source
- Safety first:** Prevent electrical back-feeding and reduce risks during maintenance or emergencies
- Operational Efficiency:** Quickly restore power and minimise downtime

General features:

- Current ratings from 125A to 315A AC23A
- Screw fixing on plate for robust installation
- Open transition (I – 0 – II positions) ensuring clear and safe position changes
- Electrically or manually operated, giving flexibility in control
- Fully compliant with **IEC/EN/BS 60947-6-1** and **IEC/EN/BS 60947-3**

type	AC-21A ≤ 690V	AC-23A ≤ 500V	poles	description	dimensions (mm)		
					(H)	(W)	(D)

GLC series - Three pole changeover switches 160A - 315A

24 VDC power supply

GLCMB0160D024	160A	160A	3-pole	isolator/load-break switch	141	186	213
GLCMB0200D024	200A	200A	3-pole	isolator/load-break switch	141	186	213
GLCMB0250D024	250A	250A	3-pole	isolator/load-break switch	141	186	213
GLCMB0315D024	315A	250A	3-pole	isolator/load-break switch	188	237	256

230 VAC power supply

GLCMB0160A230	160A	160A	3-pole	isolator/load-break switch	141	186	213
GLCMB0200A230	200A	200A	3-pole	isolator/load-break switch	141	186	213
GLCMB0250A230	250A	250A	3-pole	isolator/load-break switch	141	186	213
GLCMB0315A230	315A	250A	3-pole	isolator/load-break switch	188	237	256

GLC series - Four pole changeover switches 160A - 315A

24 VDC power supply

GLCMB0160T4D024	160A	160A	4-pole	isolator/load-break switch	141	186	213
GLCMB0200T4D024	200A	200A	4-pole	isolator/load-break switch	141	186	213
GLCMB0250T4D024	250A	250A	4-pole	isolator/load-break switch	141	186	213
GLCMB0315T4D024	315A	250A	4-pole	isolator/load-break switch	188	237	256

230 VAC power supply

GLCMB0160T4A230	160A	160A	4-pole	isolator/load-break switch	141	186	213
GLCMB0200T4A230	200A	200A	4-pole	isolator/load-break switch	141	186	213
GLCMB0250T4A230	250A	250A	4-pole	isolator/load-break switch	141	186	213
GLCMB0315T4A230	315A	250A	4-pole	isolator/load-break switch	188	237	256

→ **GLCM motorised changeover** - Ideal for pairing with **ATL / RGK** series



GLCM

Optional **RS485** port enables simplified wiring, faster setup, and real-time monitoring. For example, when the GLCM series is paired with **ATL** or **RGK** controllers, status and alarms can be viewed directly on the controller display.



GAZ025



GAZM016EM



GLZM160EM



GAX42063SA

Enclosed Isolators

GA series enclosed switch disconnectors are supplied in robust, heavy-duty enclosures in an IP65 execution. The enclosures incorporate a red/yellow operating handle mechanically interlocked with cover in the "ON" position and padlockable (3 padlocks) in the "OFF" position.

General features:

- Padlockable handles (3 padlocks) in OFF position
- Red/Yellow handle, interlocked with front cover in ON position
- Available in plastic (ABS), metal (*sheet metal*) and stainless steel

type	AC-21A ≤ 690V	AC-23A ≤ 415V	poles	description	dimensions (mm)		
					(H)	(W)	(D)

Plastic ABS enclosed isolators

IP65

GAZ series 16 - 160A

GAZ016	16A	7.5 kW	3-pole	enclosed load-break switch	160	100	120
GAZ025	25A	11.0 kW	3-pole	enclosed load-break switch	160	100	120
GAZ032	32A	15.0 kW	3-pole	enclosed load-break switch	160	100	120
GAZ040	40A	18.5 kW	3-pole	enclosed load-break switch	160	100	120
GAZ063	63A	22.0 kW	3-pole	enclosed load-break switch	160	100	120
GAZ080	80A	45.0 kW	3-pole	enclosed load-break switch	210	175	122
GAZ125	125A	55.0 kW	3-pole	enclosed load-break switch	210	175	122
GAZ160	160A	55.0 kW	3-pole	enclosed load-break switch	210	175	122

Attachable 4th pole to the above switches (see below)

Empty ABS plastic enclosures only (with red/yellow handle and extension shaft)

GAZ1	enclosure - supplied with handle and shaft			160	100	97
GAZ2	enclosure - supplied with handle and shaft			210	175	99
GAZ3	enclosure - supplied with handle and shaft			280	220	170

Metal enclosed isolators

IP65

GAZM series 16 - 160A

GAZM016	16A	7.5 kW	3-pole	enclosed load-break switch	200	150	120
GAZM025	25A	11.0 kW	3-pole	enclosed load-break switch	200	150	120
GAZM032	32A	15.0 kW	3-pole	enclosed load-break switch	200	150	120
GAZM040	40A	18.5 kW	3-pole	enclosed load-break switch	200	150	120
GAZM063	63A	22.0 kW	3-pole	enclosed load-break switch	200	150	120
GAZM080	80A	45.0 kW	3-pole	enclosed load-break switch	200	150	120
GAZM125	125A	55.0 kW	3-pole	enclosed load-break switch	300	200	120
GAZM160	160A	55.0 kW	3-pole	enclosed load-break switch	300	200	120

GLZ series 200 - 1000A

GLZM0200	200A	110 kW	3-pole	enclosed load-break switch	400	300	220
GLZM0250	250A	132 kW	3-pole	enclosed load-break switch	400	300	220
GLZM0315	315A	140 kW	3-pole	enclosed load-break switch	400	300	220

Add attachable 4th pole to the above switches

Accessories for above switches

Attachable 4th pole for above switches

GAX42040A	40A	18.5 kW	attachable 4th pole for above switches	GAZ/M016...40
GAX42063SA	63A	22.0 kW	attachable 4th pole for above switches	GAZ/M063
GAX42125A	125A	55.0 kW	attachable 4th pole for above switches	GAZ/M080...125
GAX42160A	160A	55.0 kW	attachable 4th pole for above switches	GAZ/M160
GAX41040A	40A	18.5 kW	early-make attachment for switches	GAZ/M016...40
GAX41125A	125A	55.0 kW	early-make attachment for switches	GAZ/M080...125
GLX420315	315A	132 kW	attachable 4th pole for above switches	GLZM0200...315

Metal enclosure - Selection chart

	METAL ENCLOSED VERSION WITH RED/YELLOW OR BLACK HANDLE												
	16A	25A	32A	40A	63A	80A	100A	125A	160A	160A	200A	250A	315A
SWITCH DISCONNECTORS													
Dimensions (LxHxD) mm	200x150x120							300x200x120		400x300x250			
Three-pole IEC/EN	●	●	●	●	●	●	●	●	●	●	●	●	●
Four-pole IEC/EN	●		●	●	●		●	●	●				
4th pole - simultaneous closing										●	●	●	●



Earth leakage relays

Earth leakage relays

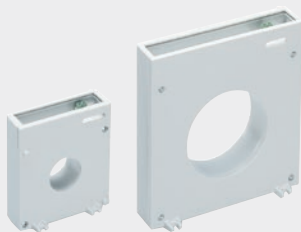
Lovato offers a complete range of devices for reliable equipment protection in industrial applications, including panel-mounted relays with configurable tripping thresholds, automatic or manual reset, and compatibility with toroidal current transformers, as well as integrated relay-transformer units for simplified installation. All models comply with IEC/EN 60947-2 standards for dependable performance.

General features:

LED indication (Green – Power "ON") (Red – TRIP)
 Front "TEST" and "RESET" buttons
 Configurable automatic or manual reset
 Configurable tripping set-point ($I_{\Delta n}$): 0.025 - 0.25A / 0.25 - 2.5A / 2.5 - 25A
 Configurable tripping time delay (t): 0.02 - 0.5s / 0.2 - 5s
 Reference standards: IEC/EN 60947-2



R4D 415



31RT...



31RC80 415

type	supply voltage	relays	description
------	----------------	--------	-------------

Panel mount earth leakage relays - (96 x 96 mm)

Require toroidal current transformers (*listed below*)

R1D 1 operational threshold

R1D415	110 - 240 - 415V	1	earth leakage 1 operational threshold
---------------	------------------	---	---------------------------------------

R2D 2 operational thresholds

- Configurable for 2 tripping or 1 + alarm)

R2D415	110 - 240 - 415V	2	earth leakage 2 operational threshold
---------------	------------------	---	---------------------------------------

R4D 2 operational thresholds

- Flag indicator "trip memory"
- Digital fault current measurement and display with configurable tripping value
- Configurable for 2 tripping or 1 + alarm)

R4D415	110 - 240 - 415V	2	earth leakage 2 operational threshold
---------------	------------------	---	---------------------------------------

Toroidal current transformers for above earth leakage relays

type	supply voltage	hole size	description
------	----------------	-----------	-------------

toroidal transformer

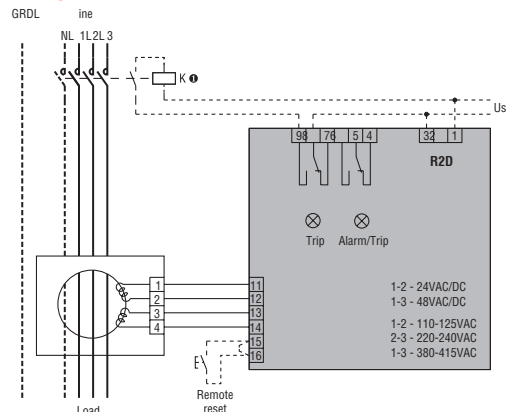
31RT35	toroid	35 mm	toroidal transformer for above relays
31RT60	toroid	60 mm	toroidal transformer for above relays
31RT80	toroid	80 mm	toroidal transformer for above relays
31RT110	toroid	110 mm	toroidal transformer for above relays
31RTA110	toroid	110 mm	split-core toroidal transformers

Earth leakage relay incorporating toroidal transformer

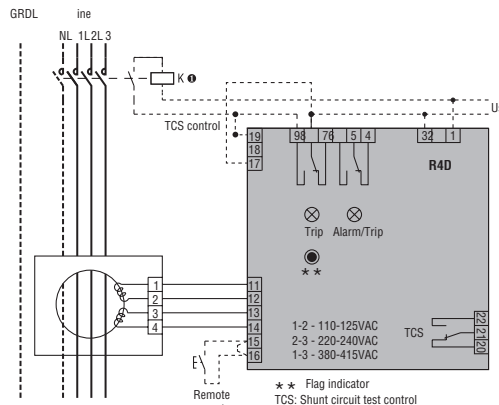
31RC3548	24 - 48 VAC/DC	35 mm	earth leakage and toroidal combinations
31RC35415	110 - 240 - 415V	35 mm	earth leakage and toroidal combinations
31RC6048	24 - 48 VAC/DC	60 mm	earth leakage and toroidal combinations
31RC60415	110 - 240 - 415V	60 mm	earth leakage and toroidal combinations
31RC8048	24 - 48 VAC/DC	80 mm	earth leakage and toroidal combinations
31RC11048	24 - 48 VAC/DC	110 mm	earth leakage and toroidal combinations
31RC110415	110-240-415V	110 mm	earth leakage and toroidal combinations

Earth leakage - Wiring diagram

R2D415



R4D415





Automation for a Changing World

Basic Compact Drive ME300 Series

Compact and Intelligent

- Built-in EMC filter
- Open loop control for IM and PM motors
- Compact design; power range up to 7.5kW
- STO (Safe Torque Off) SIL2 (optional model)
- Supports PWM/pulse input for frequency setting
- Built-in PID control for single and multi-pumps





Industrial Power Supplies

Delta, the world's leading power supply manufacturer, delivers cutting-edge solutions engineered for the most demanding industrial environments. Built with rugged, compact enclosures, Delta power supplies are designed to withstand harsh conditions while maintaining consistent performance.

With industry-leading efficiency levels, they reduce energy consumption and heat generation, ensuring both cost savings and extended system life

Product features:

- DIN-rail mounting (*RoHS compliant*)
- Wide input voltage range covering 85 - 264 VAC (*1-phase*) & 320 - 575 VAC (*3-phase*) models
- Provides overload, overvoltage and thermal protection
- Power boost - (*enables reserve power for reliable start-up of loads with high inrush currents*)
- Conforms to harmonic current IEC/EN 61000-3-2, Class A
- Certifications: UL508, IEC/EN 62368-1, cULus, EN 60204, GS, CCS Aus

type	input voltage	output voltage (adj)	rated load		housing	dimensions (mm)		
			(W)	(A)		(H)	(W)	(D)

LYTE II series DIN-rail mounting, ultra slim power supplies for general applications.

- Universal input range: 85...264 VAC
- Efficiency: Up to 90% (at 230 VAC)
- Operating temperature: -20°C to +70°C
- Includes built-in constant current circuit for reactive loads

Single-phase 85~264 VAC 24 VDC output

DRL-12V75W1AZ	85 - 264 VAC	12 VDC	75	6.3	plastic	124	27	102
DRL-12V120W1EN	85 - 264 VAC	12 VDC	120	10.0	aluminium	124	30	117
DRL-12V240W1EN	85 - 264 VAC	12 VDC	240	20.0	aluminium	124	40	117
DRL-24V75W1AZ	85 - 264 VAC	24 VDC	75	3.1	plastic	124	27	102
DRL-24V120W1EN	85 - 264 VAC	24 VDC	120	5.0	aluminium	124	30	117
DRL-24V240W1EN	85 - 264 VAC	24 VDC	240	10.0	aluminium	124	40	117
DRL-24V480W1EN	85 - 264 VAC	24 VDC	480	20.0	aluminium	124	56	117
DRL-48V75W1AZ	85 - 264 VAC	48 VDC	75	1.6	plastic	124	27	102
DRL-48V120W1EN	85 - 264 VAC	48 VDC	120	2.5	aluminium	124	30	117
DRL-48V240W1EN	85 - 264 VAC	48 VDC	240	5.0	aluminium	124	40	117

CLiQ II series DIN rail mounting, high specification series

- High efficiency - up to 92.0% at 230 VAC
- Power Boost of 150% for 5 seconds (*480W: 200% for 2 seconds*)

Single-phase 85 - 264 VAC 24 VDC output

DRP024V060W1BA	85 - 264 VAC	24 VDC (adj)	60	2.5	aluminium	121	32	125
----------------	--------------	--------------	----	-----	-----------	-----	----	-----

Three-phase Input voltage range: 3 × 320 - 600 VAC / 450 - 800 VDC

DRP024V060W3BN	320 - 600 VAC	24 VDC	60	2.5	aluminium	121	50	118
DRP024V120W3BN	320 - 600 VAC	24 VDC	120	5.0	aluminium	121	50	118
DRP024V240W3BN	320 - 600 VAC	24 VDC	240	10.0	aluminium	121	70	118
DRP024V480W3BN	320 - 600 VAC	24 VDC	480	20.0	aluminium	121	140	118
DRP024V960W3BN	320 - 600 VAC	24 VDC	960	40.0	aluminium	121	255	118

FORCE-GT series DIN-rail mounting, high specification series power supplies

- High efficiency: Up to 95% (at 230 VAC)
- Operating temp: -30°C to +70°C
- Ultra-Slim design
- Includes built-in "DC OK" relay and LED indicator
- Full-load operating temperature up to 60°C
- Includes built-in constant current circuit for charging applications
- Conformal coating on PCBAs protect against chemical and dust pollutants

Single-phase Input voltage range: 90 - 264 VAC

DRF-12V120W1GBA	85 - 264 VAC	12 VDC	120	10.0	aluminium	124	30	117
DRF-24V120W1GBA	85 - 264 VAC	24 VDC	120	5.0	aluminium	124	30	117
DRF-24V240W1GBA	85 - 264 VAC	24 VDC	240	10.0	aluminium	124	40	117
DRF-24V480W1GBA	85 - 264 VAC	24 VDC	480	20.0	aluminium	124	56	117

Three-phase Input voltage range: 3 × 320 - 575 VAC

DRF-24V120W3GBA	320 - 575 VAC	24 VDC	120	5.0	aluminium	124	38	126
DRF-24V240W3GBA	320 - 575 VAC	24 VDC	240	10.0	aluminium	124	50	126
DRF-24V480W3GBA	320 - 575 VAC	24 VDC	480	20.0	aluminium	124	65	128
DRF-24V960W3GBA	320 - 575 VAC	24 VDC	960	40.0	aluminium	124	110	128



DRC-24V100W1RZ



DRR-20N



DRU-24V40ABN

CHROME II series

The Chrome II series is designed for compact industrial and household applications.

- Safety approval: IEC/EN/UL 60950-1 (*ITE standard*) and UL 508 (*industrial standard*)
- Household appliance approval: IEC/EN 60335-1, IEC/EN 61558-1/-2-16

type	input voltage	output voltage (adj)	rated load		housing	dimensions (mm)		
			(W)	(A)		(H)	(W)	(D)

CHROME II series DIN-rail mounting, modular, Class II

Single-phase		Input voltage range: 85 - 264 VAC						
DRC-05V015W1RZ	85 - 264 VAC	5 VDC (adj)	12	2.40	plastic	87	18	55
DRC-05V030W1RZ	85 - 264 VAC	5 VDC (adj)	15	3.0	plastic	87	35	55
DRC-12V015W1RZ	85 - 264 VAC	12 VDC (adj)	15	1.25	plastic	87	18	55
DRC-12V030W1RZ	85 - 264 VAC	12 VDC (adj)	24	2.00	plastic	91	53	56
DRC-12V060W1RZ	85 - 264 VAC	12 VDC (adj)	54	4.50	plastic	91	71	56
DRC-12V100W1RZ	85 - 264 VAC	12 VDC (adj)	85.2	7.1	plastic	87	70	55
DRC-24V010W1RZ	85 - 264 VAC	24 VDC (adj)	36	0.42	plastic	87	18	55
DRC-24V015W1RZ	85 - 264 VAC	24 VDC (adj)	15	0.63	plastic	87	18	55
DRC-24V030W1RZ	85 - 264 VAC	24 VDC (adj)	36	1.5	plastic	87	35	55
DRC-24V060W1RZ	85 - 264 VAC	24 VDC (adj)	60	2.50	plastic	87	53	55
DRC-24V100W1RZ	85 - 264 VAC	24 VDC (adj)	91.2	3.83	plastic	87	70	55
DRC-48V060W1RZ	85 - 264 VAC	48 VDC (adj)	60	1.25	plastic	87	53	55
DRC-48V100W1RZ	85 - 264 VAC	48 VDC (adj)	92.1	1.92	plastic	87	70	55

Complementary modules - DIN-rail mounting

Redundancy modules provide additional protection against potential failure of the 24 VDC supply. Two power supplies are decoupled via a redundancy module which continually monitors the feeding power supply units and when one unit fails, automatically switches to the other.

- Includes built-in 2 channel DC OK signal and alarm relay contact

Redundancy module		built-in 2 channel DC OK signal and alarm relay contact						
DRR-20N	22 - 60 VDC	22 - 60 VDC	—	20A	aluminium	121	50	122
DRR-40N	22 - 60 VDC	22 - 60 VDC	—	40A	aluminium	121	50	122

Buffer module		for protection against short power failures						
---------------	--	---------------------------------------------	--	--	--	--	--	--

Allows a system to continue operating during power disruptions lasting from milliseconds to seconds.

- Buffering time 250ms to 10s (*depending on load current*)
- Supports parallel connection to extended buffering time

DRB-24V020ABN	23 - 28.8 VDC	24 VDC	—	20A	aluminium	121	50	120
---------------	---------------	--------	---	-----	-----------	-----	----	-----

DC - UPS solutions

- **Zero switchover** time from loss of DC input to battery operation
- Built-in diagnostic monitoring for DC OK, discharge and battery fail by relay contacts
- LED indicator: DC OK, Battery Charging, Battery Discharging, Battery Fail and Battery Reverse Polarity

Modular DC - UPS module (<i>without battery</i>)		suitable for 24V system up to 40A						
DRU-24V40ABN	DC-UPS	23 - 28 VDC	960	40A	aluminium	121	50	118

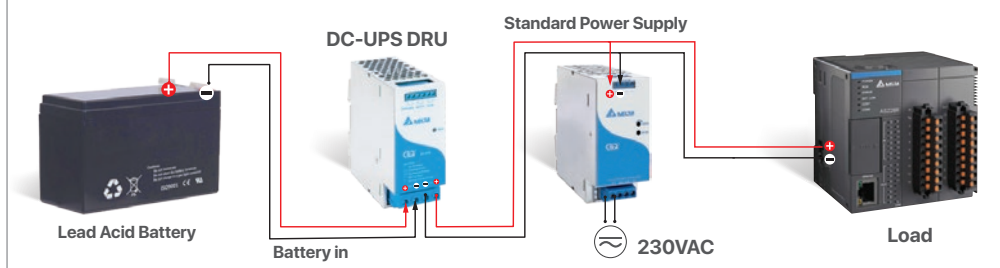
Modular DC - UPS module

DC-UPS module in a modular DIN-rail mounting format, occupy the same profile as standard miniature circuit breakers (MCBs), suited for mounting into distribution boards with a 45 mm frontal cutout.

DRU-24V10ACZ	DC-UPS	23 - 28 VDC	240	10A	plastic	91	71	56
--------------	--------	-------------	-----	-----	---------	----	----	----

Delta 24V DC power supply - Backup solution

- The Delta DRU UPS seamlessly integrates with a 24V DC power supply setup to ensure continuous operation during AC source interruptions or failures.



World Class Innovation, Local Commitment

PERTH

14 Lorries Court
Malaga, 6090
P: (08) 9248 0410

MELBOURNE

21 Kimberly Road,
Dandenong South, 3175
P: (03) 9706 4599

BRISBANE

U6, 57 Mortimer Road,
Acacia Ridge, 4110
P: (07) 3274 3327

SYDNEY

2 Squill place,
Blacktown, 2148
P: (02) 9676 1671

ADELAIDE

72 Wingfield Road,
Wingfield, 5013
P: (08) 8347 2499



Discover More

Free Call: 1800 252 995

www.mechtric.com.au