

MECHTRIC



Control & Signalling

Control & Signalling: Powered by Mechtrix's Expertise and Global Partnerships

With over 60 years of industry experience, Mechtrix proudly partners with world-class manufacturers to deliver innovative solutions.

Mechtrix's **Control and Signalling** solutions include pushbuttons, selector switches, pilot lights, cam switches, and limit switches for reliable machine operation and monitoring. Industrial warning devices such as beacons, signal towers, and sirens ensure clear visual and audible alerts across a wide range of environments. For hazardous areas, EX-rated solutions provide robust safety and compliance. Together, these solutions deliver dependable control, visibility, and protection for industrial applications.







Through these partnerships, Mechtrix delivers high-quality products, competitive pricing, and unparalleled technical support, empowering your business to perform at its best.








Control & Signalling

Control & Signalling Devices

Pushbuttons & selector switches		Lovato	D-1...10
Pushbutton control stations		Lovato	D-11
Rotary cam switches		Lovato	D-12
Pilot lights		Lovato Mechtric Sirena	D-2/9 D-13...14 D-19
Pendant control stations		ravioli	D-15
Wormgear limit switches		ravioli	D-16

Industrial Warning Devices

Signalling devices		Sirena	D-17...37
Signal towers/ Stack lights		Sirena	D-23...24
Sirens & Alarm bells		Sirena	D-25...26 / D36
Manual call points		Mechtric	D-36
Traffic lights		e2S Mechtric	D-30 D-39

Industrial Warning Devices (EX rated)

Aluminium product solutions		e2S	D-41
Glass Reinforced Polyester product (GRP) solutions		e2S	D-42
Stainless Steel product solutions		e2S	D-43
Manual call points		e2S	D-44



Pushbuttons & selector switches

PLatinum SERIES



LPC B103



LPC B204



LPC B2104



LPC B6144



LPC B6644



LPC B6844



LPC B7191



LPC B7223



LPC B7355

Platinum series Ø22 mm pushbuttons and selector switches

LPC series (chromed plastic) - mounting by threaded ring

- Elegant style ergonomic design (combining aesthetics with industrial durability)
- IP66, IP67 and IP69K degree of protection for use even in extreme temperatures -25°C...+70°C
- Contact blocks and **LPX AU120** support (see control device accessories)

Actuators supplied without **LPX AU120** contact block support (to be ordered separately)

type	colour	symbol	description	action
------	--------	--------	-------------	--------

Ø22 mm pushbuttons and selector switches

Pushbutton actuators

LPC B102	black	—	flush momentary pushbutton actuator	spring return
LPC B103	green	—	flush momentary pushbutton actuator	spring return
LPC B104	red	—	flush momentary pushbutton actuator	spring return
LPC B105	yellow	—	flush momentary pushbutton actuator	spring return
LPC B106	blue	—	flush momentary pushbutton actuator	spring return
LPC B108	white	—	flush momentary pushbutton actuator	spring return
LPC B202	black	—	projecting head pushbutton actuator	spring return
LPC B203	green	—	projecting head pushbutton actuator	spring return
LPC B204	red	—	projecting head pushbutton actuator	spring return
LPC B205	yellow	—	projecting head pushbutton actuator	spring return
LPC B206	blue	—	projecting head pushbutton actuator	spring return
LPC B208	white	—	projecting head pushbutton actuator	spring return

Pushbutton actuators (with symbols on button)

LPC B1104	red	O	flush momentary pushbutton actuator	spring return
LPC B1113	green	I	flush momentary pushbutton actuator	spring return
LPC B1134	red	STOP	flush momentary pushbutton actuator	spring return
LPC B1163	green	START	flush momentary pushbutton actuator	spring return
LPC B1142	black		flush momentary pushbutton actuator	spring return
LPC B1152	black		flush momentary pushbutton actuator	spring return
LPC B1158	white		flush momentary pushbutton actuator	spring return
LPC B1196	blue	RESET	flush momentary pushbutton actuator	spring return
LPC B2104	red	O	extended head pushbutton actuator	spring return

Alternate action pushbutton actuator (push-on / push-off)

LPC Q102	black	—	flush alternate action p/button actuator	alternate
LPC Q103	green	—	flush alternate action p/button actuator	alternate
LPC Q104	red	—	flush alternate action p/button actuator	alternate
LPC Q105	yellow	—	flush alternate action p/button actuator	alternate
LPC Q106	blue	—	flush alternate action p/button actuator	alternate
LPC Q202	black	—	projecting head pushbutton actuator	alternate
LPC Q203	green	—	projecting head pushbutton actuator	alternate
LPC Q204	red	—	projecting head pushbutton actuator	alternate
LPC Q205	yellow	—	projecting head pushbutton actuator	alternate
LPC Q206	blue	—	projecting head pushbutton actuator	alternate

Use only contact blocks **LPX C10A** (NO) and **LPX C01** (NC) on above alternate action pushbuttons.

Mushroom head pushbutton actuators

LPC B6144	red	Ø40 mm	mushroom pushbutton actuator	spring return
LPC B6164	red	Ø60 mm	mushroom pushbutton actuator	spring return
LPC B6344	red	Ø40 mm	latching mushroom pushbutton actuator	twist release

Emergency stopping (ISO 13850 compliant / IEC/EN/60974/5/5)

LPC B6634	red	Ø30 mm	latching mushroom pushbutton actuator	twist release
LPC B6644	red	Ø40 mm	latching mushroom pushbutton actuator	twist release
LPC B6744	red	Ø40 mm	latching mushroom pushbutton actuator	pull release
LPC B6844	red	Ø40 mm	latching mushroom pushbutton actuator	key release

Multi pushbutton actuators

Double-touch pushbutton actuators

LPC B7113	grn/red	—	double touch pushbutton actuator (flush)	spring return
LPC B7191	blk/blk	—	double touch pushbutton actuator (flush)	spring return
LPC B71S02	grn/grn	+ —	double touch pushbutton actuator (flush)	spring return
LPC B7223	grn/red	I-O	double touch actuator (ext. red button)	spring return
LPC BL7223	grn/red	I-O	double touch + indicator (ext. red button)	spring return

Triple-touch pushbutton actuators (red extended stop button)

LPC B7345	grn/grn	I-STOP-II	triple-touch pushbutton actuator	spring return
LPC B7355	grn/grn	-STOP-	triple-touch pushbutton actuator	spring return
B7365	grn/grn	-STOP-	triple-touch pushbutton actuator	spring return
B7375	grn/grn	-STOP-	triple-touch pushbutton actuator	spring return

PLatinum SERIES



LPC S120



LPC S230



LPC S320



LPL 3



LPC BL103



LPC BL204



LPC BL6644

Platinum series Ø22 mm pushbuttons and selector switches

type	colour	positions		description	spring return
------	--------	-----------	--	-------------	---------------

Ø22 mm pushbuttons and selector switches

Selector switch actuators

LPC S120	black	2 position	O - I	selector switch actuator	–
LPC S121	black	2 position	O - I	selector switch actuator	from Right
LPC S130	black	3 position	I - O - II	selector switch actuator	–
LPC S131	black	3 position	I - O - II	selector switch actuator	from L+R
LPC S132	black	3 position	I - O - II	selector switch actuator	from Left
LPC S133	black	3 position	I - O - II	selector switch actuator	from Right

Long lever selector switch actuators

LPC S220	black	2 position	O - I	lever selector actuator	–
LPC S221	black	2 position	O - I	lever selector actuator	from Right
LPC S230	black	3 position	I - O - II	lever selector actuator	–
LPC S231	black	3 position	I - O - II	lever selector actuator	from L+R
LPC S232	black	3 position	I - O - II	lever selector actuator	from Left
LPC S233	black	3 position	I - O - II	lever selector actuator	from Right

Key selector switch actuators

type	colour	positions	key remove	description	spring return
LPC S320	black	2 pos (O-I)	Left	key switch actuator	–
LPC S321	black	2 pos (O-I)	L+R	key switch actuator	–
LPC S340	black	2 pos (O-I)	Left	key switch actuator	from Right
LPC S330	black	3 pos (I-O-II)	Centre	key switch actuator	–
LPC S331	black	3 pos (I-O-II)	L+C+R	key switch actuator	–
LPC S332	black	3 pos (I-O-II)	Left	key switch actuator	–
LPC S333	black	3 pos (I-O-II)	Right	key switch actuator	–
LPC S360	black	3 pos (I-O-II)	Centre	key switch actuator	from Right
LPC S370	black	3 pos (I-O-II)	Centre	key switch actuator	from L+R

Illuminated Ø22 mm control devices

Pilot light heads - Ø22 mm

LPL 3	green	illuminated		Ø22 mm pilot light head only	pilot light
LPL 4	red	illuminated		Ø22 mm pilot light head only	pilot light
LPL 5	yellow	illuminated		Ø22 mm pilot light head only	pilot light
LPL 6	blue	illuminated		Ø22 mm pilot light head only	pilot light
LPL 7	t/parent	illuminated		Ø22 mm pilot light head only	pilot light

Flush illuminated pushbutton actuators

LPC BL103	green	illuminated	flush momentary pushbutton actuator	spring return
LPC BL104	red	illuminated	flush momentary pushbutton actuator	spring return
LPC BL105	yellow	illuminated	flush momentary pushbutton actuator	spring return
LPC BL106	blue	illuminated	flush momentary pushbutton actuator	spring return

Alternate action pushbutton actuators (push-on/push-off)

LPC QL103	green	illuminated	flush alternate action p/button actuator	alternate
LPC QL104	red	illuminated	flush alternate action p/button actuator	alternate
LPC QL105	yellow	illuminated	flush alternate action p/button actuator	alternate
LPC QL106	blue	illuminated	flush alternate action p/button actuator	alternate

Extended head illuminated pushbutton actuators

LPC BL203	green	illuminated	projecting head pushbutton actuator	spring return
LPC BL204	red	illuminated	projecting head pushbutton actuator	spring return
LPC BL205	yellow	illuminated	projecting head pushbutton actuator	spring return
LPC BL206	blue	illuminated	projecting head pushbutton actuator	spring return
LPC BL207	t/parent	illuminated	projecting head pushbutton actuator	spring return

Alternate action pushbutton actuators (push-on/push-off)

LPC QL203	green	illuminated	projecting head alternate action	alternate
LPC QL204	red	illuminated	projecting head alternate action	alternate
LPC QL205	yellow	illuminated	projecting head alternate action	alternate
LPC QL206	blue	illuminated	projecting head alternate action	alternate
LPC QL207	t/parent	illuminated	projecting head alternate action	alternate

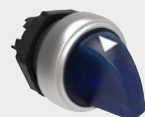
Illuminated mushroom head pushbutton actuators

LPC BL6144	red	illuminated	Ø40 mm mushroom head actuator	spring return
LPC BL6644	red	illuminated	Ø40 mm latching mushroom actuator	twist release

PLatinum SERIES



LPC SL1215



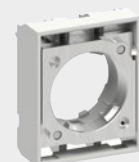
LPC SL1306



LPC R1196



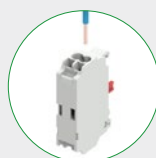
LPX DIN



LPX AU120M



LPX C10



Push-in technology



LPX CS10

Platinum LPC series (chromed plastic) illuminated Ø22 mm control devices

type	colour	positions	description	action
Illuminated selector switch actuators				
LPC SL1203	green	2 position	illuminated selector switch actuator	O - I
LPC SL1204	red	2 position	illuminated selector switch actuator	O - I
LPC SL1205	yellow	2 position	illuminated selector switch actuator	O - I
LPC SL1206	blue	2 position	illuminated selector switch actuator	O - I
LPC SL1208	white	2 position	illuminated selector switch actuator	O - I
LPC SL1213	green	2 position	illuminated selector switch actuator	spring return from Right
LPC SL1214	red	2 position	illuminated selector switch actuator	
LPC SL1215	yellow	2 position	illuminated selector switch actuator	
LPC SL1216	blue	2 position	illuminated selector switch actuator	
LPC SL1218	white	2 position	illuminated selector switch actuator	
LPC SL1303	green	3 position	illuminated selector switch actuator	I - O - II
LPC SL1304	red	3 position	illuminated selector switch actuator	I - O - II
LPC SL1305	yellow	3 position	illuminated selector switch actuator	I - O - II
LPC SL1306	blue	3 position	illuminated selector switch actuator	I - O - II
LPC SL1308	white	3 position	illuminated selector switch actuator	I - O - II
LPC SL1313	green	3 position	illuminated selector switch actuator	spring return from L+R
LPC SL1314	red	3 position	illuminated selector switch actuator	
LPC SL1315	yellow	3 position	illuminated selector switch actuator	
LPC SL1316	blue	3 position	illuminated selector switch actuator	
LPC SL1318	white	3 position	illuminated selector switch actuator	

Mechanical reset pushbuttons (fine depth adjustment through face of button)

- Complete with shaft (adjustable length 0 - 15 mm)
- Fine rod adjustment (1 - 4 mm) on front with screwdriver by removing actuator cap

LPC R1002	black	—	mechanical reset button (adj. length)	0-150 mm
LPC R1004	red	—	mechanical reset button (adj. length)	0-150 mm
LPC R1006	blue	—	mechanical reset button (adj. length)	0-150 mm
LPC R1196	blue	(RESET)	mechanical reset button (adj. length)	0-150 mm

DIN-rail mount adaptor for control devices

- To mount Ø22 mm control devices on DIN-rail.
- Same profile as standard MCBs fits into standard distribution boards with (45 mm cut-out)

LPX DIN	grey	DIN-rail	mounting adaptor for Ø22 mm pushbuttons
---------	------	----------	---

Contact blocks and accessories for LPC / LPS / LPF series

Contact block support for above series

LPX AU120	support	contact block support for LPC - chromed plastic actuators
LPX AU120M	support	contact block support for LPS and LPF - metallic actuators

Contact blocks (require LPXAU120M for metal actuators)

- Thermal current I_{th}: 10A - IEC rated insulation voltage: 690V (C20 / C02 / C11: 250V)
- Can be clipped onto the back of another contact block

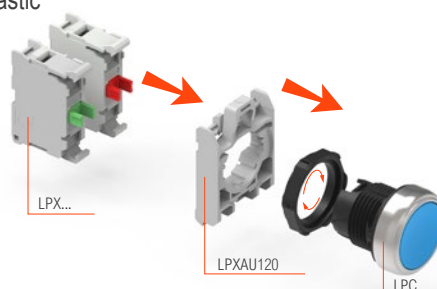
LPX C10	1 x NO	standard	screw	terminal contact block for control devices
LPX C01	1 x NC	standard	screw	terminal contact block for control devices
LPX C20	2 x NO	standard	screw	terminal contact block for control devices
LPX C02	2 x NC	standard	screw	terminal contact block for control devices
LPX C11	1NO+1NC	standard	screw	terminal contact block for control devices
LPX C10A	1 x NO	early make	screw	terminal contact block for control devices
LPX C01D	1 x NC	late break	screw	terminal contact block for control devices

Push-in terminals for cables with ferrules (no tool required for insertion)

guaranteed retaining force over time even in the presence of vibration and/or impact

LPX CS10	1 x NO	standard	push-in	terminal contact block for control devices
LPX CS01	1 x NC	standard	push-in	terminal contact block for control devices

Ø22MM - Chromed plastic



PLatinum SERIES

Platinum LPS series (metal) - mounting securely by two screws

- IP66, IP67 and IP69K degree of protection for use even in extreme temperatures -25°C - +70°C
- Supplied without **LPX AU120M** mounting adaptor/contact support (*to be ordered separately*)

type	colour	symbol	description	action
Pushbutton actuators Ø22 mm				
LPS B102	black	—	flush momentary pushbutton actuator	spring ret.
LPS B103	green	—	flush momentary pushbutton actuator	spring ret.
LPS B104	red	—	flush momentary pushbutton actuator	spring ret.
LPS B105	yellow	—	flush momentary pushbutton actuator	spring ret.
LPS B106	blue	—	flush momentary pushbutton actuator	spring ret.
LPS B108	white	—	flush momentary pushbutton actuator	spring ret.
LPS B202	black	—	projecting head pushbutton actuator	spring ret.
LPS B203	green	—	projecting head pushbutton actuator	spring ret.
LPS B204	red	—	projecting head pushbutton actuator	spring ret.
LPS B208	white	—	projecting head pushbutton actuator	spring ret.

Pushbutton actuators (with symbols on button) Ø22 mm				
LPS B1104	red	O	flush momentary pushbutton actuator	spring ret.
LPS B1113	green	I	flush momentary pushbutton actuator	spring ret.
LPS B1134	red	STOP	flush momentary pushbutton actuator	spring ret.
LPS B1163	green	START	flush momentary pushbutton actuator	spring ret.
LPS B1142	black		flush momentary pushbutton actuator	spring ret.
LPS B1152	black		flush momentary pushbutton actuator	spring ret.
LPS B1158	white		flush momentary pushbutton actuator	spring ret.
LPS B1196	blue	RESET	flush momentary pushbutton actuator	spring ret.
LPS B2104	red	O	extended head pushbutton actuator	spring ret.

Mushroom head pushbutton actuators				
LPS B6144	red	Ø40 mm	mushroom pushbutton actuator	spring ret.
LPS B6642	black	Ø40 mm	mushroom pushbutton actuator	spring ret.

Emergency stopping (ISO 13850 compliant / IEC/EN/60974/5/5)

LPS B6744	red	Ø30 mm	latching mushroom pushbutton actuator	pull release
LPS B6634	red	Ø30 mm	latching mushroom pushbutton actuator	twist release
LPS B6644	red	Ø40 mm	latching mushroom pushbutton actuator	twist release
LPS B6844	red	Ø40 mm	latching mushroom pushbutton actuator	key release

Multi pushbutton actuators Ø22 mm				
Double-touch pushbutton actuators				
LPS B7113	grn/red	—	double touch pushbutton actuator (<i>flush</i>)	spring ret.
LPS B7191	blk/blk	—	double touch pushbutton actuator (<i>flush</i>)	spring ret.
LPS B7223	grn/red	I-O	double touch actuator (<i>ext. red button</i>)	spring ret.
LPS B7233	grn/red	START/STOP	double touch actuator (<i>ext. red button</i>)	spring ret.

Triple-touch pushbutton actuators (red extended stop button)				
LPS B7345	grn/grn	I-STOP-II	triple-touch pushbutton actuator	spring ret.
LPS B7355	grn/grn	-STOP-	triple-touch pushbutton actuator	spring ret.
LPS B7365	grn/grn	-STOP-	triple-touch pushbutton actuator	spring ret.
LPS B7375	grn/grn	-STOP-	triple-touch pushbutton actuator	spring ret.

Selector switch actuators				Ø22 mm	spring ret.
LPS S120	black	O - I	2 position	selector switch actuator	—
LPS S121	black	O - I	2 position	selector switch actuator	from Right
LPS S130	black	I - O - II	3 position	selector switch actuator	—
LPS S131	black	I - O - II	3 position	selector switch actuator	from L+R
LPS S132	black	I - O - II	3 position	selector switch actuator	from Left
LPS S133	black	I - O - II	3 position	selector switch actuator	from Right

Key selector switch actuators versions with different key codes available on request

type	colour	positions	key remove	description	spring return
LPS S320	black	O - I	Left	2 pos key switch actuator	—
LPS S321	black	O - I	L+R	2 pos key switch actuator	—
LPS S340	black	O - I	Left	2 pos key switch actuator	from Right
LPS S330	black	I - O - II	Centre	3 pos key switch actuator	—
LPS S331	black	I - O - II	L+C+R	3 pos key switch actuator	—
LPS S333	black	I - O - II	Right	3 pos key switch actuator	—
LPS S360	black	I - O - II	Centre	3 pos key switch actuator	from Right
LPS S370	black	I - O - II	Centre	3 pos key switch actuator	from L+R



Metal pushbuttons & selector switches

PLatinum SERIES



Platinum LPS series Ø22 mm (metal) - mounting securely by two screws

type	colour	positions	contacts	description	operation
------	--------	-----------	----------	-------------	-----------

Joystick operators

Ø22 mm

Supplied complete with contact block support and contact blocks

Without mechanical interlock

LPS J200	black	2 position	2 NO	joystick control no interlock	spring ret.
LPS J201	black	2 position	2 NO	joystick control no interlock	latch
LPS J400	black	4 position	4 NO	joystick control no interlock	spring ret.
LPS J401	black	4 position	4 NO	joystick control no interlock	latch

With mechanical interlock - in centre position

LPS J210	black	2 position	2 NO	joystick control interlocked	spring ret.
LPS J211	black	2 position	2 NO	joystick control interlocked	latch
LPS J410	black	4 position	4 NO	joystick control interlocked	spring ret.
LPS J411	black	4 position	4 NO	joystick control interlocked	latch
LPX AU101	black	Ø22 mm		legend holder for joystick controllers	12 mm (H)
LPX AU109	silver	engraveable		clip-in label for (above) holders	12 mm (H)

Illuminated control devices

Ø22 mm

LPXAU120M mounting adaptor/contact support (to be ordered separately)

Pilot light heads - Ø22mm

LPS L3	green	illuminated	Ø22 mm	pilot light head only	pilot light
LPS L4	red	illuminated	Ø22 mm	pilot light head only	pilot light
LPS L5	yellow	illuminated	Ø22 mm	pilot light head only	pilot light
LPS L6	blue	illuminated	Ø22 mm	pilot light head only	pilot light
LPS L7	t/parent	illuminated	Ø22 mm	pilot light head only	pilot light

Illuminated pushbutton actuators

Ø22 mm

LPS BL103	green	illuminated		flush head pushbutton actuator	spring ret.
LPS BL104	red	illuminated		flush head pushbutton actuator	spring ret.
LPS BL105	yellow	illuminated		flush head pushbutton actuator	spring ret.
LPS BL106	blue	illuminated		flush head pushbutton actuator	spring ret.
LPS BL203	green	illuminated		projecting head pushbutton actuator	spring ret.
LPS BL204	red	illuminated		projecting head pushbutton actuator	spring ret.
LPS BL205	yellow	illuminated		projecting head pushbutton actuator	spring ret.
LPS BL206	blue	illuminated		projecting head pushbutton actuator	spring ret.

Illuminated mushroom head pushbutton actuators

Ø40 mm

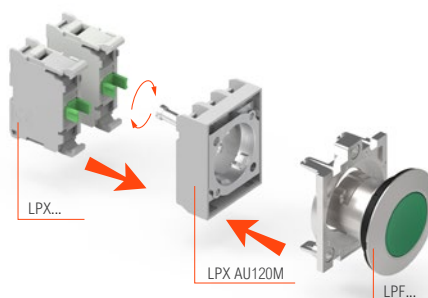
LPS BL6644	red	illuminated		latching mushroom head actuator	twist release
------------	-----	-------------	--	---------------------------------	---------------

Illuminated selector switch actuators

Ø22 mm

type	colour	positions	description	action
LPS SL1203	green	2 position	illuminated selector switch actuator	O - I
LPS SL1204	red	2 position	illuminated selector switch actuator	O - I
LPS SL1205	yellow	2 position	illuminated selector switch actuator	O - I
LPS SL1206	blue	2 position	illuminated selector switch actuator	O - I
LPS SL1303	green	3 position	illuminated selector switch actuator	I - O - II
LPS SL1304	red	3 position	illuminated selector switch actuator	I - O - II
LPS SL1305	yellow	3 position	illuminated selector switch actuator	I - O - II
LPS SL1306	blue	3 position	illuminated selector switch actuator	I - O - II

Ø30MM - Chromed metal



Refer to D-6...

PLatinum SERIES

Platinum LPF - Ø30 mm series (flat-metal) - Vandal proof

- Actuator profile of only 4 mm
- Screw panel fixing by two screws for secure mounting and vandal-proof installation
- Elegant style ergonomic design (*combining aesthetics with industrial durability*)
- IP66, IP67 and IP69K degree of protection for use even in extreme temperatures -25°C...+70°C
- Contact blocks, LED modules and **LPX AU120M** support

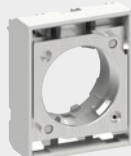
Actuators are supplied without **LPX AU120M** contact block support (*to be ordered separately*)

type	colour	style	description		action
Pushbutton actuators			Ø30 mm		
LPF B102	black	flush	momentary action pushbutton actuator		spring return
LPF B103	green	flush	momentary action pushbutton actuator		spring return
LPF B104	red	flush	momentary action pushbutton actuator		spring return
LPF B105	yellow	flush	momentary action pushbutton actuator		spring return
LPF B106	blue	flush	momentary action pushbutton actuator		spring return
LPF B108	white	flush	momentary action pushbutton actuator		spring return
LPF B204	red	projecting	momentary action pushbutton actuator		spring return
Selector switch actuators			Ø30 mm		spring return
LPF S120	black	2 position	O - I	selector switch actuator	—
LPF S121	black	2 position	O - I	selector switch actuator	from R
LPF S130	black	3 position	I - O - II	selector switch actuator	—
LPF S131	black	3 position	I - O - II	selector switch actuator	from L+R
LPF S133	black	3 position	I - O - II	selector switch actuator	from R
Key switch actuators			Ø30 mm		key release
LPF S320	black	2 position	(O-I) Left	key switch actuator	—
LPF S321	black	2 position	(O-I) L+R	key switch actuator	—
LPF S340	black	2 position	(O-I) Left	key switch actuator	from Left
LPF S330	black	3 position	(I-O-II) Centre	key switch actuator	—
LPF S331	black	3 position	(I-O-II) L+C+R	key switch actuator	—
LPF S370	black	3 position	(I-O-II) Centre	key switch actuator	from L+R
Illuminated control and signalling devices			Ø30 mm		
Pilot light head					
LPF L3	green	illuminated	pilot light head (with diffuser)		pilot light
LPF L4	red	illuminated	pilot light head (with diffuser)		pilot light
LPF L5	yellow	illuminated	pilot light head (with diffuser)		pilot light
LPF L6	blue	illuminated	pilot light head (with diffuser)		pilot light
Illuminated pushbuttons (with side visibility)					
LPF BL103	green	illuminated	flush momentary action actuator		spring return
LPF BL104	red	illuminated	flush momentary action actuator		spring return
LPF BL105	yellow	illuminated	flush momentary action actuator		spring return
LPF BL106	blue	illuminated	flush momentary action actuator		spring return
Illuminated selector switch actuators					
LPF SL1203	green	2 position	illuminated selector switch actuator		O - I
LPF SL1204	red	2 position	illuminated selector switch actuator		O - I
LPF SL1303	green	3 position	illuminated selector switch actuator		I - O - II
Other colours and configurations available on request.					
Contact blocks and support for LPF series					
LPX AU120M	support		contact block support for LPS and LPF - metallic actuators		
Contact blocks - require LPX AU120M for metal actuators					
• Self cleaning, dual scrape/oscillating action contacts					
• Thermal current Ith: 10A - IEC rated insulation voltage: 690V (C20 / C02 / C11: 250V)					
LPX C10	1 x NO	standard	screw	contact block for control devices	
LPX C01	1 x NC	standard	screw	contact block for control devices	
LPX C20	2 x NO	standard	screw	contact block for control devices	
LPX C02	2 x NC	standard	screw	contact block for control devices	
LPX C11	1NO+1NC	standard	screw	contact block for control devices	
LPX CS10	1 x NO	standard	push-in	contact block for control devices	
LPX CS01	1 x NC	standard	push-in	contact block for control devices	
Accessories for above LPF actuators					
LPFX AU100G	black	holder	legend holder for AU109 labels		12 mm (H)
LPX AU109	silver	engravable	clip-in label for above holder		12 mm (H)

PLatinum SERIES



LPX AU120



LPX AU120M



LPX C01



LPX C20



LPX LFE...



LPX LPSB...



LPX LFB3



LPX LPSM...

Contact blocks and accessories

- All versions LPC, LPS, LPF use the same contact elements, LED light elements and a wide range of accessories.

type	contact	supply	description		
------	---------	--------	-------------	--	--

Contact block supports - for LPC, LPS and LPF series control devices

- Supports up to 9 contact blocks (3 rows of 3 contact blocks)

LPX AU120	support	contact block	support	for LPC	chromed plastic actuators
LPX AU120M	support	contact block	support	LPS/LPF	metallic actuators

Contact blocks require LPX AU120 for plastic and LPX AU120M for metal actuators

- Thermal current I_{th}: 10A - IEC rated insulation voltage: 690V (C20 / C02 / C11: 250V)
- Self-cleaning, dual scrape/oscillating action contacts
- Can be clipped onto the back of another contact block

LPX C10	1 x NO	standard	screw terminal contact block for control devices		
LPX C01	1 x NC	standard	screw terminal contact block for control devices		
LPX C20	2 x NO	standard	screw terminal contact block for control devices		
LPX C02	2 x NC	standard	screw terminal contact block for control devices		
LPX C11	1NO+1NC	standard	screw terminal contact block for control devices		
LPX C10A	1 x NO	early make	screw terminal contact block for control devices		
LPX C01D	1 x NC	late break	screw terminal contact block for control devices		

Push-in terminals - for cables with ferrules (no tool required for insertion).

Guaranteed retaining force over time even in the presence of vibration and/or impact.

LPX CS10	1 x NO	standard	push-in terminal contact block for control devices		
LPX CS01	1 x NC	standard	push-in terminal contact block for control devices		

LED indicating modules (protected) for all control devices

- Overvoltage protection
- Electrical life: 100.000 hours
- Total protection against overvoltage/stray currents in wiring, reduced flickering phenomenon
- Clips onto LPXAU120 and LPXAU120M supports

type	colour	supply voltage	lamp	state	description
------	--------	----------------	------	-------	-------------

LED module (steady light)

LPX LPB3	green	12 - 30 VAC/DC	LED	steady	integrated lamp module
LPX LPB4	red	12 - 30 VAC/DC	LED	steady	integrated lamp module
LPX LPB5	yellow	12 - 30 VAC/DC	LED	steady	integrated lamp module
LPX LPB6	blue	12 - 30 VAC/DC	LED	steady	integrated lamp module
LPX LPB8	white	12 - 30 VAC/DC	LED	steady	integrated lamp module
LPX LPE3	green	85 - 140 VAC	LED	steady	integrated lamp module
LPX LPE4	red	85 - 140 VAC	LED	steady	integrated lamp module
LPX LPE5	yellow	85 - 140 VAC	LED	steady	integrated lamp module
LPX LPE6	blue	85 - 140 VAC	LED	steady	integrated lamp module
LPX LPE8	white	85 - 140 VAC	LED	steady	integrated lamp module
LPX LPM3	green	185 - 265 VAC	LED	steady	integrated lamp module
LPX LPM4	red	185 - 265 VAC	LED	steady	integrated lamp module
LPX LPM5	yellow	185 - 265 VAC	LED	steady	integrated lamp module
LPX LPM6	blue	185 - 265 VAC	LED	steady	integrated lamp module
LPX LPM8	white	185 - 265 VAC	LED	steady	integrated lamp module

LED module (flashing light)

LPX LFB3	green	18 - 30 VAC/DC	LED	flashing	integrated lamp module
LPX LFB4	red	18 - 30 VAC/DC	LED	flashing	integrated lamp module
LPX LFB5	yellow	18 - 30 VAC/DC	LED	flashing	integrated lamp module
LPX LFB6	blue	18 - 30 VAC/DC	LED	flashing	integrated lamp module
LPX LFB8	white	18 - 30 VAC/DC	LED	flashing	integrated lamp module
LPX LFM3	green	185 - 265 VAC	LED	flashing	integrated lamp module
LPX LFM4	red	185 - 265 VAC	LED	flashing	integrated lamp module
LPX LFM5	yellow	185 - 265 VAC	LED	flashing	integrated lamp module
LPX LFM6	blue	185 - 265 VAC	LED	flashing	integrated lamp module
LPX LFM8	white	185 - 265 VAC	LED	flashing	integrated lamp module

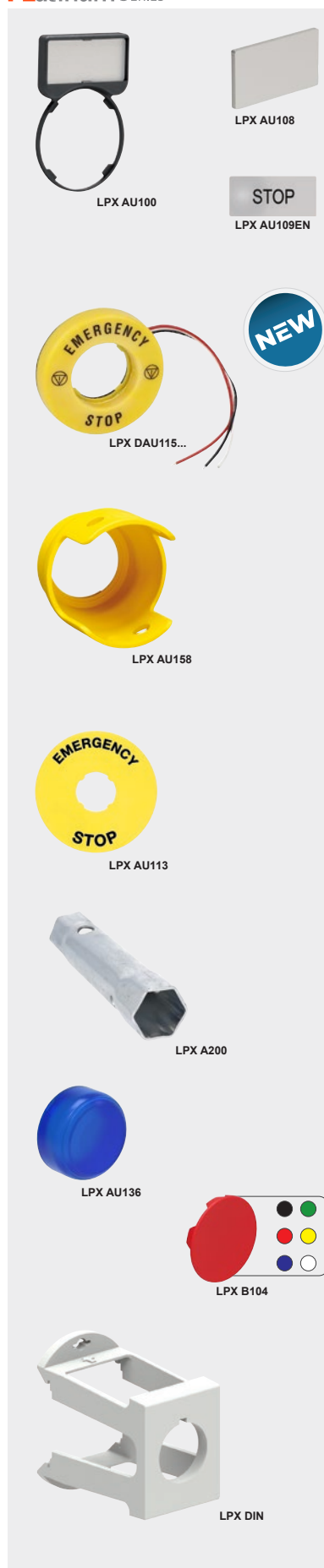
LED module (push-in terminals)

- For cables with ferrules - simply push ferrule into terminals (no tool required for insertion) guaranteed retaining force over time even in presence of vibration and/or impact

LPX LPSB*	*	12 - 30 VAC/DC	LED	steady	integrated lamp module
LPX LPSM*	*	185 - 265 VAC	LED	steady	integrated lamp module
LPX LFE*	*	85 - 140 VAC	LED	steady	integrated lamp module

* Replace with: 3 (green) / 4 (red) / 5 (yellow) / 6 (blue) / 8 (white) - for colours

PLatinum SERIES



Accessories for control and signalling devices

All versions LPC, LPS, LPF use the same contact elements, LED light elements and a wide range of accessories.

type	colour	supply	description	
Legend plates and labels - for LPC, LPS and LPF series control devices				
LPX AU100	black	Ø22 mm	legend holder for AU109 labels	12 mm (H)
LPFX AU100G	black	Ø30 mm	legend holder for AU109 labels	12 mm (H)
LPX AU101	black	Ø22 mm	legend holder for joystick controllers	12 mm (H)
LPXAGB210	silver	OFF-ON	label for APX AU100 holders	12 mm (H)
LPXAGB212	silver	AUTO-MAN	label for APX AU100 holders	12 mm (H)
LPXAGB214	silver	AUTO-O-MAN	label for APX AU100 holders	12 mm (H)
LPXAGB216	silver	REV-O-FWD	label for APX AU100 holders	12 mm (H)
LPXAGB220	silver	START	label for APX AU100 holders	12 mm (H)
LPX AU109	silver	engraveable	clip-in label for (above) holders	12 mm (H)
LPX AU203	silver	blank	label for label for AU109 holders	12 mm (H)
LPX AU105	black	Ø22 mm	legend holder for AU108 labels	15 mm (H)
LPX AU108	silver	engraveable	clip-in I2.5label for (above) holders	15 mm (H)

Illuminated "Emergency Stop" disc - for 22mm mushroom head pushbuttons

- To enhance visibility of the emergency button ensuring its operation in conditions of low visibility

LPX DAU115024	yellow	24 VAC/DC	LED	illuminated emergency disc	Ø60 mm
LPX DAU115230	yellow	240 VAC	LED	illuminated emergency disc	Ø60 mm

Emergency labels (to be mounted behind mushroom pushbuttons)

LPX AU113	yellow	"emergency stop" plastic label/disc for pushbuttons	Ø90 mm
LPX AU115	yellow	"emergency stop" plastic label/disc for pushbuttons	Ø60 mm
LPX AU110	yellow	"emergency stop" adhesive label for pushbuttons	65 x 35 mm

Protection shrouds - (to prevent inadvertent operation of mushroom pushbuttons)

LPX AU158	yellow	shroud	padlockable for latching mushroom pushbutton
LPX AU159	yellow	half shroud	prevents inadvertent operation of mushroom p/button

Accessories for control and signalling device

LPX A130	grey	Ø22 mm hole blanking plug (threaded)
LPX A140	grey	action plug for using central position on actuators
LPX A150	grey	spare rod (150 mm) for mechanical reset pushbuttons
LPX A170	silver	No. 455 replacement standard key set for key switches
LPX A170R*	silver	special key set for key switches with different keys

* Add: 421E, 458A, 520E, 3131A, 3433E (for different key requirement)

LPX AU00	black	spare plastic threaded nut for mounting plastic actuators
LPX AU01	silver	replacement ring (steel) with teeth to avoid turning when mounted
LPX A162	silver	reduction ring to mount Ø22 mm LPC through Ø30 mm hole
LPX A162M	silver	reduction ring to mount Ø22 mm LPS through Ø30 mm hole
LPX A200	silver	socket spanner for actuator fixing ring tightening

Rubber protection boots for pushbuttons

LPX AU13*	*	rubber boot	protection boot for flush pushbutton actuators
LPX AU14*	*	rubber boot	rubber protection boot for extended pushbuttons
LPX AU157	t/parent	rubber boot	protection boot for double/triple touch pushbuttons
LPX AU167	t/parent	rubber boot	rubber protection boot for mushroom pushbuttons
LPX AU170	t/parent	rubber boot	protection cover (hinged) for Ø22 mm pushbuttons

* Replace with: 2 (black) / 3 (green) / 4 (red) / 5 (yellow) / 6 (blue) / 8 (white) - for colours

Spares for pushbuttons

LPX B10*	*	replacement front cap for flush pushbutton actuators
LPX B20*	*	replacement front cap for extended head pushbutton actuators
LPX BL10*	*	replacement lens for illuminated flush pushbutton actuators
LPX BL20*	*	replacement lens for illuminated ext. head pushbutton actuators

* Replace with: 2 (black) / 3 (green) / 4 (red) / 5 (yellow) / 6 (blue) / 8 (white) - for colours

DIN-rail mount adaptor for control devices (Same profile as standard MCBs)

LPX DIN	grey	DIN-rail	mounting adaptor for Ø22 mm pushbuttons
---------	------	----------	---

Ø22MM - Mounting adaptor





LMP B104T01



LMP B204T11



LMP B6144T11



LMP B6644T11



LMP S120T10



LMP S330T20



LPM LB3



LPM LB5

Ø22 mm Monoblock control devices - Actuator with built-in contact arrangement

- Contact rating: 5A - 240 VAC
- Protection: IP66/67/69K (rear terminals IP20)

type	colour	contact		description	action
Pushbutton switches Lens: Ø29 x 13 - Body: L 42.5 mm					
LMP B104T01	red	1 NC	flush	momentary pushbutton	spring ret.
LMP B103T10	green	1 NO	flush	momentary pushbutton	spring ret.
LMP B103T11	green	1NO + 1NC	flush	momentary pushbutton	spring ret.
LMP B104T11	red	1NO + 1NC	flush	momentary pushbutton	spring ret.
LMP B102T11	black	1NO + 1NC	flush	momentary pushbutton	spring ret.
LMP B108T11	white	1NO + 1NC	flush	momentary pushbutton	spring ret.
LMP B204T11	red	1NO + 1NC	project	projecting head pushbutton	spring ret.

Alternate action pushbutton actuator (push-on / push-off)

LMP Q102T11	black	1NO + 1NC	flush alternate action p/button actuator	alternate
-------------	-------	-----------	--	-----------

Mushroom head pushbutton switches Lens: Ø40 x 21/33 - Body: L 42.5 mm

LMP B6144T11	red	1NO + 1NC	mushroom head pushbutton	spring ret.
LMP B6644T01	red	1 NC	latching mushroom head pushbutton	twist rel.
LMP B6644T11	red	1NO + 1NC	latching mushroom head pushbutton	twist rel.

Selector switches Lens: Ø29 x 26 - Body: L 42.5 mm**2 position selector switches** spring ret.

LMP S120T10	black	1NO	O - I	2 position	selector switch	–
LMP S120T11	black	1NO + 1NC	O - I	2 position	selector switch	–

3 position selector switches

LMP S130T20	black	2 NO	I - O - II	3 position	selector switch	–
LMP S131T20	black	2 NO	I - O - II	3 position	selector switch	from L+R

Key operated selector switch Lens: Ø29 x 46.2 - Body: L 42.5 mm**2 position key switches** (key removable from left position)

LMP S320T10	black	1NO	O - I	2 position	key actuated selector switch
-------------	-------	-----	-------	------------	------------------------------

3 position key switches (key removable from centre position)

LMP S330T20	black	2 NO	I - O - II	3 position	key actuated selector switch
-------------	-------	------	------------	------------	------------------------------

Monoblock LED pilot lights

LPM series are designed as single units, integrating the LED light source, lens, and housing into a compact space-saving form factor. This makes them ideal for applications where space is limited or where multiple indicators need to be installed in close proximity.

- Compliant with standards: IEC/EN 60947-1, IEC/EN60947-5-1, UL508, CSA C22.2 no 14
- Protection: IP66/67/69K (rear terminals IP20)

type	colour	supply	description
------	--------	--------	-------------

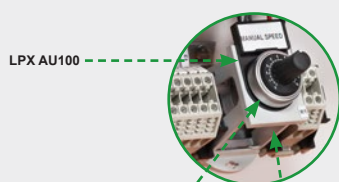
Ø22 mm LED monoblock pilot lights

LPM LA3	green	12 VAC/DC	Ø22 mm	monoblock	panel-mount LED pilot light
LPM LA4	red	12 VAC/DC	Ø22 mm	monoblock	panel-mount LED pilot light
LPM LB1	orange	24 VAC/DC	Ø22 mm	monoblock	panel-mount LED pilot light
LPM LB3	green	24 VAC/DC	Ø22 mm	monoblock	panel-mount LED pilot light
LPM LB4	red	24 VAC/DC	Ø22 mm	monoblock	panel-mount LED pilot light
LPM LB5	yellow	24 VAC/DC	Ø22 mm	monoblock	panel-mount LED pilot light
LPM LB6	blue	24 VAC/DC	Ø22 mm	monoblock	panel-mount LED pilot light
LPM LB7	t/parent	24 VAC/DC	Ø22 mm	monoblock	panel-mount LED pilot light
LPM LD3	green	48 VAC/DC	Ø22 mm	monoblock	panel-mount LED pilot light
LPM LD4	red	48 VAC/DC	Ø22 mm	monoblock	panel-mount LED pilot light
LPM LE3	green	110 VAC	Ø22 mm	monoblock	panel-mount LED pilot light
LPM LE4	red	110 VAC	Ø22 mm	monoblock	panel-mount LED pilot light
LPM LE7	t/parent	110 VAC	Ø22 mm	monoblock	panel-mount LED pilot light
LPM LM1	orange	230 VAC	Ø22 mm	monoblock	panel-mount LED pilot light
LPM LM3	green	230 VAC	Ø22 mm	monoblock	panel-mount LED pilot light
LPM LM4	red	230 VAC	Ø22 mm	monoblock	panel-mount LED pilot light
LPM LM5	yellow	230 VAC	Ø22 mm	monoblock	panel-mount LED pilot light
LPM LM6	blue	230 VAC	Ø22 mm	monoblock	panel-mount LED pilot light
LPM LM7	t/parent	230 VAC	Ø22 mm	monoblock	panel-mount LED pilot light

PLatinum SERIES



LPC ZS...



LPC AU100



LPC PA001



LPC XP100



LPC D01

Monoblock control and signalling devices Ø22 mm

type	colour	supply voltage	IP	dB/10cm	description
------	--------	----------------	----	---------	-------------

Monoblock buzzers - Continuous or pulse tone sound

Monoblock buzzers are used as acoustic indication in automation systems and on-board machinery in production processes and manufacturing environments.

Long life - low consumption - compact dimensions

- Continuous or pulse tone
- Service life: >30.000 hours (*permanently energised*)
- Operating temperature: -25...+70°C

IP40 version (90 dB/10cm)

LPC ZSA	black	9 - 15 VAC/DC	IP40	90dB	Ø22 mm panel-mount buzzer
LPC ZSB	black	18 - 30 VAC/DC	IP40	90dB	Ø22 mm panel-mount buzzer
LPC ZSM	black	185 - 265 VAC/DC	IP40	90dB	Ø22 mm panel-mount buzzer

IP66/67/69K version (80 dB/10cm)

LPC ZSAIP	black	9 - 15 VAC/DC	66-69K	80dB	Ø22 mm panel-mount buzzer
LPC ZSBIP	black	18 - 30 VAC/DC	66-69K	80dB	Ø22 mm panel-mount buzzer
LPC ZSMIP	black	185 - 265 VAC/DC	66-69K	80dB	Ø22 mm panel-mount buzzer

Monoblock potentiometers *UL-certified for use in demanding ambient conditions*

Monoblock potentiometers are compact, single-unit potentiometers which consist of shafts and feature a rotary design, allowing users to adjust resistance by turning the knob. By integrating the shaft and knob into a single unit, making it more space-efficient and easier to install.

Potentiometers are typically used for regulating parameters of many devices (*e.g. the speed of electric motors through static converters, temperature regulation etc.*)

Mounts through standard Ø22 mm pushbutton mounting hole.

- Protection degree: **IP66, IP67 and IP69K**
- Monoblock body: With 1-turn graduated scale
- Insulation voltage Ui: 250 VAC
- Cermet technology ensures stable, constant resistance values over time

IP66/67/69K version 0...10kΩ

LPC PA001	black	0...1kΩ	66-69K	panel-mounting potentiometer
LPC PA005	black	0...5kΩ	66-69K	panel-mounting potentiometer
LPC PA010	black	0...10kΩ	66-69K	panel-mounting potentiometer

Potentiometer drives

Drive-and-scale assembly that you mount on your panel to give you a neat knob and graduated dial for an internal potentiometer shaft.

LPC XP100* graduated dial assembly for a potentiometer shaft

* Potentiometer not included

Communication interface connectors

USB and RJ45 communication interface connectors are used in industrial environments, which in recent years have seen an increase in the number of connections between machines, production lines, equipment and measuring instruments.

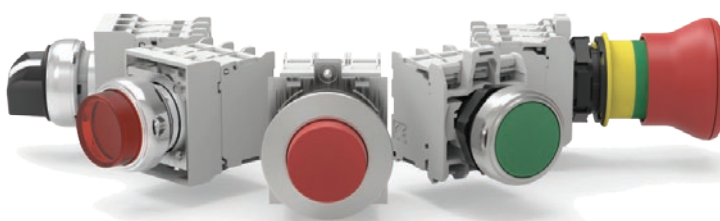
These interfaces provide the transmission of data in both directions between the various devices. Overall these connectors offer reliable communication and connectivity within compact and durable monoblock designs, ensuring optimal performance in demanding environments.

USB and RJ45 communication interfaces Ø22 mm

IP65 (with cap closed)

LPC D01	black	USB	A-A	panel-mount communication interface
LPC D03	black	USB	A-B	panel-mount communication interface
LPC D05	black	USB	B-A	panel-mount communication interface
LPC D06	black	RJ45	Ethernet	panel-mount communication interface

PLatinum SERIES



Pushbutton control stations



LPZ P1B5600



LP9S01R



LPZ P2B8901



LPZ P1A5P



LPZ P1A8



LPZ P3A8



LPZ M5A8



LPZ M4A8



LPZ M2A8

Polycarbonate pushbutton control stations

- High protection degree: IP66, IP67, IP69K
- New styling with incorporated anti-rotation facility for actuators
- M16 or M20/25 cable gland knock-outs on all sides and base
- Easy wiring with internal contact identification on cover and on base
- Contact blocks and lamp modules are base mounted with screw terminals facing forward

type	button colour	contact	cover colour	button symbol	description	dimensions(mm) (H) (W) (D)		
------	---------------	---------	--------------	---------------	-------------	-------------------------------	--	--

Complete pushbutton stations

1-way pushbutton stations

LPZ P1B8100	green	1 x NO	grey	I	flush pushbutton station			
LPZ P1B8102	red	1 x NC	grey	O	extended pushbutton station	72	72	56
LPZ P1B5600	red	1 x NC	yellow	—	latch mushroom twist release			
LP9S01R	red	1 x NC	grey		palm pushbutton station	94	94	90
LP9P02R	red	2 x NC	yellow		palm latching pull release station			

2-way pushbutton stations

LPZ P2B8901	green	1 x NO	grey	I	flush pushbutton station	117	72	56
	red	1 x NC	grey	O	extended pushbutton station			

3-way pushbutton stations

	green	1 x NO	grey	↑	flush pushbutton			
LPZ P3B8907	red	1 x NC	grey	O	extended pushbutton	151	72	56
	green	1 x NO	grey	↓	flush pushbutton			

LPZ P series - Polycarbonate "empty" stations

type	holes	rows	cover	description	(H)	(W)	(D)
------	-------	------	-------	-------------	-----	-----	-----

Empty pushbutton stations (without actuators and contact blocks)

LPZ P1A5	1-hole	1	yellow	empty polycarb pushbutton station	72	72	56
LPZ P1A5P	1-hole	1	yellow	empty p/button station with shroud	73	72	56
LPZ P1A8	1-hole	1	grey	empty polycarb pushbutton station	72	72	56
LPZ P2A8	2-hole	1	grey	empty polycarb pushbutton station	117	72	56
LPZ P3A8	3-hole	1	grey	empty polycarb pushbutton station	151	72	56
LPZ P4A8	4-hole	1	grey	empty polycarb pushbutton station	186	72	56
LPZ P5A8	5-hole	1	grey	empty polycarb pushbutton station	220	72	56
LPZ P6A8	6-hole	1	grey	empty polycarb pushbutton station	256	72	56
LPZ XP5				4-piece set yellow screw protection caps for pushbutton stations			4pcs
LPZ XP8				4-piece set grey screw protection caps for pushbutton stations			4pcs

Base mounting contact blocks and indicating modules for above stations

LPX CB10	green	1 x NO		base-mount screw-terminal contact block for above stations			
LPX CB01	red	1 x NC		base-mount screw-terminal contact block for above stations			
LPX LPBB*	*	12 - 30 VAC/DC		base-mount LED-integrated lamp module for above stations			
LPX LPBM*	*	185 - 265 VAC		base-mount LED-integrated lamp module for above stations			

* Replace with: 3 (green) / 4 (red) / 5 (yellow) / 6 (blue) / 8 (white) - for colours

LPZ M series - Metallic "empty" stations

- Without actuators and contact blocks
- Enclosures made of aluminium alloy suitable for pushbuttons, selector switches and pilot lights
- Cable entry Ø21 mm (for M20 or PG13.5 cable glands)
- No cable entry for 8/12/16-way

Metallic control stations

IP66, IP67

LPZ M1A5	1-hole	1	yellow	industrial metal pushbutton station	80	80	73
LPZ M1A5P	1-hole	1	yellow	p/button station (with half shroud)	80	80	73
LPZ M1A8	1-hole	1	grey	industrial metal pushbutton station	80	80	73
LPZ M2A8	2-hole	1	grey	industrial metal pushbutton station	130	80	73
LPZ M3A8	3-hole	1	grey	industrial metal pushbutton station	170	80	73
LPZ M4A8	4-hole	1	grey	industrial metal pushbutton station	170	80	73
LPZ M5A8	5-hole	1	grey	industrial metal pushbutton station	230	80	73
LPZ M6A8	6-hole	1	grey	industrial metal pushbutton station	230	80	73
LPZ M8CA8	8-hole	2 x 4	grey	industrial metal pushbutton station	160	160	90
LPZ M12CA8	12-hole	3 x 4	grey	industrial metal pushbutton station	170	190	90
LPZ M16CA8	16-hole	4 x 4	grey	industrial metal pushbutton station	190	250	90



GX16...



GX32...U25



GX16 52U



GXM6

GX series - Rotary cam switches

type	poles	contact rating		description	action
		AC1 (A)	AC23A (kW at 400V)		

• 16A/20A switches (std. 48 x 48 mm), 32A/40A switches (std. 65 x 65 mm) front plate

ON/OFF switches

GX16 90U	1-pole	16A	5.5 kW	on-off switch	(O-I)
GX16 91U	2-pole	16A	5.5 kW	on-off switch	(O-I)
GX16 10U	3-pole	16A	5.5 kW	on-off switch	(O-I)
GX16 92U	4-pole	16A	5.5 kW	on-off switch	(O-I)
GX20 90U	1-pole	20A	7.5 kW	on-off switch	(O-I)
GX20 91U	2-pole	20A	7.5 kW	on-off switch	(O-I)
GX20 10U	3-pole	20A	7.5 kW	on-off switch	(O-I)
GX20 92U	4-pole	20A	7.5 kW	on-off switch	(O-I)
GX32 90U	1-pole	32A	15 kW	on-off switch	(O-I)
GX32 91U	2-pole	32A	15 kW	on-off switch	(O-I)
GX32 10U	3-pole	32A	15 kW	on-off switch	(O-I)
GX32 92U	4-pole	32A	15 kW	on-off switch	(O-I)
GX40 90U	1-pole	40A	18.5 kW	on-off switch	(O-I)
GX40 91U	2-pole	40A	18.5 kW	on-off switch	(O-I)
GX40 10U	3-pole	40A	18.5 kW	on-off switch	(O-I)
GX40 92U	4-pole	40A	18.5 kW	on-off switch	(O-I)

ON/OFF isolators with padlockable red/yellow operating handle

GX16 10U25	3-pole	16A	5.5 kW	main isolator	(O-I)
GX16 92U25	4-pole	16A	5.5 kW	main isolator	(O-I)
GX32 10U25	3-pole	32A	15 kW	main isolator	(O-I)
GX32 92U25	4-pole	32A	15 kW	main isolator	(O-I)

Changeover switches with "OFF" position

GX16 51U	1-pole	16A	5.5 kW	changeover switch	(I-O-II)
GX16 52U	2-pole	16A	5.5 kW	changeover switch	(I-O-II)
GX16 53U	3-pole	16A	5.5 kW	changeover switch	(I-O-II)
GX16 75U	4-pole	16A	5.5 kW	changeover switch	(I-O-II)
GX20 51U	1-pole	20A	7.5 kW	changeover switch	(I-O-II)
GX20 52U	2-pole	20A	7.5 kW	changeover switch	(I-O-II)
GX20 53U	3-pole	20A	7.5 kW	changeover switch	(I-O-II)
GX20 75U	4-pole	20A	7.5 kW	changeover switch	(I-O-II)
GX32 51U	1-pole	32A	15 kW	changeover switch	(I-O-II)
GX32 52U	2-pole	32A	15 kW	changeover switch	(I-O-II)
GX32 53U	3-pole	32A	15 kW	changeover switch	(I-O-II)
GX32 75U	4-pole	32A	15 kW	changeover switch	(I-O-II)
GX40 51U	1-pole	40A	18.5 kW	changeover switch	(I-O-II)
GX40 52U	2-pole	40A	18.5 kW	changeover switch	(I-O-II)
GX40 53U	3-pole	40A	18.5 kW	changeover switch	(I-O-II)
GX40 75U	4-pole	40A	18.5 kW	changeover switch	(I-O-II)

Changeover switches without "OFF" position

GX16 54U	1-pole	16A	5.5 kW	changeover switch	(I-II)
GX16 55U	2-pole	16A	5.5 kW	changeover switch	(I-II)
GX16 56U	3-pole	16A	5.5 kW	changeover switch	(I-II)
GX16 69U	4-pole	16A	5.5 kW	changeover switch	(I-II)
GX20 54U	1-pole	20A	7.5 kW	changeover switch	(I-II)
GX20 55U	2-pole	20A	7.5 kW	changeover switch	(I-II)
GX20 56U	3-pole	20A	7.5 kW	changeover switch	(I-II)
GX20 69U	4-pole	20A	7.5 kW	changeover switch	(I-II)
GX32 54U	1-pole	32A	15 kW	changeover switch	(I-II)
GX32 55U	2-pole	32A	15 kW	changeover switch	(I-II)
GX32 56U	3-pole	32A	15 kW	changeover switch	(I-II)
GX32 69U	4-pole	32A	15 kW	changeover switch	(I-II)

Voltmeter selector switches

GX16 67U	—	16A	voltmeter selector switch	ph-ph + off
GX16 66U	—	16A	voltmeter selector switch	ph-ph/ph-n + off

Ammeter selector switches

GX16 97U	—	16A	ammeter selector switch	direct reading
GX16 98U	—	16A	ammeter selector switch	for 3 CTs

Accessories for GX series cam switches

GXM5	48 x 60 mm	front plate with legend for GX switches	16/20A
GXM6	65 x 80 mm	front plate with legend for GX switches	32/40A



Indicating devices



AD16-16DSR02



AD16-16DSY22



AD16-16DSG22



AD16-16MR22



AD22-22DSR01



AD22-22DSG02



AD22-22DSB38



AD22-22D/KW22

LED pilot lights - Super bright multi-chip LED pilot lights (*with diffuser/legend insert*)

- Shock resistant, low power consumption $\geq 20\text{mA}$
- Brightness: $\geq 100\text{cd/m}^2$
- Long life $\geq 30.000\text{ hrs}$

type	lens colour	voltage ± 20%	mounting hole Ø	description
Ø16 mm LED pilot lights (high brightness)			Lens: Ø19 x 10 - Body: L 24 mm	
• IP65 (IP20 terminal protection)				
AD16-16DSG02	green	24 VAC/DC	Ø16 mm	panel-mount LED pilot light
AD16-16DSY02	yellow	24 VAC/DC	Ø16 mm	panel-mount LED pilot light
AD16-16DSB02	blue	24 VAC/DC	Ø16 mm	panel-mount LED pilot light
AD16-16DSW02	white	24 VAC/DC	Ø16 mm	panel-mount LED pilot light
AD16-16DSR11	red	110 VAC/DC	Ø16 mm	panel-mount LED pilot light
AD16-16DSG11	green	110 VAC/DC	Ø16 mm	panel-mount LED pilot light
AD16-16DSY11	yellow	110 VAC/DC	Ø16 mm	panel-mount LED pilot light
AD16-16DSB11	blue	110 VAC/DC	Ø16 mm	panel-mount LED pilot light
AD16-16DSW11	white	110 VAC/DC	Ø16 mm	panel-mount LED pilot light
AD16-16DSR22	red	220 VAC	Ø16 mm	panel-mount LED pilot light
AD16-16DSG22	green	220 VAC	Ø16 mm	panel-mount LED pilot light
AD16-16DSY22	yellow	220 VAC	Ø16 mm	panel-mount LED pilot light
AD16-16DSB22	blue	220 VAC	Ø16 mm	panel-mount LED pilot light
AD16-16DSW22	white	220 VAC	Ø16 mm	panel-mount LED pilot light

Self-flashing LED pilot light and electronic buzzer Lens: Ø19 x 10 - Body: L 41.5 mm

AD16-16MR02	red	24 VAC/DC	Ø16 mm	self-flash LED p/light + buzzer
AD16-16MR22	red	220 VAC	Ø16 mm	self-flash LED p/light + buzzer


Ø22 mm LED pilot lights (high brightness) - 4 LEDs Lens: Ø29 x13 mm - Body: L 39 mm

• IP65 (IP20 terminal protection)				
AD22-22DSR01	red	12 VAC/DC	Ø22 mm	panel-mount LED pilot light
AD22-22DSG01	green	12 VAC/DC	Ø22 mm	panel-mount LED pilot light
AD22-22DSA01	amber	12 VAC/DC	Ø22 mm	panel-mount LED pilot light
AD22-22DSY01	yellow	12 VAC/DC	Ø22 mm	panel-mount LED pilot light
AD22-22DSB01	blue	12 VAC/DC	Ø22 mm	panel-mount LED pilot light
AD22-22DSW01	white	12 VAC/DC	Ø22 mm	panel-mount LED pilot light
AD22-22DSR02	red	24 VAC/DC	Ø22 mm	panel-mount LED pilot light
AD22-22DSG02	green	24 VAC/DC	Ø22 mm	panel-mount LED pilot light
AD22-22DSA02	amber	24 VAC/DC	Ø22 mm	panel-mount LED pilot light
AD22-22DSY02	yellow	24 VAC/DC	Ø22 mm	panel-mount LED pilot light
AD22-22DSB02	blue	24 VAC/DC	Ø22 mm	panel-mount LED pilot light
AD22-22DSW02	white	24 VAC/DC	Ø22 mm	panel-mount LED pilot light
AD22-22DSR11	red	110 VAC/DC	Ø22 mm	panel-mount LED pilot light
AD22-22DSG11	green	110 VAC/DC	Ø22 mm	panel-mount LED pilot light
AD22-22DSA11	amber	110 VAC/DC	Ø22 mm	panel-mount LED pilot light
AD22-22DSY11	yellow	110 VAC/DC	Ø22 mm	panel-mount LED pilot light
AD22-22DSB11	blue	110 VAC/DC	Ø22 mm	panel-mount LED pilot light
AD22-22DSW11	white	110 VAC/DC	Ø22 mm	panel-mount LED pilot light
AD22-22DSR22	red	220 VAC/DC	Ø22 mm	panel-mount LED pilot light
AD22-22DSG22	green	220 VAC/DC	Ø22 mm	panel-mount LED pilot light
AD22-22DSA22	amber	220 VAC/DC	Ø22 mm	panel-mount LED pilot light
AD22-22DSY22	yellow	220 VAC/DC	Ø22 mm	panel-mount LED pilot light
AD22-22DSB22	blue	220 VAC/DC	Ø22 mm	panel-mount LED pilot light
AD22-22DSW22	white	220 VAC/DC	Ø22 mm	panel-mount LED pilot light
AD22-22DSR38	red	380 VAC	Ø22 mm	panel-mount LED pilot light
AD22-22DSG38	green	380 VAC	Ø22 mm	panel-mount LED pilot light
AD22-22DSA38	amber	380 VAC	Ø22 mm	panel-mount LED pilot light
AD22-22DSY38	yellow	380 VAC	Ø22 mm	panel-mount LED pilot light
AD22-22DSB38	blue	380 VAC	Ø22 mm	panel-mount LED pilot light
AD22-22DSW38	white	380 VAC	Ø22 mm	panel-mount LED pilot light


Ø22 mm LED pilot lights with anti-interference Longer body: L 50 mm

- Longer body accommodates built-in anti-interference circuit (*threshold value - below 40V*)
- Prevents unwanted illuminating in presence of slight voltage backfeed in certain applications

AD22-22D/KR22	red	230 VAC	Ø22 mm	panel-mount LED pilot light
AD22-22D/KG22	green	230 VAC	Ø22 mm	panel-mount LED pilot light
AD22-22D/KA22	amber	230 VAC	Ø22 mm	panel-mount LED pilot light
AD22-22D/KY22	yellow	230 VAC	Ø22 mm	panel-mount LED pilot light
AD22-22D/KB22	blue	230 VAC	Ø22 mm	panel-mount LED pilot light
AD22-22D/KW22	white	230 VAC	Ø22 mm	panel-mount LED pilot light



AD22-22MR02



AD22-22MK02

Panel-mount control / indicating devices Ø22mm				
type	colour	voltage ± 20%	mounting hole Ø	description
Ø22 mm dual colour LED pilot light			IP65	
<ul style="list-style-type: none"> Dual light - red or green LED indication on one pilot light (<i>white lens</i>) Lens: Ø29 x 13 - Body: L 54 mm 				
AD22-22DRG02	red/green	24 VAC/DC	Ø22 mm	panel-mount LED pilot light
AD22-22DRG11	red/green	110 VAC/DC	Ø22 mm	panel-mount LED pilot light
AD22-22DRG22	red/green	220 VAC	Ø22 mm	panel-mount LED pilot light
Self-flashing LED pilot light			(intermittent flashing - 2 Hz)	
AD22-22SR02	red	24 VAC/DC	Ø22 mm	self-flashing LED pilot light
AD22-22SR22	red	220 VAC	Ø22 mm	self-flashing LED pilot light
Ø22 mm panel-mount buzzer			IP40	
<ul style="list-style-type: none"> Continuous sound buzzer (<i>80dB - 10 cm</i>) Lens: Ø30 x 13 - Body: L 49 mm 				
AD22-22MK02	black	24 VAC/DC	Ø22 mm	panel-mounting buzzer
AD22-22MK22	black	220 VAC	Ø22 mm	panel-mounting buzzer
Combination buzzer / flashing LED pilot light				
<ul style="list-style-type: none"> Intermittent sound and flashing pilot light 				
AD22-22MR02	red	24 VAC/DC	Ø22 mm	self-flash LED p/light + buzzer
AD22-22MR22	red	220 VAC	Ø22 mm	self-flash LED p/light + buzzer

Quick Selection Chart - LED Pilot Lights & Signalling Devices

Mechtric offers a comprehensive range of high-performance LED pilot lights and signalling devices for industrial control panels and automation systems.

The range includes compact monoblock designs for quick installation, along with multi-chip high-brightness LEDs for maximum visibility.

With wide voltage options, multiple lens sizes, and models featuring sound, light, and multi-colour effects, Mechtric provides solutions for virtually any signalling application.

- **High Brightness:** Multi-chip LED technology for excellent daylight visibility.
- **Monoblock Design:** Compact, all-in-one construction for fast and simple panel mounting.
- **Wide Voltage Range:** Models covering 12–380 VAC/DC, suitable for various control and signalling applications.
- **Flexible Mounting Sizes:** Standard lens sizes of Ø16 mm, Ø22 mm, Ø41 mm, and Ø50 mm to suit different panel layouts.
- **Rugged Industrial Design:** IP ratings up to IP66/67/69K for use in demanding industrial and outdoor environments.

LED Pilot Lights & Signalling Devices

Type / Series	LPM series	AD16 series	AD22 series	AD22 series	P50 S series	P50 RGB series	P40 S series
Brand	Lovato	Mechtric	Mechtric	Mechtric	Sirena	Sirena	Sirena
Lens Ø	Ø22 mm	Ø16 mm	Ø22 mm	Ø22 mm	Ø50 mm	Ø50 mm	Ø41 mm
IP Rating	IP66/67/69K	IP65	IP65	IP65	IP66	IP66	IP65
Voltage range	24 VAC/DC, 110 VAC, 230 VAC	24 VAC/DC, 110 VAC/DC, 220 VAC	12, 24, 110 VAC/DC, 220 VAC, 380 VAC	230 VAC	24 VAC/DC	24 VDC	12-24 VAC/DC
Colours available	Orange, Green, Red, Yellow, Blue, Transparent	Red, Green, Yellow, Blue, White	Red, Green, Yellow, Blue, White, Amber	Red, Green, Yellow, Blue, White, Amber	Amber, Red, Green	White, Amber, Red, Yellow, Green, Magenta, Blue	Amber, Red, Green
Special features	High brightness	High brightness	High brightness	Anti-interference circuit (<i>prevents false illumination</i>)	Selectable effects (<i>steady, strobe, flash, etc.</i>)	Steady light with selectable colours	Selectable effects (<i>steady, flashing, strobe</i>)
Catalogue page	D-9	D-13	D-13	D-14	Available on request		D-19

LADY Series - Standard Executions



Lady series - Pendant control stations

LADY Series single-row push-button stations are mainly used in the industrial lifting - in order to control cranes, bridge cranes, hoists and winches - or in numerous industrial applications when indoor or outdoor handling of machinery or goods is required.

LADY push-buttons station is available in 8 sizes, ranging from 2 to 12 buttons standard or customized versions, various controls and switches can be mounted on each type upon request. The emergency stop push-button has been designed according to EN 13850. The NC contacts feature guaranteed opening (EN 60947-5-1) and can be supplied in the 2NC increased safety version as well.

All buttons are marked with international symbols. The switches have self-cleaning sliding contacts in silver alloy. A range of peculiar accessories is available to complete the feasible versions in order to meet all the clients' security and operation requirements.

- Weather resistant materials with guaranteed protection against penetration of water and dust
- A mechanical interlock for opposite movements is provided as standard.
- Operational ambient temperature limits: $-40^{\circ}\text{C} \sim +70^{\circ}\text{C}$
- Protection degree: IP65
- Mechanical life: 10x106 operations
- Insulation category: Class II (double insulation)
- Conformity to standards: EN 60947-1 EN 60947-5-1 EN 60529 EN 60204-1 EN60204-32 EN 13850

type	no. of ways	description	reset/ alarm NO	Mushroom E/stop NC	1 speed button NO	2 speed button NO+NO
------	-------------	-------------	-----------------------	--------------------------	-------------------------	----------------------------

LADY series single row pendant control station (IP66)

DLAP2A	2-way	pendant station
DLAP3A	3-way	pendant station
DLAP3B	3-way	pendant station
DLAP4A	4-way	pendant station
DLAP5A	5-way	pendant station
DLAP6A	6-way	pendant station
DLAP8A	8-way	pendant station

—	—	2	—
—	1	2	—
—	1	1	1
—	1	3	—
1	1	2	2
1	1	2	2
1	1	2	4

Accessories for LADY pendants stations (above)

(W) 84.5 x (D) 59.5 x (H) mm

MK push-button is an essential element of the LADY pendant stations. The case is made of nylon glass, while self-cleaning sliding contacts are in silver alloy and screws and springs are made of stainless steel

- Nominal thermal current: 10 A
- Maximum connection: $2 \times 1.5 \text{ mm}^2 \text{ o } 1 \times 2.5 \text{ mm}^2$

Contact blocks for above LADY pendant stations

D MK10	MK	switching element	1NO
D MK01	MK	switching element	1NC
D MK11	MK	switching element (<i>combined dual-contact</i>)	1NO + 1NC
D MK20CC	MK	switching element (<i>simultaneous</i>)	2NO
D MK20PR	MK	switching element (<i>progressive / two-speed</i>)	2NO
D MK02CC	MK	switching element (<i>simultaneous</i>)	2NC

Actuators for above LADY pendant stations

DLALS	(0-1)	actuator	lever selector
DLALS3	(0-1-2)	actuator	lever selector
DLACL	—	gasket	closure element + rubber gasket
D PKBLMEC	—	Interlock	mechanical Interlock
D LAGAN	—	hanger	suspension hanger

Standard push-buttons with international symbols

type	background colour	symbol	description
D LAS 01	white	⬆	(up arrow) symbol disc insert for control stations
D LAS 02	black	⬇	(Down arrow) symbol disc insert for control stations
D LAS 11	white	⬆⬆	(2 vertical arrows) symbol disc insert for control stations
D LAS 12	black	⬆⬆	(Two horizontal arrows) symbol disc insert for control stations
D LAS 21	white	⬆	Triangle up symbol disc insert for control stations
D LAS 22	black	⬇	Triangle down symbol disc insert for control stations
D LAS 30	green	⬆	Green circle or "I" symbol disc insert for control stations
D LAS 34	red	⬆	red circle (E-Stop) symbol disc insert for control stations



Wormgear limit switches

FRD rotary limit switch is a device used to safely control the motion of construction and industrial machinery. Housed in a rugged IP65-rated enclosure, it delivers reliable end-of-travel detection even in the harshest wet or dusty conditions. Its compact footprint fits into tight spaces and supports both horizontal and vertical mounting.

Tool-free, captive-screw cam adjustments guarantee precise trip-point settings, while modular microswitch blocks and interchangeable cams enable rapid on-site servicing and straightforward customisation.

General features:

- Rated operational voltage: 250 VAC
- Operational temperature: -20°C...+60°C
- Protection degree: IP65
- Enclosure: Technopolymer with high mechanical and thermal resistance
- Conformity to standards: CEI EN 60947-1, CEI EN 60947-5-1, CEI EN 60204-1, CEI EN 60529

type	ratio	no. micro's	description
------	-------	-------------	-------------

Wormgear limit switches (IP55)

- Provides straightforward "fail open" safety logic (*each cam trip breaks the circuit*)
- Ideal for customers who need strictly NC solutions to meet local safety codes

FRD series - Wormgear

BFRD017LH4B	1:017	4 × 1NC	FRD miniature wormgear limit switch
BFRD025LH4B	1:025	4 × 1NC	FRD miniature wormgear limit switch
BFRD050LH2B	1:050	2 × 1NC	FRD miniature wormgear limit switch
BFRD050LH4B	1:050	4 × 1NC	FRD miniature wormgear limit switch
BFRD100LH2B	1:100	2 × 1NC	FRD miniature wormgear limit switch

1:200 and other special configurations, available on request

Spares for above FRD series

B52055	yellow		replacement cover
B52038	white	cam A	2-switch snap-in contact block
B52037	grey	cam B	2-switch snap-in contact block
B52016	white	cam A	4-switch snap-in contact block
B52017	grey	cam B	4-switch snap-in contact block
BCAMAFR	white	cam A	insert for standard trip and reset angles
BCAMBFR	grey	cam B	insert for standard trip and reset angles
BFCNAPINT	switch	1NO+1NC	SPDT rapid-action microswitch

PRE series - Slip rings (IP52)

Slip rings are rotary electrical joints that transmit power, signals or data between stationary and rotating machine parts without cable twisting or fatigue.

The PRE Smart offers easy access to its mechanics by opening a section of the external case, reducing servicing and downtimes by periodic checks. Detail innovation and standard or customised versions make the PRE series suitable for all applications requiring high mechanical endurance and protection degree.

Fitted with a open internal hole for liquid tubes, shafts or wires, the PRE Smart is available in modular executions ranging from 20A, 30A to 50A and mixed versions up to 50A for signal transmission. Customised versions with more radial or axial cable entries, signal executions with silvergraphite or "Long Life" brushes are also supplied.

General features:

- Rated operational voltage: 660V AC/DC
- Positioning: Vertical axis with threaded pipe
- Inside passage: 42 mm diameter through steel pipe
(for the passage of hoist cables, fluid cables and piston stems)
- Cable entry: Through M20 cable glands (on the lower and upper flange)
Inside terminal board for rings connection

Conformity to standards: EN 60947-1 EN 60529

Applications: Ideal for rotary equipment across wrapping, bottling, packaging, palletizing, filling, capping, labelling and printing machinery.

type	No. of rings	H (mm)	description
------	--------------	--------	-------------

PRE smart slip rings

GPRE2B4	4 x 20A	230 mm	PRE smart slip ring
GPRE2B8	8 x 20A	260 mm	PRE smart slip ring
GPRE2B12	12 x 20A	290 mm	PRE smart slip ring
GPRE2B20	20 x 20A	350 mm	PRE smart slip ring
GPRE2B24	24 x 20A	380 mm	PRE smart slip ring
GPRE2B32	32 x 20A	440 mm	PRE smart slip ring





Surface-mount signalling devices

ELECTRA | **CE** **UK** **CA**

Multifunctional technology, permitting different selectable signalling levels

Luminous devices engineered for industrial applications on machinery.



type	lens colour	dB @ 1 meter	supply voltage	description	dimensions (mm)	
					Ø	ext.

MICROLAMP LED - LED signalling beacon - Surface mount

IP54

- M16 cable gland entry (*gland supplied*)
- 2 light effects: Steady - flashing (selectable via terminals)
- LED flash rate: 140fpm \pm 10%
- Construction: Polycarbonate base and lens
- Luminous intensity (*Candela*): 2 cd max

LED signalling beacon

38602	amber	—	12 - 24 VAC/DC	surface mnt signalling device	86	90
38603	red	—	12 - 24 VAC/DC	surface mnt signalling device	86	90
38604	green	—	12 - 24 VAC/DC	surface mnt signalling device	86	90
38622	amber	—	90 - 240 VAC	surface mnt signalling device	86	90
38623	red	—	90 - 240 VAC	surface mnt signalling device	86	90
38624	green	—	90 - 240 VAC	surface mnt signalling device	86	90

MICROLAMP LED and ACOUSTIC - signalling beacon

IP30

- Tone: 2700Hz
- Audible signal option with continuous or intermittent sound.
- 2 alarm levels: Continuous sound with steady light / intermittent sound with flashing light
- Luminous intensity (*Candela*): 2 cd max

LED and acoustic signalling beacon

38632	amber	72	12 - 24 VAC/DC	surface mnt signalling device	86	111
38633	red	72	12 - 24 VAC/DC	surface mnt signalling device	86	111
38634	green	72	12 - 24 VAC/DC	surface mnt signalling device	86	111
38652	amber	72	90 - 240 VAC	surface mnt signalling device	86	111
38653	red	72	90 - 240 VAC	surface mnt signalling device	86	111
38654	green	72	90 - 240 VAC	surface mnt signalling device	86	111

Other colours available on request

OVOLUX LED - Multifunctional LED signalling beacon

IP66

- Bright LED with maximised performance
- "R" panel-mount (through 1/2" NPT hole) or "M" surface mounting
- 4 light effects: Steady - single - double - triple flash - (*selectable via dip-switches*)
- Luminous intensity (*Candela*): 35 cd max

Panel-mount "R" version mounts through 1/2" NPT (22 mm) hole with (provided) lock ring

38782	amber	—	12 - 24 VAC/DC	panel-mount signalling device	76	69
38783	red	—	12 - 24 VAC/DC	panel-mount signalling device	76	69
38784	green	—	12 - 24 VAC/DC	panel-mount signalling device	76	69
38792	amber	—	90 - 240 VAC	panel-mount signalling device	76	69
38793	red	—	90 - 240 VAC	panel-mount signalling device	76	69
38794	green	—	90 - 240 VAC	panel-mount signalling device	76	69

Surface mount "M" version M16 cable gland entry

(IP65)

38802	amber	—	12 - 24 VAC/DC	surface mount signalling device	114	115
38803	red	—	12 - 24 VAC/DC	surface mount signalling device	114	115
38804	green	—	12 - 24 VAC/DC	surface mount signalling device	114	115
38812	amber	—	90 - 240 VAC	surface mount signalling device	114	115
38813	red	—	90 - 240 VAC	surface mount signalling device	114	115
38814	green	—	90 - 240 VAC	surface mount signalling device	114	115

Other colours available on request

OVOLUX RGB - multicolour steady light - LED beacon

- Multi-coloured: White, amber, red, yellow, green, magenta, blue (7 colours in one beacon)
- Luminous intensity (*Candela*): 10 cd max

30107	multi	—	12 - 24 VAC/DC	panel-mount signalling device	76	69
30108	multi	—	90 - 240 VAC	panel-mount signalling device	76	69

Mounting accessories (for above panel-mount beacons)

27697	adaptor	for mounting Ovolux beacons onto a foot or wall mount base				
27762	wall	wall mounting bracket for Ovolux (<i>requires 27697 adaptor</i>)				
27764	base	surface mount base with extended foot (100 mm) (<i>requires 27697 adaptor</i>)				

ELECTRA | CE UK CA



66502



66513



66554



38662



90063

Multifunctional technology permitting different selectable signalling levels

type	lens colour	supply voltage	description	dimensions (mm)	
				Ø	ext.

MINIFLASH LED medium size multifunctional beacons

IP54

Medium-size multifunctional LED beacon, developed with a multichannel technology. MINIFLASH LED is available in **MINIFLASH FLR** (steady, flashing, rotating light) or in **MINIFLASH SLR** (flashing, strobe, random light) version.

- Surface mounting with M16 cable gland entry (cable gland supplied)
- Dome-shaped Fresnel lens intensifies the luminous beam of these devices
- 3 x lighting effects controllable via independent electric contacts

MINIFLASH LED FLR

- LEDs allows a rotating effect perfectly simulating traditional rotating beacon without moving parts
- 32x bright LEDs
- Luminous intensity (Candela): 50 cd max
- Three luminous effects: Steady light / Flashing light / Rotating light

66502	amber	12 - 24 VAC/DC	multifunctional LED beacon	99	146
66503	red	12 - 24 VAC/DC	multifunctional LED beacon	99	146
66504	green	12 - 24 VAC/DC	multifunctional LED beacon	99	146
66512	amber	90 - 240 VAC	multifunctional LED beacon	99	146
66513	red	90 - 240 VAC	multifunctional LED beacon	99	146
66514	green	90 - 240 VAC	multifunctional LED beacon	99	146

MINIFLASH LED SLR

- SuperBright LEDs unique uneven flashing pattern designed for attracting attention
- Luminous intensity (Candela): 230 cd max
- Three luminous effects: Flashing light 1F / Strobe effect 5F / Random lighting effect

66542	amber	12 - 24 VAC/DC	multifunctional LED beacon	99	146
66543	red	12 - 24 VAC/DC	multifunctional LED beacon	99	146
66544	green	12 - 24 VAC/DC	multifunctional LED beacon	99	146
66552	amber	90 - 240 VAC	multifunctional LED beacon	99	146
66553	red	90 - 240 VAC	multifunctional LED beacon	99	146
66554	green	90 - 240 VAC	multifunctional LED beacon	99	146

Other colours available on request

Mounting accessories

72692	grey	wall mounting bracket for above MINIFLASH beacons
-------	------	---

CTL600 LED beacon

IP65

Lighting effect: Steady / Flashing

LED signalling beacon

38662	amber	12 - 24 VAC/DC	multifunctional LED beacon	73.5	74.5
38663	red	12 - 24 VAC/DC	multifunctional LED beacon	73.5	74.5
38664	green	12 - 24 VAC/DC	multifunctional LED beacon	73.5	74.5

ROTALLARM S LED multifunctional beacon

IP65

ROTALLARM S LED features a powerful multivoltage/multifunction SMD LED electronic circuit offering outstanding performances together with the highest life expectancy in today's market. The structure guarantees high impact and vibration resistance.

- PC/ABS base with M20 cable gland, self-extinguishing polycarbonate dome
- 32 x 5050 bright LEDs for improved visibility
- Luminous intensity (Candela): 40 cd max
- Lighting effect: Steady / Rotating / Flashing

LED rotating signalling beacons (H) 212 x Ø 142 mm

90061	blue	12 - 24 VAC/DC	multifunctional LED beacon	142	212
90062	amber	12 - 24 VAC/DC	multifunctional LED beacon	142	212
90063	red	12 - 24 VAC/DC	multifunctional LED beacon	142	212
90064	green	12 - 24 VAC/DC	multifunctional LED beacon	142	212
90081	blue	90 - 240 VAC	multifunctional LED beacon	142	212
90082	amber	90 - 240 VAC	multifunctional LED beacon	142	212
90083	red	90 - 240 VAC	multifunctional LED beacon	142	212
90084	green	90 - 240 VAC	multifunctional LED beacon	142	212

Other colours available on request

Mounting accessories

72692	grey	wall mounting bracket for above ROTALLARM beacons
-------	------	---

ELECTRA | **CE** **UK** **CA**



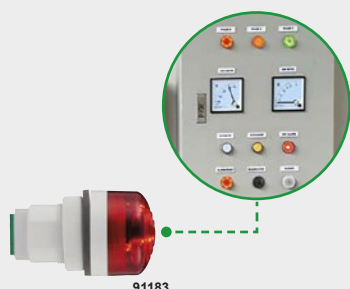
91153



91132



91177



91183

P40 - Multifunctional LED signalling panel beacon Ø41 mm

P40 is a multifunctional LED beacon developed with a multichannel technology. P40 allows three different levels of alarm (*steady, flashing, strobe light effect*) controllable via independent electric contacts

General information:

- Screw terminal connection
- Mounts through Ø30 mm hole - (*internal depth max. 37 mm*)
- IP rating: IP66, UL TYPE 4X
- Operating temperature: -30/+60 °C
- Material: Self-extinguishing polycarbonate body and dome with high impact resistance

Light features:

- 4 high brightness LEDs. A lens positioned on the upper part of the device improves its frontal performance
- Light-diffusion through a light-concentrating lens for maximize frontal performance

type	lens colour	dB @ 1 meter	supply voltage	description	dimensions (mm)	
					Ø	ext.

P40 S - Multifunctional LED signalling panel beacon Ø41 mm

3 alarm levels:

- steady
- flashing
- strobe (*selectable via electrical contacts*)

- Luminous intensity (*Candela*): 20 cd max

LED signalling beacon

91132	amber	—	12 - 24 VAC/DC	panel-mount signalling device	41	46
91133	red	—	12 - 24 VAC/DC	panel-mount signalling device	41	46
91134	green	—	12 - 24 VAC/DC	panel-mount signalling device	41	46
91152	amber	—	48 - 240 VAC	panel-mount signalling device	41	46
91153	red	—	48 - 240 VAC	panel-mount signalling device	41	46
91154	green	—	48 - 240 VAC	panel-mount signalling device	41	46

P40 A - Piezoelectric acoustic sounder - selectable continuous - intermittent sound

Piezoelectric sounder developed with a multichannel technology. P40 A allows two different levels of alarm (*pre-alarm, alarm*) controllable via independent electric contacts.

91177	grey	85dB	12 - 24 VAC/DC	panel-mount audible sounder	41	34
91179	grey	85dB	48 - 240 VAC	panel-mount audible sounder	41	34

P40 A LED - Combination sounder and signal beacon

Piezoelectric sounder with LED light, developed with a multichannel technology. P40 A LED allows levels of alarm (*alert, pre-alarm, alarm*) controllable via independent electric contacts.

3 alarm levels:

- flashing only
- flashing + intermittent sound
- steady light + continuous sound

- Luminous intensity (*Candela*): 20 cd max

LED sounder and signalling beacon

91182	amber	85dB	12 - 24 VAC/DC	panel-mount sounder/beacon	41	34
91183	red	85dB	12 - 24 VAC/DC	panel-mount sounder/beacon	41	34
91202	amber	85dB	48 - 240 VAC	panel-mount sounder/beacon	41	34
91203	red	85dB	48 - 240 VAC	panel-mount sounder/beacon	41	34

Other colours available on request

Panel-mount - Signalling devices

- A wide range of products for **acoustic** or **luminous** signalling in control panels.

LUMINOUS

P40 S

LED light device with 3 light effects



DOME ●●●●●○
BODY ●●



ACOUSTIC

P40 A

Multi-function piezoelectric buzzer with 2 sounds available



BODY ●●

ACOUSTIC / LUMINOUS

P40 A LED

Piezo-electric buzzer with LED light, 7 light/sound combinations selectable

DOME ●●●●●○
BODY ●



WORKPLUS



54215



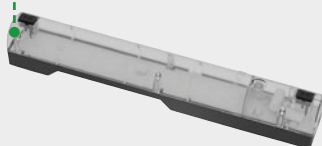
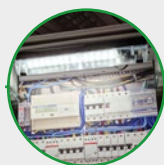
54206



74753



74755



32603



99002

Electromechanical bells

SIAD 165 electromechanical industrial bell with reinforced base with diameter 165 mm. Developed with acoustic electromagnetic unit with vibrating piston, the device generates a characteristic continuous sound.

The rugged steel structure of the bell provides high impact resistance and excellent protection against dust and water (IP66), suitable also for heavy duty applications.

General features:

- Operating temperature range: -30°C to +50°C
- IP66-rated, impact-resistant design: Reinforced steel bell with a polyamide mounting flange
- Flexible voltage options. DC versions: 12 - 240 VDC $\pm 10\%$; AC versions: 12 - 240 VAC $\pm 10\%$ (50/60 Hz)

SIAD 165 - Industrial electromechanical bells

IP66

type	supply voltage	colour	dB @ 1m	IP rating	description
------	----------------	--------	---------	-----------	-------------

Electromechanical bells

54215	24 VDC	red	100	IP66	electromechanical bell
54222	24 VDC	grey	100	IP66	electromechanical bell
54206	240 VAC	red	100	IP66	electromechanical bell
54213	240 VAC	grey	100	IP66	electromechanical bell

SOS light – Temporary portable emergency LED beacon

IP54

Maintenance is essential for preventing hazards, but it is itself a high-risk, non-routine activity often carried out under exceptional conditions. The portable, rechargeable SOS LIGHT beacon provides clear, robust signalling maintenance or repair operations, ensuring the operator's safety.

SOS LIGHT range comprises portable, rechargeable LED beacons with a magnetic base, designed for temporary signalling during maintenance operations. Robust yet lightweight, they offer multiple light modes and extended battery life for reliable use in industrial settings.

Key features:

- 1000mAh 3.6V Li-ion rechargeable battery
- Autonomy: 13 hours (with LOW intensity) - 2.5 hours (with HIGH intensity)
- Equipped with a battery that can be recharged via a USB type C cable.

General applications:

- Temporary signalling during maintenance operation
- Temporary signalling of obstacles or inaccessible areas
- Temporary signalling of moving loads

type	colour	rechargeable voltage	description	dimensions Ø	ext
------	--------	----------------------	-------------	-----------------	-----

LED emergency beacon

74751	amber	5 VDC	portable emergency LED beacon	92	60
74752	red	5 VDC	portable emergency LED beacon	92	60
74753	green	5 VDC	portable emergency LED beacon	92	60
74756	white	5 VDC	portable emergency LED beacon	92	60
74755	red	5 VDC	cross portable emergency LED beacon	92	60

LPL900 - LED panel lamps

IP20

LPL LED panel light range were developed to provide optimal lighting inside electrical control, command and distribution panels.

LPL panel lamps can be positioned, within the control cabinet, directly on a ferromagnetic surface by means of its magnetic base, or on other surfaces by means of a screwed-on magnetic support (supplied with the product).

type	lumens	supply voltage	description	dimensions (H)	(W)	(D)
------	--------	----------------	-------------	-------------------	-----	-----

LED panel lamp

32601	900	12/24 VAC-12/48 VDC	LED panel lamp	314.1	61.9	59.7
32603	900	12/24 VAC-12/48 VDC	as above with sensor	314.1	61.9	59.7

Lumina - Wearable safety device

IP67

LUMINA is a wearable safety device designed to make operators visible, minimizing risks in conditions of poor visibility. With its compact design and sturdy polyamide construction, Lumina features IP67 resistance to water and dust.

- 12 powerful LEDs provide full 360-degree illumination
- Powerful magnet located at the base allows it to be easily applied to any magnetic surface.
- 1000 mAh - 3.7V lithium-ion battery allows up to 5 hours of continuous use

Safety lamp

99002	amber/white	5 VDC	LED safety lamp with magnetic clip	66	66	27
-------	-------------	-------	------------------------------------	----	----	----



LED signalling devices

MLINE |



90823 + 90367



90504 + 90367



90351 + 90368



90363 + 90343



90362 + 90368

MLINE - Multivoltage - Multifunction - Modular - Multichannel

MLINE is a unique, flexible, modular concept permitting different audio and signalling devices to be combined with facilities to mount them in the most practical way.

Different **DOMES** (*audio, visual or both*) can be mounted on any of six different **BASES** which determines the supply voltage of the unit - **12 - 24 VAC/DC** or **120 - 240 VAC**

- LED technology - zero maintenance built-in LED guaranteeing up to 100.000 hours of productive life

DOMES - beacons/sounders or combinations of both - require **BASES** (*see overleaf*) to complete device

type	lens colour	dB @ 1meter	description	dimensions Ø H	
------	-------------	-------------	-------------	-------------------	--

XLF S - Low profile beacon multifunctional LED signalling IP66

- Selectable light effects:**
- Steady light
 - Flashing (*single-flash 1F*)
 - Strobe effect (*5x flash*)
 - Random light effect

Adjustable brightness (3 levels)

- Luminous intensity (*Candela*): 4200 cd max

Directional - Fresnel lens - (for long distance signalisation)

90821	blue	—	multifunctional low-profile LED beacon	92	42.5
90822	amber	—	multifunctional low-profile LED beacon	92	42.5
90823	red	—	multifunctional low-profile LED beacon	92	42.5
90824	green	—	multifunctional low-profile LED beacon	92	42.5
90826	clear	—	multifunctional low-profile LED beacon	92	42.5

Multi-coloured red, green, blue, amber, yellow, cyan, violet, white selectable on one unit

90156	multi	(85 cd)	multifunction/colour low profile beacon	92	42.5
-------	-------	---------	---	----	------

- Luminous intensity (*Candela*): 25 cd max

Proximity - Opaline lens - (for close proximity signalisation)

90501	blue	—	multifunctional low profile LED beacon	92	42.5
90502	amber	—	multifunctional low profile LED beacon	92	42.5
90503	red	—	multifunctional low profile LED beacon	92	42.5
90504	green	—	multifunctional low profile LED beacon	92	42.5

FLR S - Tall beacon high optical performance LED signalling IP66

- 24 bright LEDs permit 3 selectable luminous effects
- Luminous intensity (*Candela*): 455 cd max

- Selectable light effects:**
- Steady light
 - Flashing (*triple flash strobe effect*)
 - Rotating light (*simulates traditional rotating beacon*)

LED signalling beacons

90351	blue	—	multifunctional tall LED beacon	92	108
90352	amber	—	multifunctional tall LED beacon	92	108
90353	red	—	multifunctional tall LED beacon	92	108
90354	green	—	multifunctional tall LED beacon	92	108

SIR-E Multi-functional electronic sounders IP65

- High acoustic performance - adjustable volume
- Multi-tone 64 different sounds available (*selectable via internal dip switches*)
- Two separate functions: pre-alarm - alarm (*controllable via separate electric contacts*)

SIR-E S - Multi-functional electronic sounder

90360	grey	105 dB	multifunction sounder (64 sounds)	92	62
90358	red	105 dB	multifunction sounder (64 sounds)	92	62

SIR-E LED S - Combination beacon and sounder

- Selectable light effects - steady or strobe light effect
- Multi-tone 64 different sounds available (*selectable via internal dip switches*)

90362	amber	105 dB	beacon and sounder (64 sounds)	92	62
90363	red	105 dB	beacon and sounder (64 sounds)	92	62
90361	blue	105 dB	beacon and sounder (64 sounds)	92	62
90364	green	105 dB	beacon and sounder (64 sounds)	92	62

SIR-E LED MAX - Combination beacon and high output sounder

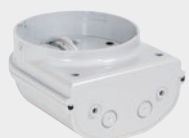
90561	blue	115 dB	beacon and sounder (64 sounds)	92	88
90563	red	115 dB	beacon and sounder (64 sounds)	92	88



90367



90368



90370



90512



90352 + 90367 + 90553

BASES - for MLINE beacons or sounders or combinations of both, provide a number of mounting options. On any of six different **BASES** which determine the supply voltage of the unit 12 - 24 VAC/DC or 120 - 240 VAC

type	lens colour		supply voltage	description	dimensions (mm)	
					Ø	height
SHALLOW compact low profile surface mount bottom cable entry						
90367	grey	LT	12-24 VAC/DC	shallow base for MLine domes	92	21
90343	red	LT	12-24 VAC/DC	shallow base for MLine domes	92	21
90344	white	LT	12-24 VAC/DC	shallow base for MLine domes	92	21
DEEP surface mount base with 2 x M20 side knockouts and compression glands						
90368	grey	LT	12 - 24 VAC/DC	deep base for MLine domes	92	46
90345	red	LT	12 - 24 VAC/DC	deep base for MLine domes	92	46
90346	white	LT	12 - 24 VAC/DC	deep base for MLine domes	92	46
90432	grey	LT	40 - 80 VAC/DC	deep base for MLine domes	92	46
90369	grey	HT	120 - 240 VAC	deep base for MLine domes	92	46
90508	red	HT	90 - 240 VAC	deep base for MLine domes	92	46
90509	white	HT	90 - 240 VAC	deep base for MLine domes	92	46
WALL lateral wall mount base with 2 x M20 knockouts						
90370	grey	LT	12 - 24 VAC/DC	wall base for MLine domes	115	61
90347	red	LT	12 - 24 VAC/DC	wall base for MLine domes	115	61
90348	white	LT	12 - 24 VAC/DC	wall base for MLine domes	115	61
90510	red	HT	90 - 240 VAC/DC	wall base for MLine domes	115	61
90511	white	HT	90 - 240 VAC/DC	wall base for MLine domes	115	61
90371	grey	HT	120 - 240 VAC	wall base for MLine domes	115	61
POLE pole mount base for 1.5" NPT threaded pole						
90610	grey	LT	12 - 24 VAC/DC	pole mnt base for MLine domes	92	66
90612	grey	HT	120 - 240 VAC	pole mnt base for MLine domes	92	66
FLUSH flush mount base for applications requiring low visual, discrete aesthetics						
90375	white	LT	12 - 24 VAC/DC	flush base for MLine domes	146	71
90376	white	HT	120- 240 VAC	flush base for MLine domes	146	71
DOUBLE wall mount base accommodates 2 x warning and/or signalling devices						
90372	grey	LT	12 - 24 VAC/DC	double base for MLine domes	120	97
90373	red	LT	12 - 24 VAC/DC	double base for MLine domes	120	97
90374	white	LT	12 - 24 VAC/DC	double base for MLine domes	120	97
90513	red	HT	90 - 240 VAC/DC	double base for MLine domes	120	97
90514	white	HT	90 - 240 VAC/DC	double base for MLine domes	120	97
90512	grey	HT	120 - 240 VAC	double base for MLine domes	120	97

* Junior economical base only permits one function to be selected

Stainless steel protection grids (heavy duty) for MLINE beacons and sounders

type	size		SHALLOW Base	DEEP Base
			12 - 24 VAC/DC	12 - 24 VAC/DC - 120 - 240 VAC
90557	size 0	for	XLF S/RGA	—
90551	size 1	for	SIR-E / SIR-E LED	XLF S/RGA
90552	size 2	for	SIR-E MAX/ SIR-E LED MAX	SIR-E / SIR-E LED
90553	size 3	for	FLR / SLR	SIR-E MAX/ SIR-E LED MAX
90554	size 4	for	—	FLR S / SLR S

MLINE Bases - Mounting options

BODY ☐ ☒ ☐ ☐



SHALLOW
Shallow base for surface mounting



DEEP
Surface mount base



WALL
Base for wall mounting



POLE
Threaded pole installation



FLUSH
Flush-mounted base



DOUBLE
Double wall-mounting base

AUTOMAX TWS | CE UK



TWS signal tower offers a choice of modules, colours and lenses to meet every signalling need in any bright environments conditions or distance from the operator.

Up to 5 light modules or 4 light modules plus 1 x acoustic module can be combined with various colours permitting a number of signalling functions with multiple installation mounting options.

type	colour	dB @ 1m max	supply voltage	description
------	--------	----------------	-------------------	-------------

TWS SMD series - LED signal towers Ø70 mm IP66

- Low power consumption, high vibration resistance, 100.000 hour lifetime
- Multi-functionality, excellent optical definition, improved light output (12 LEDs)

TWS BASE - Wiring base + top cover for TWS towers

(H) 48 mm

27690*	black	—		wiring base + top cover for above TWS towers
--------	-------	---	--	--

* Essential for assembly of TWS tower

TWS LED MULTI - integrated LED light module

(H) 59 mm

- 4 light functions (selectable by dip switch on each module)

steady - single flash - double flash - triple flash

36711	blue	—	24 VAC/DC	multi-functional LED light module
36712	amber	—	24 VAC/DC	multi-functional LED light module
36713	red	—	24 VAC/DC	multi-functional LED light module
36714	green	—	24 VAC/DC	multi-functional LED light module
36715	yellow	—	24 VAC/DC	multi-functional LED light module
36716	white	—	24 VAC/DC	multi-functional LED light module
36731	blue	—	240 VAC	multi-functional LED light module
36732	amber	—	240 VAC	multi-functional LED light module
36733	red	—	240 VAC	multi-functional LED light module
36734	green	—	240 VAC	multi-functional LED light module
36735	yellow	—	240 VAC	multi-functional LED light module
36736	white	—	240 VAC	multi-functional LED light module

Acoustic module for above TWS towers

IP54

(H) 104 mm

TWS PZO - Piezoelectric sounder (6 tones selectable via internal dip-switch)

27625	black	85 dB	12 - 48 VAC/DC	acoustic module (6 sounds)
27628	black	85 dB	110 - 240 VAC	acoustic module (6 sounds)

TWS MDA - magneto-dynamic sounder (32 tones selectable via internal dip-switch)

27794	black	105 dB	12 - 24 VAC/DC	acoustic module (32 sounds)
27797	black	105 dB	240 VAC	acoustic module (32 sounds)
33402	black	95 dB	12-24 VAC/DC	IP65 acoustic module (16 sounds)
33403	black	95 dB	110/240 VAC	IP65 acoustic module (16 sounds)

Accessories for TWS towers

27691	BS	mount		mounting foot for TWS (Ø 88 mm)
27692	PR	ext.		100 mm extension stem for TWS towers
27693	BP1	bracket		wall mounting bracket for TWS towers
27695	BS	ext		100 mm extension foot for TWS towers
27763	BP2	double		wall mount bracket (double entry) for TWS towers
27777	M16	—		mounting foot with junction box for TWS towers

Acoustic and visual - Signalling devices



Signal towers are an essential device in production process control and industrial automation.

Benefits:

- Increase operator safety
- Increase efficiency and productivity
- Reduce inefficiencies and machine downtimes/stops



Dimensions

STANDARD	Ø 70mm
MINI*	Ø 50mm
BABY*	Ø 36mm

* Available on request

AUTOMAX ELYPS | CE UK



ELYPS signal tower/stack light system features modules which plug-in to each other to form specific functions. Unique oval shape (50 - 70 mm) diameter variance depending on the viewing angle. Latest generation LED technology for highly effective indication with exceptional life (+100.000 hours)

- Supply voltage 12/24 VDC or 120 - 240 VAC/DC (*determined by the wiring module*)
- IP65 protection (*suitable for indoor or outdoor use*)
- Light modules configurable for "steady" or various modes of "flashing"

Modular stack lights - made up of four groups of modules

- Mounting base - Wiring module - Light modules - Acoustic modules

type	colour	supply voltage	mode	description
------	--------	----------------	------	-------------

ELYPS WM Wiring modules *for all common wiring (determines supply voltage)*

- Permits connection of up to 7 modules - steady, flashing or sound
- Supply voltage of the system is determined by the wiring module

LT	12 - 24 VDC	modules (<i>direct connected</i>)
HT	120 - 240 VAC/DC	modules (<i>with built-in 12/24V transformer</i>)

WM - wiring module - basic type without built-in flashing facility

32458	black	LT	12 - 24 VAC/DC	steady	standard wiring module/base
32321	black	HT	120 - 240 VAC	steady	standard wiring module/base

WM - MULTI wiring module - with built-in flashing facility

- Multi-functional flashing facility of each connected independent light module
- Configurable for "steady" or Single flash - Double flash - Triple flash - Strobe mode

32468	black	LT	12 - 24 VAC/DC	flashing	multi LT wiring module/base
32327	black	HT	120 - 240 VAC	flashing	multi LT wiring module/base

ELYPS Light modules *steady light or individual selectable flashing*

LM light module - economic, entry-level LED light module with steady light

32331	blue	WM LT wiring module (24 VAC/DC only)	steady	plug-in steady light module
32332	amber		steady	plug-in steady light module
32333	red		steady	plug-in steady light module
32334	green		steady	plug-in steady light module
32335	yellow		steady	plug-in steady light module
32336	white		steady	plug-in steady light module

LM S - MULTI light modules - multifunctional 4 selectable light effects (*via dip-switches*)

- 2x FLASH - 3x FLASH - 5x FLASH - RANDOM (*uneven flashing pattern*)

32391	blue	according to selected wiring module	flashing	plug-in multi-light module
32392	amber		flashing	plug-in multi-light module
32393	red		flashing	plug-in multi-light module
32394	green		flashing	plug-in multi-light module
32395	yellow		flashing	plug-in multi-light module
32396	white		flashing	plug-in multi-light module

LM X - MULTI light modules - superbright multi-functional LED light module

- With superbright LED simulating traditional Xenon discharge lamps

32381	blue	according to selected wiring module	flashing	plug-in super brite light module
32382	amber		flashing	plug-in super brite light module
32383	red		flashing	plug-in super brite light module
32384	green		flashing	plug-in super brite light module
32385	yellow		flashing	plug-in super brite light module
32386	white		flashing	plug-in super brite light module

LM S - RGB aICLEAR - multifunctional 7 selectable light effects (*via dip-switches*)

32470	RGB	according to selected wiring module	steady	plug-in multi-light module
-------	-----	--	--------	----------------------------

ELYPS Acoustic modules *to add acoustic signalisation to luminous sectors*

AM series Piezoelectric - 2 sound modes (*intermittent or continuous*)

32338	black	acc. to wiring module	87 dB	plug-in acoustic module
-------	-------	-----------------------	-------	-------------------------

AM S series Magneto-dynamic - 16 different sound modes - *adjustable volume 60 - 90 dB*

32348	black	acc. to wiring module	90 dB	plug-in acoustic module
-------	-------	-----------------------	-------	-------------------------

Mounting bases for signal towers

32358	black	foot mounting base	for ELYPS signal towers
32378	black	foot mount base with 10 cm ext.	for ELYPS signal towers
32368	black	wall mounting base	for ELYPS signal towers
32388	black	pole mounting base	for ELYPS signal towers



Industrial sirens

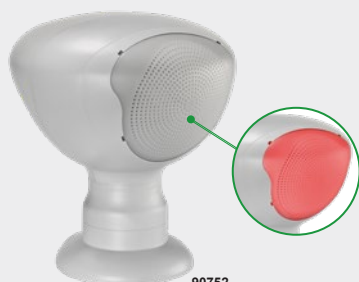
ELECTRA | CE UK CA



42021



42105



90752



22700

NEW

NFC

Industrial motor-driven sirens

type	supply voltage	dB @ 1m	description	IP	run duration on	run duration off	dimensions (Ø)	dimensions (H)
------	----------------	---------	-------------	----	-----------------	------------------	----------------	----------------

CELERE series motor-driven sirens

- Self-extinguishing PC body with high-impact resistance
- Motor protection thermal circuit breaker installed on **CELERE** and **super-CELERE** versions
- Easy installation by means of the integrated fixing bracket - **M12** cable gland

mini-CELERE miniature electro-mechanical siren

42007	24 VDC	101	motor-driven siren	IP43	(continuous)		91	115
42001	24 VAC/DC	101	motor-driven siren	IP43	1 min.	10 min.	91	115
42005	240 VAC/DC	101	motor-driven siren	IP43	1 min.	10 min.	91	115

CELERE mid-sized electro-mechanical siren

42027	24 VDC	110	motor-driven siren	IP43	(continuous)		118	167
42021	24 VAC/DC	110	motor-driven siren	IP43	1 min.	10 min.	118	167
42025	240 VAC/DC	110	motor-driven siren	IP43	1 min.	10 min.	118	167

super-CELERE large-size electro-mechanical siren

42046	12 VDC	114	motor-driven siren	IP43	(continuous)		140	186
42047	24 VAC/DC	114	motor-driven siren	IP43	(continuous)		140	186
42045	240 VAC/DC	114	motor-driven siren	IP43	1 min.	10 min.	140	186

CELEREST large-size electro-mechanical siren

42087	24 VDC	110	motor driven siren	1 min	10 min		180	210
42085	240 VACDC	110	motor driven siren	1 min	10 min		180	210

superCELEREST large-size electro-mechanical siren

42106	12 VDC	112	motor driven siren	1 min	10 min		180	220
42105	240 VACDC	112	motor driven siren	1 min	10 min		180	220

Super loud electronic sirens 120dB IP68, IP69K

- 64 different (programmable) sounds
- 120 dB - super loud - siren (6 programmable volume levels)

SIR-TOUCH - Siren only Unique touch programming connection via **M12 4PIN** connector

90750	24 VDC	120	electronic siren	IP68/69K	(selectable)		180	207
90751	85 - 265 VAC	120	electronic siren	IP68/69K	(selectable)		180	207

SIR-TOUCH LED - Siren and LED beacon (programmable for steady light, flashing light or off)

90752	24 VDC	120	electronic siren	IP68/69K	(selectable)		180	207
90753	85 - 265 VAC	120	electronic siren	IP68/69K	(selectable)		180	207

Accessories - for SIR-TOUCH siren

90754	mount							swivel wall mount bracket for above siren
90755	mount	SE 12						swivel base mount bracket for above siren

SE120 Alarm sounder 120dB (H) 190 x (W) 230 x (D) 190 mm

SE120 is a rugged industrial electronic siren that delivers up to 120 dB. Choose from 64 sound profiles and eight volume levels, all set in seconds with the NFC-enabled MySirena app.

Built-in self-diagnostics flag faults, and a safety-lock base lets technicians service the unit securely—even at height.

General information:

- 64 different sounds (programmable)
- Easy mounting and safe maintenance
- 8 EN54-3 standard sounds >60dB(A) <120dB(A)
- Unique configuration and diagnostics via **NFC** (with App)
- 120 dB - super loud - siren (8 programmable volume levels)
- 30 possible combinations - 67 sounds up to 120dB - 8 sound levels
- NFC technology ensures its easy to connect, configure and check diagnostic

Electronic sirens

22700	24 VDC	120	electronic siren	IP66/69K	(selectable)		190	190
22701	85 - 265 VAC	120	electronic siren	IP66/69K	(selectable)		190	190



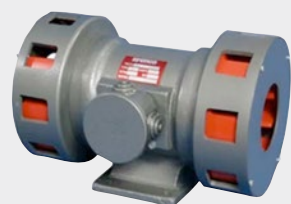
BMMS230



BMDS230



SM15220



SM20220

Mechanical siren

Sirenco is a long-established, ISO-certified manufacturer specialising in audible and visual warning equipment. Its portfolio stretches from compact panel sounders to high-power township sirens, complemented by beacons, combination units and certified explosion-proof devices.

A focus on rugged construction and the ability to customise solutions have enabled the brand to build a global presence across mining, industry, municipal infrastructure and emergency services.

type	supply voltage	dB@ 1m	description	dimensions (mm)		
				(H)	(W)	(D)

Banshee Mono S series - Motorised sirens

IP65

Banshee Mono S is a robust, pressure die cast aluminium siren with a powerful low frequency output. The hammer tone finish, red and black powder coatings are ideal for both indoor and outdoor use. It is fitted with a removable back cover for ease of connection, with two gland entries on the main body of the siren.

General features:

- Duty cycle: Continuous (*Thermal cut-out protected*)
- Sound output: 123dB(A) at 1m
- Sound frequency: 950 - 1200Hz
- Range: 1000m in still air on open field
- Cable entry: 2 x M20
- Operating temperature: -30 to + 45 C

Motorised sirens

BMMS012	12 VAC/DC	123	die cast aluminium siren	125	125	181
BMMS024	24 VAC/DC	123	die cast aluminium siren	125	125	181
BMMS230	230 VAC	123	die cast aluminium siren	125	125	181

Banshee Duplo S series - Motorised sirens

IP65

The Banshee Duplo S is a motor-driven, single-tone siren housed in cast aluminium for outdoor industrial use. Its continuous-duty drive emits a 1600 Hz signal at 127 dB(A) measured 1 m from the horn, delivering reliable site-wide hazard or evacuation alerts in harsh environments.

General features:

- Duty cycle: Continuous (*Thermal cut-out protected*)
- Sound output: 127dB(A) at 1m
- Sound frequency: 1600 Hz
- Range: 1500m
- Cable entry: 3 x M20
- Operating temperature: -30 to + 45 C

Motorised sirens

BMDS230	230 VAC	127	die cast aluminium siren	125	125	213
----------------	---------	-----	--------------------------	-----	-----	-----

SIRENCO 1500S series - Long range sirens

IP55

A weatherproof, rugged cast aluminium siren with a very powerful low frequency output. Ideally suited for factories sirens, refineries, quarries, construction and industrial sites were required, as well as both underground and surface non-fiery mines. Thermal cut out protected.

General features:

- Duty cycle: Continuous (*Thermal cut-out protected*)
- Sound output: 122dB(A) at 1m
- Sound frequency: 1600Hz
- Range: 1500m in still air on open field

Long range sirens

SM15220	220 VAC/DC	122	long range sirens	185	180	230
----------------	------------	-----	-------------------	-----	-----	-----

SIRENCO 2D series - Long range sirens

IP55

Totally enclosed, robust, all weather cast aluminium long range siren with a very powerful low dual frequency output. This design enables the siren to produce a sound output of 2000m in still air on an open field.

Ideally suited for factories sirens, refineries, quarries, construction and industrial sites were required, as well as both underground and surface non-fiery mines. Thermal cut out protected.

General features:

- Duty cycle: Continuous (*Thermal cut-out protected*)
- Sound output: 121dB(A)
- Sound frequency: 370 - 660Hz
- Range: 2000m in still air on open field
- Motor: brush motor with roller bearing - 4000rpm

Long range sirens

SM20220	230 VAC	121	long range sirens	170	175	265
----------------	---------	-----	-------------------	-----	-----	-----



AlertAlarm: High-Performance Industrial Alarm Horn Sounders

The AlertAlarm range offers high-performance industrial alarm solutions engineered for reliability and versatility across diverse environments and applications.

CPR compliant (EN54-3) for EU fire systems and UL approved for general signalling, AlertAlarm boasts global recognition, including certifications such as EAC, VdS, and MED.

General features:

- Supply voltage: 24 VDC and 230 VAC standard (*other voltages available on request*)
- Protection: IP66 (*suitable for indoor or outdoor use*)
- Material: High impact ABS
- Colour: Red RAL3000 (*grey and white available on request*)
- Run duration: Continuously rated
- Tones: 4 stages alarm & 64 selectable tones
- Approvals: EN54 Pt:3 Fire, EN54 part23, SIL2

type	colour	dB @ 1m	supply voltage	description	dimensions (mm) (H) (W) (D)		
AlertAlarm - Alarm sounder					IP66		
A100DC024MA0A1R	—	104	10-30 VDC	alarm sounder	86	86	85
A100AC230MA0A1R	—	104	230 VAC	alarm sounder	86	86	85
A105NDC24AA0A1R	—	112	10-30 VDC	alarm sounder	130	130	134
A105NAC230AA0A1R	—	112	24-260 VAC	alarm sounder	130	130	134
A112NDC024AA0A1R	—	119	10-30 VDC	alarm sounder	168	168	157
A112NAC230AA0A1R	—	119	100-240 VAC	alarm sounder	168	168	157
A121DC024AA0A1R	—	126	10-30 VDC	alarm sounder	190	190	192
A121AC230AA0A1R	—	126	100-240 VAC	alarm sounder	190	190	192

AlertAlight: High - performance industrial visual signals

The AlertAlight range offers high-performance industrial visual signalling solutions engineered for reliability and versatility across diverse environments and applications. CPR compliant (EN54-3 & EN54-23) for use in fire systems within the EU and UL and cULs approved for fire and general signalling duties.

AlertAlight range is globally recognized as the ideal solution for fire, security, process control, and industrial signalling needs.

General features:

- Supply voltage: 24 VDC and 230 VAC standard (*other voltages available on request*)
- Protection: IP66 (*suitable for indoor or outdoor use*)
- Material: High impact ABS
- Colour: Red base RAL3000 (*grey and white available on request*)
- Run duration: Continuously rated
- Mounting: Mounting lugs with 2 x M20
- Approvals: EN54 Pt:3 Fire, EN54 part23

LED beacons

IP66

- Luminous intensity (*Candela*) : 180 cd steady and 113 cd 1Hz flash
- Functions : 7 flash modes plus steady mode

L101HDC024MA0A1R/B	blue	—	10-30 VDC	LED beacon	87	87	93
L101HDC024MA0A1R/A	amber	—	10-30 VDC	LED beacon	87	87	93
L101HDC024MA0A1R/R	red	—	10-30 VDC	LED beacon	87	87	93
L101HDC024MA0A1R/G	green	—	10-30 VDC	LED beacon	87	87	93
L101HAC230MA0A1R/B	blue	—	90-230 VAC	LED beacon	87	87	93
L101HAC230MA0A1R/A	amber	—	90-230 VAC	LED beacon	87	87	93
L101HAC230MA0A1R/R	red	—	90-230 VAC	LED beacon	87	87	93
L101HAC230MA0A1R/G	green	—	90-230 VAC	LED beacon	87	87	93

Other colours available on request.

Xenon strobe beacons

IP66

- Luminous intensity (*Candela*) : 200 cd, **5J (Joule)**
- Functions : 3 selectable flash rates

L101XDC024MA0A1R/B	blue	—	24 VDC	xenon beacon	87	87	93
L101XDC024MA0A1R/A	amber	—	24 VDC	xenon beacon	87	87	93
L101XDC024MA0A1R/R	red	—	24 VDC	xenon beacon	87	87	93
L101XDC024MA0A1R/G	green	—	24 VDC	xenon beacon	87	87	93
L101XAC230MA0A1R/B	blue	—	230 VAC	xenon beacon	87	87	93
L101XAC230MA0A1R/A	amber	—	230 VAC	xenon beacon	87	87	93
L101XAC230MA0A1R/R	red	—	230 VAC	xenon beacon	87	87	93
L101XAC230MA0A1R/G	green	—	230 VAC	xenon beacon	87	87	93

Other colours available on request.



AlertAlight Combination: Industrial Alarm Horn Sounders with Beacons

The AlertAlight Combination range integrates high-performance industrial alarm horn sounders with Xenon strobe beacons or LED beacons, offering a comprehensive signalling solution for industrial applications. CPR compliant (EN54-3 & EN54-23) for use in fire systems within the EU and UL and cULs approved for fire and general signalling duties, the AlertAlight Combination range is globally recognized for its reliability and effectiveness.

- Supply voltage: 24 VDC and 230 VAC standard (*other voltages available on request*)
- Protection: IP66 (*suitable for indoor or outdoor use*)
- Material: High impact ABS
- Colour: Red base RAL3000 (*grey and white available on request*)
- Run duration: Continuously rated
- Approvals: EN54 Pt:3 Fire, EN54 part23, SIL2

type	colour	dB @ 1m	supply voltage	description	dimensions (mm)		
					(H)	(W)	(D)

AlertAlight - combination sounder and beacon

IP66

LED beacons

- Luminous intensity (*Candela*) : 180 cd steady and 113 cd 1Hz flash

AL100HDC024MA0A1R/R	red	104	10-30 VDC	alarm and beacon	87	172	93
AL100HDC024MA0A1R/A	amber	104	10-30 VDC	alarm and beacon	87	172	93
AL100HAC230MA0A1R/R	red	104	48-260 VAC	alarm and beacon	87	172	93
AL100HAC230MA0A1R/A	amber	104	48-260 VAC	alarm and beacon	87	172	93
AL105NHDC024AA0A1R/R	red	112	10-30 VDC	alarm and beacon	130	217	134
AL105NHDC024AA0A1R/A	amber	112	10-30 VDC	alarm and beacon	130	217	134
AL105NHAC230AA0A1R/R	red	112	48-260 VAC	alarm and beacon	130	217	134
AL105NHAC230AA0A1R/A	amber	112	48-260 VAC	alarm and beacon	130	217	134
AL121HAC230AA0A1R/R	red	119	48-260 VAC	alarm and beacon	168	255	157
AL121HAC230AA0A1R/A	amber	119	48-260 VAC	alarm and beacon	168	255	157

Other colours available on request.

Xenon beacons

- Luminous intensity (*Candela*) : 200 cd, **5J (Joule)**

AL100XDC024MA0A1R/R	red	104	10-30 VDC	alarm and beacon	87	172	93
AL100XDC024MA0A1R/A	amber	104	10-30 VDC	alarm and beacon	87	172	93
AL100XAC230MA0A1R/R	red	104	230 VAC	alarm and beacon	87	172	93
AL100XAC230MA0A1R/A	amber	104	230 VAC	alarm and beacon	87	172	93
AL105NXDC024AA0A1R/R	red	112	24 VDC	alarm and beacon	130	217	134
AL105NXDC024AA0A1R/A	amber	112	24 VDC	alarm and beacon	130	217	134
AL105NXAC230AA0A1R/R	red	112	230 VAC	alarm and beacon	130	217	134
AL105NXAC230AA0A1R/A	amber	112	230 VAC	alarm and beacon	130	217	134
AL121XDC024AA0A1R/R	red	119	24 DC	alarm and beacon	168	255	157
AL121XDC024AA0A1R/A	amber	119	24 DC	alarm and beacon	168	255	157

Other colours available on request.

Hootronic - Electronic siren, buzzer, claxon and bell

Next-gen digital signalling reproducing claxon, siren and buzzer sounds with advanced amplifier & digital-to-analog converter (DAC) technology.

- Zero maintenance and consistent performance over the product lifetime
- Replaces legacy electromechanical devices with a cost-effective, reliable alternative

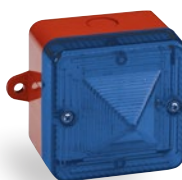
Electronic siren

HMA121DC24G	grey	124	24 VDC	electronic siren	160	220	323.5
HMA121AC115G	grey	124	110 VAC	electronic siren	160	220	323.5
HMA121AC230G	grey	124	230 VAC	electronic siren	160	220	323.5

AlertAlighton - General purpose audible and visual signals

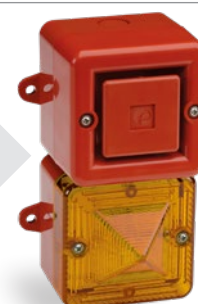


A100
Sounder - 104 - 126 dB



L101HD
Beacons - LED / Xenon

AL121HA
Beacons & Sounder
104-119 db / LED or Xenon





B200LDA230B/R



B200LDA230B/G



B200STR230B/B



B300LDA230B/A



B300RTH230B/R

Spectra: Comprehensive Industrial Signalling Solutions

The Spectra range offers a versatile selection of high-performance industrial signalling solutions, encompassing panel and surface mount beacons in a variety of sizes and technologies.

Featuring Xenon strobe beacons and steady LED array versions, the B200, B300, and B400 series provide adaptable options for operator indication and general signalling needs. Crafted from UV stable, impact-resistant polycarbonate enclosures sealed to IP65, these series offer reliable solutions for applications ranging from process control to machine safety warning and general alert.

- Supply voltage: 24 VDC and 230 VAC standard (*other voltages available on request*)
- Material: High impact UL94 V0 / Colour - black base
- Mounting: Designed for easy panel mounting and flexible surface mounting options

type	lens colour	supply voltage	description	dimensions (mm)	
				Ø	H

B200 - compact beacon

IP65

LED permanent beacon

- Luminous intensity (*Candela*) : 5.5 cd

B200LDA030B/B	blue	10-30 VDC	compact LED beacon	60	80
B200LDA030B/A	amber	10-30 VDC	compact LED beacon	60	80
B200LDA030B/R	red	10-30 VDC	compact LED beacon	60	80
B200LDA030B/G	green	10-30 VDC	compact LED beacon	60	80
B200LDA230B/B	blue	90-230 VAC	compact LED beacon	60	80
B200LDA230B/A	amber	90-230 VAC	compact LED beacon	60	80
B200LDA230B/R	red	90-230 VAC	compact LED beacon	60	80
B200LDA230B/G	green	90-230 VAC	compact LED beacon	60	80

Xenon strobe beacon

- Luminous intensity (*Candela*) : 50 cd, **1J (Joule)**
- Flash frequency : 0.75 Hz

B200STR030B/B	blue	10-30 VDC	xenon strobe beacon	60	80
B200STR030B/A	amber	10-30 VDC	xenon strobe beacon	60	80
B200STR030B/R	red	10-30 VDC	xenon strobe beacon	60	80
B200STR030B/G	green	10-30 VDC	xenon strobe beacon	60	80
B200STR230B/B	blue	230 VAC	xenon strobe beacon	60	80
B200STR230B/A	amber	230 VAC	xenon strobe beacon	60	80
B200STR230B/R	red	230 VAC	xenon strobe beacon	60	80
B200STR230B/G	green	230 VAC	xenon strobe beacon	60	80

B300 - LED and xenon beacon

IP65

LED beacon

- Luminous intensity (*Candela*) : 19 cd
- Selectable light effects : 4 rotating, 4 flashing and steady configurations

B300LDA050B/B	blue	10-50 VDC	multifunction LED beacon	100	150
B300LDA050B/A	amber	10-50 VDC	multifunction LED beacon	100	150
B300LDA050B/R	red	10-50 VDC	multifunction LED beacon	100	150
B300LDA050B/G	green	10-50 VDC	multifunction LED beacon	100	150
B300LDA230B/B	blue	90-230 VAC	multifunction LED beacon	100	150
B300LDA230B/A	amber	90-230 VAC	multifunction LED beacon	100	150
B300LDA230B/R	red	90-230 VAC	multifunction LED beacon	100	150
B300LDA230B/G	green	90-230 VAC	multifunction LED beacon	100	150

Xenon strobe beacon

- Luminous intensity (*Candela*) : 250 cd, **5J (Joule)**
- Flash frequency : 1 Hz

B300STR024B/B	blue	24 VDC	xenon strobe beacon	100	150
B300STR024B/A	amber	24 VDC	xenon strobe beacon	100	150
B300STR024B/R	red	24 VDC	xenon strobe beacon	100	150
B300STR024B/G	green	24 VDC	xenon strobe beacon	100	150
B300STR230B/B	blue	230 VAC	xenon strobe beacon	100	150
B300STR230B/A	amber	230 VAC	xenon strobe beacon	100	150
B300STR230B/R	red	230 VAC	xenon strobe beacon	100	150
B300STR230B/G	green	230 VAC	xenon strobe beacon	100	150

Halogen rotating beacon

- Luminous intensity (*Candela*) : 125 cd

B300RTH024B/A	amber	24 VDC	rotating halogen beacon	100	150
B300RTH024B/R	red	24 VDC	rotating halogen beacon	100	150
B300RTH230B/A	amber	230 VAC	rotating halogen beacon	100	150
B300RTH230B/R	red	230 VAC	rotating halogen beacon	100	150



B400LDA230B/G



B400RTH230B/A



B450TLA230B/G

- B300TMA001

Spectra: Comprehensive Industrial Signalling Solutions

The Spectra range offers a versatile selection of high-performance industrial signalling solutions, encompassing panel and surface mount beacons in a variety of sizes and technologies.

Featuring Xenon strobe beacons and steady LED array versions, the B400 series provide adaptable options for operator indication and general signalling needs. Crafted from UV stable, impact-resistant polycarbonate enclosures sealed to IP65 rating.

type	lens colour	supply voltage	description	dimensions (mm)	
				Ø	H

B400 - LED and xenon beacon

IP65

LED beacon

- Luminous intensity (*Candela*) : 30 cd
- Selectable light effects : 4 rotating, 4 flashing and steady configurations

B400LDA050B/B	blue	10-50 VDC	multifunction LED beacon	140	220
B400LDA050B/A	amber	10-50 VDC	multifunction LED beacon	140	220
B400LDA050B/R	red	10-50 VDC	multifunction LED beacon	140	220
B400LDA050B/G	green	10-50 VDC	multifunction LED beacon	140	220
B400LDA230B/B	blue	90-230 VAC	multifunction LED beacon	140	220
B400LDA230B/A	amber	90-230 VAC	multifunction LED beacon	140	220
B400LDA230B/R	red	90-230 VAC	multifunction LED beacon	140	220
B400LDA230B/G	green	90-230 VAC	multifunction LED beacon	140	220

Xenon strobe beacon

- Luminous intensity (*Candela*) : 750 cd, **5J (Joule)**
- Flash frequency : 1 Hz automatically synchronized

B400STR024B/B	blue	24 VDC	xenon strobe beacon	140	220
B400STR024B/A	amber	24 VDC	xenon strobe beacon	140	220
B400STR024B/R	red	24 VDC	xenon strobe beacon	140	220
B400STR024B/G	green	24 VDC	xenon strobe beacon	140	220
B400STR230B/B	blue	230 VAC	xenon strobe beacon	140	220
B400STR230B/A	amber	230 VAC	xenon strobe beacon	140	220
B400STR230B/R	red	230 VAC	xenon strobe beacon	140	220
B400STR230B/G	green	230 VAC	xenon strobe beacon	140	220

Halogen rotating beacon

- Luminous intensity (*Candela*) : 325 cd

B400RTH024B/A	amber	24 VDC	rotating halogen beacon	140	220
B400RTH024B/R	red	24 VDC	rotating halogen beacon	140	220
B400RTH230B/A	amber	230 VAC	rotating halogen beacon	140	220
B400RTH230B/R	red	230 VAC	rotating halogen beacon	140	220

B450 - LED traffic light indicator

IP65

Spectra range includes traffic light / access control indicators utilizing the latest in LED technology. The UV stable, impact resistant polycarbonate enclosures, sealed to IP65, are ideal for a host of applications such as traffic management, loading bays, fork lift access as well as process control and machine safety warning, status indication, and general alert.

- Bayonet fixing lens, anti-tamper locking screw and Stainless steel fixings
- Luminous intensity (*Candela*) : 54 cd

LED traffic light indicator

B450TLA030B/A	amber	10-30 VDC	LED traffic light indicator	140	177
B450TLA030B/G	green	10-30 VDC	LED traffic light indicator	140	177
B450TLA030B/R	red	10-30 VDC	LED traffic light indicator	140	177
B450TLA030B/B	blue	10-30 VDC	LED traffic light indicator	140	177
B450TLA230B/A	amber	90-230 VAC	LED traffic light indicator	140	177
B450TLA230B/G	green	90-230 VAC	LED traffic light indicator	140	177
B450TLA230B/R	red	90-230 VAC	LED traffic light indicator	140	177
B450TLA230B/B	blue	90-230 VAC	LED traffic light indicator	140	177

Accessories - for Spectra beacons

B200RAB001		right angle bracket for wall mounting	B200
B300RAB001		right angle bracket for wall mounting	B300
B400RAB001		right angle bracket for wall mounting	B400
B200TMA001		pole mounting assembly (140 mm)	B200
B300TMA001		pole mounting assembly (140 mm)	B300
B400TMA001		pole mounting assembly (140 mm)	B400
BJC20W24VCL	24 VDC	xenon light bulb	B300
BJCD25W230VCL	230 VAC	xenon light bulb	B300
BJC35W24VCL	24 VDC	xenon light bulb	B400
BJCD40W230VCL	230 VAC	xenon light bulb	B400



CN41/D/RN



YA40/N/RN/WR



YA50/N/RF/WR



FL40/D50/A/RN



Audible signals - Electronic sounders

Clifford & Snell, established in 1929, is a global leader in audible and visual signalling solutions, offering a comprehensive range of industrial and hazardous area sounders, beacons, and combination units.

The YODALARM series offers a range of electronic sounders with 32 selectable tones, meeting international standards. Designed for industrial, commercial, and maritime use (MED & MER approved), these sounders provide loud, clear alerts that penetrate ambient noise in demanding environments.

- Operating voltage: 24 VDC & 230 VAC standard (*other voltages available on request*)
- Material: ABS Flame Retardant
- Colour: Red or White (*For YA40 only - Change RN for WN in part number*)
- Tones: 2 stages alarm & 32 selectable tones
- Approvals: EN54-3

type	model number	dB@ 1m	operating voltage	description	dimensions (mm)		
					(H)	(W)	(D)

CARLILON - Audible signal - Industrial electronic sounder

IP65

CN41/D/RN	205101	104 dB	10-30 VDC	red audible signal	110	100	80
-----------	--------	--------	-----------	--------------------	-----	-----	----

YODALARM - Audible signal - Industrial & marine electronic sounder

IP66

YA40/D/RN/WR	204330	108 dB	24 VDC	red audible signal	92	92	83
YA40/D/WR/WR	204344	108 dB	24 VDC	white audible signal	92	92	83
YA40/N/RN/WR	204364	108 dB	230 VAC	red audible signal	92	92	83
YA40/N/WR/WR	204866	108 dB	230 VAC	white audible signal	92	92	83
YA50/D/RF/WR	204881	112 dB	24 VDC	red audible signal	136	153	127
YA50/N/RF/WR	204382	112 dB	230 VAC	red audible signal	136	153	127
YA80/D/RF/WR	204407	116 dB	24 VDC	red audible signal	219	269	153
YA80/N/RF/WR	204436	116 dB	230 VAC	red audible signal	219	269	153
YA80/D/RF/SU/WR	204404	120 dB	24 VDC	red audible signal	219	269	153
YA80/N/RF/SU/WR	204434	120 dB	230 VAC	red audible signal	219	269	153

Visual signals - FL40 flashing xenon beacons

IP65

The YODAC FL40 series offers a multi-purpose visual signalling designed for industrial and commercial applications. The FL40 uses a 5J xenon flash to alert, warn or draw attention to critical events in an industrial environment.

- Operating voltage: 24 VDC & 230 VAC standard (*other voltages available on request*)
- Material: ABS Flame Retardant
- Colour: Red (*White available on request - Change RN for WN in Order Number*)
- Approvals:

type	model number	lens colour	operating voltage	description	Candela (Cd)
------	--------------	-------------	-------------------	-------------	--------------

YODAC FL40 - Visual signal - Industrial flashing 5J xenon beacon

Xenon strobe beacon

FL40/D50/A/RN	204955	amber	24 VDC	xenon strobe beacon	25.52
FL40/D50/R/RN	204994	red	24 VDC	xenon strobe beacon	8.92
FL40/D50/G/RN	204984	green	24 VDC	xenon strobe beacon	29.70
FL40/D50/B/RN	204969	blue	24 VDC	xenon strobe beacon	14.09
FL40/N50/A/RN	205026	amber	230 VAC	xenon strobe beacon	25.52
FL40/N50/R/RN	205047	red	230 VAC	xenon strobe beacon	8.92
FL40/N50/G/RN	205039	green	230 VAC	xenon strobe beacon	29.70
FL40/N50/B/RN	205033	blue	230 VAC	xenon strobe beacon	14.09

Visual Signals Beacon - Product range



FL40



Yodac Beacon IP65



Xenon 5J



Flashing



Cost effective solution alarm device for fire alarm systems.

FD40 - SD40

Yodac Beacon IP65

12 LED or 25 LED array for 24VDC
25 LED array for 85-280 VAC/DC

Static or Flashing

Can be used to alert, warn or draw attention to an event or for a status indication.



SD40/ML/A/25



FD40/DL/R/25



FD40/ML/G/25



212888



212880

Visual signal - FD40/SD40 Flashing & Static LED Beacons

The YODAC FD40/SD40 series offers a stackable multi-purpose visual signalling designed for industrial and light commercial applications to offer local multiple status indication. Featuring long-life arrays 25 LED and low current consumption, the FD40 provides a flash signal while the SD40 provides a static signal, ideal to alert or draw attention to a critical event.




The flame-retardant ABS back box, available in red or white, along with UV-stable polycarbonate lenses, enhances durability and visibility.

These beacons are robust, reliable and easy to install, offering modular signal design flexibility along with the option of adding acoustic signalling.

How to configure a FD40 / SD40 selection:

Step 1. Choose a suitable single, double, triple or quadruple (*back box in red or white*)

Step 2. Choose from six lens colours for FD40 or/and SD40 (*more available on request*) or/and sounder

- Operating voltage: 24 VDC & 230 VAC standard (*other voltages available on request*)
- Material: ABS flame retardant
- Colour: Red or White (*For the Back Box*)
- Light output: 25 LED standard (*12 LED available on request for 24 VDC only*)
- Approvals:   

type	model number	lens colour	operating voltage	description	Candela (Cd)
------	--------------	-------------	-------------------	-------------	--------------

YODAC FD40 - Visual signal - Industrial flashing LED beacon IP65

- High-visibility fault or alarm warning on machinery, conveyors and pump stations
- Evacuation / access-denied signalling on doors, loading bays and hazardous zones

LED flashing beacon

FD40/DL/A/25	245884	amber	12-28 VDC	LED flashing beacon	62.31
FD40/DL/R/25	245885	red	12-28 VDC	LED flashing beacon	55.12
FD40/DL/G/25	245886	green	12-28 VDC	LED flashing beacon	69.23
FD40/DL/B/25	245888	blue	12-28 VDC	LED flashing beacon	10.27
FD40/ML/A/25	245448	amber	85-280 VAC/DC	LED flashing beacon	62.31
FD40/ML/R/25	245449	red	85-280 VAC/DC	LED flashing beacon	55.12
FD40/ML/G/25	245450	green	85-280 VAC/DC	LED flashing beacon	69.23
FD40/ML/B/25	245452	blue	85-280 VAC/DC	LED flashing beacon	10.27

Other colours available on request.

YODAC SD40 - Visual signal - Industrial static LED beacon IP65

- Continuous "power-on" or "system healthy" indication on control panels, MCCs and HVAC units
- Steady status light for bin-full, line-running or safe-to-enter notification in production and logistics

LED static beacon

SD40/DL/A/25	245892	amber	12-28 VDC	LED static beacon	62.31
SD40/DL/R/25	245893	red	12-28 VDC	LED static beacon	55.12
SD40/DL/G/25	245894	green	12-28 VDC	LED static beacon	69.23
SD40/DL/B/25	245896	blue	12-28 VDC	LED static beacon	10.27
SD40/ML/A/25	245468	amber	85-280 VAC/DC	LED static beacon	62.31
SD40/ML/R/25	245469	red	85-280 VAC/DC	LED static beacon	55.12
SD40/ML/G/25	245470	green	85-280 VAC/DC	LED static beacon	69.23
SD40/ML/B/25	245472	blue	85-280 VAC/DC	LED static beacon	10.27

Other colours available on request.

YODAC - Back box for FD40/SD40 IP65

type	colour	number beacon	description	dimensions (mm)		
				(H)	(W)	(D)
212886	red	1	single back box	92	92	82
212887	red	2	dual back box	184	92	82
212888	red	3	triple back box	276	92	82
212889	red	4	quad back box	368	92	82
212880	white	1	single back box	92	92	82
212881	white	2	dual back box	184	92	82
212882	white	3	triple back box	276	92	82
212883	white	4	quad back box	368	92	82

Visual Signals Beacon - Colours

— Available colours —



— Available colours on request —





Industrial Signalling



YL40/N50/A/RN



YL50 - Red lens



YL80 - Amber lens

Combined Audible & Visual signals - Sounder/Beacon

The YODALIGHT series offers a range multi-purpose acoustic and visual signalling devices designed for industrial, commercial & marine applications (MED & MER approved).

Featuring a 32-tone electronic sounder with a xenon or LED flash beacon, these robust combinations enhance safety and ensure clear alerts in demanding environments.

- Operating voltage: 24 VDC & 230 VAC standard (*other voltages available on request*)
- Material: ABS flame retardant
- Colour: Red or White (*For YL40 only - Change RN for WN in part number*)
- Tones: 2 stages alarm & 32 selectable tones
- Light Output: 5J xenon or 25 LED
- Approvals: CE UK CA RoHS EN54-3

type	model number	lens colour	dB @1m	operating voltage	description	Candela (Cd)
------	--------------	-------------	--------	-------------------	-------------	--------------

YODALIGHT - Acoustic & Visual signal - Flashing 5J xenon sounder/beacon IP65

YL40 - (H) 183 x (W) 92 x (D) 83 mm

YL40/D50/A/RNWR	204507	amber	108 dB	24 VDC	xenon strobe combination	38.32
YL40/D50/R/RNWR	204540	red	108 dB	24 VDC	xenon strobe combination	36.75
YL40/N50/A/RNWR	204570	amber	108 dB	230 VAC	xenon strobe combination	38.32
YL40/N50/R/RNWR	204588	red	108 dB	230 VAC	xenon strobe combination	36.75

YL50 - (H) 194 x (W) 153 x (D) 127 mm IP65

YL50/D50/A/RFWR	204815	amber	112 dB	24 VDC	xenon strobe combination	25.52
YL50/D50/R/RFWR	204835	red	112 dB	24 VDC	xenon strobe combination	8.92
YL50/N50/A/RFWR	204627	amber	112 dB	230 VAC	xenon strobe combination	25.52
YL50/N50/R/RFWR	204646	red	112 dB	230 VAC	xenon strobe combination	8.92

YL80 - (H) 277 x (W) 250 x (D) 159 mm IP65

YL80/D50/A/RFWR	204678	amber	116 dB	24 VDC	xenon strobe combination	25.52
YL80/D50/R/RFWR	204697	red	116 dB	24 VDC	xenon strobe combination	8.92
YL80/N50/A/RFWR	204720	amber	116 dB	230 VAC	xenon strobe combination	25.52
YL80/N50/R/RFWR	204738	red	116 dB	230 VAC	xenon strobe combination	8.92

YL80 Super - (H) 277 x (W) 250 x (D) 159 mm IP65

YL80/D50/A/RF/SUWR	204675	amber	120 dB	24 VDC	xenon strobe combination	25.52
YL80/D50/R/RF/SUWR	204695	red	120 dB	24 VDC	xenon strobe combination	8.92
YL80/N50/A/RF/SUWR	204717	amber	120 dB	230 VAC	xenon strobe combination	25.52
YL80/N50/R/RF/SUWR	204735	red	120 dB	230 VAC	xenon strobe combination	8.92

Other colours available on request

If you require a product in a lens colour other than those listed above, simply replace the corresponding letter with the colour of the lens to create the correct part code:

G = Green | **O** = Opal | **B** = Blue | **C** = Clear | **Y** = Yellow | **M** = Magenta

Combination signals - Product range



Red (RAL 2002)
ABS Flame Retardant

Available colours



YL50



Yodalight 50 IP66



25 LED array Xenon 5J



Up to 112dB



Flashing or Static (25 LED version)
2 stages alarm & 32 tones
Independently Selectable 2nd Stage



Approved EN54 Pt:3 Fire & MED

YL80

Yodalight 80 IP66

25 LED array Xenon 5J

Up to 116dB

Flashing or Static (25 LED version)
2 stages alarm & 32 tones
Independently Selectable 2nd Stage

Approved EN54 Pt:3 Fire & MED

Available colours on request





YL40 - Blue lens - WN



YL50 Hi-Vis - Amber lens



YL80 SUPER Hi-Vis - Opal lens

HI-VIS - Combined Audible & Visual signals

The YODALIGHT Hi-Vis series has been designed to offer an alternative and upgraded solution to the standard YODALIGHT series, featuring a beacon of 25 bright LEDs fitted vertically below the sounder, providing a powerful and clearly visible visual warning. With low current consumption and bright light intensity, it is ideal for industrial, commercial and marine applications, with MED and MER certification.

- Operating voltage: 24 VDC & 230 VAC standard (*other voltages available on request*)
- Material: ABS flame retardant
- Colour: Red or White (*For YL40 only - Change **RN** for **WN** in part number*)
- Tones: 2 stages alarm & 32 selectable tones
- Light Output: 25 LED (*12 LED available on request for 24 VDC only*)
- Approvals:     **EN54-3**

type	model number	lens colour	dB @1m	operating voltage	description	Candela (Cd)
------	--------------	-------------	--------	-------------------	-------------	--------------

YODALIGHT Hi-Vis - Acoustic & Visual signal - Flashing 25 LED Sounder/Beacon

YL40 - (H) 183 x (W) 92 x (D) 83 mm IP65

YL40/DL/A/25/RN/WR	245770	amber	108 dB	24 VDC	LED flashing combination	62.31
YL40/DL/R/25/RN/WR	245771	red	108 dB	24 VDC	LED flashing combination	55.12
YL40/NL/A/RN/WR	245204	amber	108 dB	230 VAC	LED flashing combination	62.31
YL40/NL/R/RN/WR	245205	red	108 dB	230 VAC	LED flashing combination	55.12

YL50 Hi-Vis - (H) 230 x (W) 153 x (D) 127 mm IP66

YL50/DL/A/25/RF/HV/WR	245802	amber	112 dB	24 VDC	LED flashing combination	62.31
YL50/DL/R/25/RF/HV/WR	245803	red	112 dB	24 VDC	LED flashing combination	55.12
YL50/NL/A/RF/HV/WR	245304	amber	112 dB	230 VAC	LED flashing combination	62.31
YL50/NL/R/RF/HV/WR	204305	red	112 dB	230 VAC	LED flashing combination	55.12

YL80 Hi-Vis- (H) 312 x (W) 250 x (D) 159 mm IP66

YL80/DL/A/25/RF/HV/WR	245818	amber	116 dB	24 VDC	LED flashing combination	62.31
YL80/DL/R/25/RF/HV/WR	245819	red	116 dB	24 VDC	LED flashing combination	55.12
YL80/NL/A/RF/HV/WR	245354	amber	116 dB	230 VAC	LED flashing combination	62.31
YL80/NL/R/RF/HV/WR	245355	red	116 dB	230 VAC	LED flashing combination	55.12

YL80 Super Hi-Vis - (H) 312 x (W) 250 x (D) 159 mm IP66

YL80/DL/A/25/RF/HV/SU/WR	245826	amber	120 dB	24 VDC	LED flashing combination	62.31
YL80/DL/R/25/RF/HV/SU/WR	245827	red	120 dB	24 VDC	LED flashing combination	55.12
YL80/NL/A/RF/HV/SU/WR	245394	amber	120 dB	230 VAC	LED flashing combination	25.52
YL80/NL/R/RF/HV/SU/WR	245395	red	120 dB	230 VAC	LED flashing combination	55.12

Other colours available on request

If you require a product in a lens colour other than those listed above, simply replace the corresponding letter with the colour of the lens to create the correct part code:

G = Green | **O** = Opal | **B** = Blue | **C** = Clear | **Y** = Yellow | **M** = Magenta

Combination signals - Product range


Red (RAL 2002)
ABS Flame Retardant

Available colours



YL50 Hi Vis



Yodalight 50 IP66



25 LED array Xenon 5J



Up to 112dB



Flashing or Static (25 LED version)
2 stages alarm & 32 tones
Independently Selectable 2nd Stage



Approved EN54 Pt:3 Fire & MED

YL80 Hi Vis

Yodalight 80 IP66

25 LED array Xenon 5J

Up to 116dB

Flashing or Static (25 LED version)
2 stages alarm & 32 tones
Independently Selectable 2nd Stage

Approved EN54 Pt:3 Fire & MED

Available colours on request





XLP5MV-R



XLT5MV-B



XLT5230-G



M-S3230AB

ACOT500's beacon range delivers exceptional value by combining reliable performance, robust construction and installation versatility. These units feature UV-stabilized polycarbonate lenses and epoxy-potted electronics for long service life, even in harsh environments.

- Durable construction: Polycarbonate UV-stabilized lens and base
- Multi-voltage (MV): 10 - 100 VDC / 20 - 72 VAC

type	lens colour	supply voltage	description	dimensions (mm)	
				Ø	ext.

XLPx series - Low-profile econo beacons**IP54**

A compact xenon strobe designed for installations with limited space, it features interchangeable lenses and wide voltage compatibility for maximum flexibility.

XLP series (Low-profile xenon strobes)**XLP2 - 2W / XLP5 - 5W**

XLP2MV-R	amber	MV	low profile xenon beacon	95	129
XLP2MV-A	red	MV	low profile xenon beacon	95	129
XLP2MV-B	blue	MV	low profile xenon beacon	95	129
XLP2MV-G	green	MV	low profile xenon beacon	95	129
XLP2230-R	amber	230 VAC	low profile xenon beacon	95	129
XLP2230-A	red	230 VAC	low profile xenon beacon	95	129
XLP2230-B	blue	230 VAC	low profile xenon beacon	95	129
XLP2230-G	green	230 VAC	low profile xenon beacon	95	129
XLP5MV-A	amber	MV	low profile xenon beacon	95	129
XLP5MV-R	red	MV	low profile xenon beacon	95	129
XLP5MV-B	blue	MV	low profile xenon beacon	95	129
XLP5MV-G	green	MV	low profile xenon beacon	95	129

XLP series (Low-profile LED)**2W**

XLPMVA	amber	MV	low profile LED beacon	95	129
XLPMVR	red	MV	low profile LED beacon	95	129
XLPMVG	green	MV	low profile LED beacon	95	129
XLP230A	amber	230 VAC	low profile LED beacon	95	129
XLP230R	red	230 VAC	low profile LED beacon	95	129
XLP230G	green	230 VAC	low profile LED beacon	95	129
72FX2	grey		surface mounting base	for 72XS/FX2	

XLTx series - Tall-profile econo beacons**IP54**

Offers enhanced visibility with a vertical-profile xenon strobe, perfect for permanent installations requiring 360° coverage

XLP5 series (tall-profile xenon strobes)**5W**

XLT5MV-R	amber	MV	tall profile xenon beacon	74	130
XLT5MV-A	red	MV	tall profile xenon beacon	74	130
XLT5MV-B	blue	MV	tall profile xenon beacon	74	130
XLT5MV-G	green	MV	tall profile xenon beacon	74	130
XLT5230-R	amber	230 VAC	tall profile xenon beacon	74	130
XLT5230-A	red	230 VAC	tall profile xenon beacon	74	130
XLT5230-B	blue	230 VAC	tall profile xenon beacon	74	130
XLT5230-G	green	230 VAC	tall profile xenon beacon	74	130

XLP5 series (tall-profile LED)**5W**

XLTMVA	amber	MV	low profile LED beacon	74	130
XLTMVR	red	MV	low profile LED beacon	74	130
XLTMVG	green	MV	low profile LED beacon	74	130
XLT230A	amber	MV	low profile LED beacon	74	130
XLT230R	red	MV	low profile LED beacon	74	130
XLT230G	green	MV	low profile LED beacon	74	130

S3 series (High-energy, 8 J xenon strobes)**8 joule****IP54**

Built for critical-warning scenarios, the high-energy series delivers powerful 8 Joule output ensuring maximum attention.

- Maximum brightness: 8.6 J per flash (11.3 W/s) double-flash power for outstanding visibility

S3 xenon beacon

M-S3021RB	amber	12 - 24 VDC	high energy xenon beacon	74	130
M-S3021AB	red	12 - 24 VDC	high energy xenon beacon	74	130
M-S3021BB	blue	12 - 24 VDC	high energy xenon beacon	74	130
M-S3021GB	green	12 - 24 VDC	high energy xenon beacon	74	130
M-S3230RB	amber	230 VAC	high energy xenon beacon	74	130
M-S3230AB	red	230 VAC	high energy xenon beacon	74	130
M-S3230BB	blue	230 VAC	high energy xenon beacon	74	130
M-S3230GB	green	230 VAC	high energy xenon beacon	74	130



FD-108R



MB-4B-240VAC RED



MC-412 12VDC GREY



AIZ010

Manual call points / Alarm bells

With over 40 years of experience in fire-alarm and security signalling, Multice offers conventional and addressable fire systems, coil- and motor-driven bells, manual call points, sirens, and accessories – each engineered for high quality, prompt delivery, and fully customisable configurations.

Manual call point “in case of fire” break-glass devices

(H) 88 x (W) 88 x (D) 56 mm

- Operating contact 125/250 VAC 1A
- Robust ABS housing ensures effective impact resistance
- Wide operating temperature range between -10°C and +55°C to withstand harsh conditions

type	glass type	colour	description
------	------------	--------	-------------

Manual call points

FD-108R	“break glass”	red	emergency manual call point enclosure
FD-108RC	“break glass”	red	as above with cover (flap)
FD-108W	“break glass”	white	emergency manual call point enclosure
FD-108G	“break glass”	green	emergency manual call point enclosure
FD-108S	spare		spare glass for FD-108 series
FD-108K	key		test key for FD-108

MB series – Coil-driven fire alarm bells

A versatile range of loud, low-current bells in 4”, 6”, 8” and 10” dome sizes, available in both AC and DC models. Designed for rapid installation, zero standby current and reliable indoor/outdoor use.

- 4”6” and 8” dome sizes
- Loud, distinctive and clear ringing sound

type	supply voltage	colour	alarm	description
------	----------------	--------	-------	-------------

MB series (coil driven)

4"

MB-4B-24VDC RED	24 VDC	red	50mA	4" (100 mm) bell 90dB @1meter
MB-4B-240VAC RED	240 VAC	red	50mA	
MB-4B-240VAC GREY	240 VAC	grey	50mA	

MB series (coil driven)

6"

MB-6B-12VDC RED	12 VDC	red	45mA	6" (100 mm) bell 90dB @1meter
MB-6B-12VDC GREY	12 VDC	grey	45mA	
MB-6B-24VDC RED	24 VDC	red	45mA	
MB-6B-24VDC GREY	24 VDC	grey	45mA	
MB-6B-240VAC RED	240 VAC	red	45mA	
MB-6B-240VAC GREY	240 VAC	grey	45mA	

MB series (coil driven)

8"

MB-8B-12VDC RED	12 VDC	red	45mA	8" (100 mm) bell 90dB @1meter
MB-8B-12VDC GREY	12 VDC	grey	45mA	
MB-8B-24VDC RED	24 VDC	red	45mA	
MB-8B-24VDC GREY	24 VDC	grey	45mA	
MB-8B-240VAC RED	240 VAC	red	45mA	
MB-8B-240VAC GREY	240 VAC	grey	45mA	
MB-BBX-24 RED		red		enclosures for above MB series
MB-BBX-24 GREY		grey	45mA	

MC series – Motor-driven bells

High-SPL bells driven by a motor mechanism, delivering a clear, penetrating tone (≥ 83 dB at 3 ft). Offered in 4” and 6” gong sizes, DC 12 V/24 V inputs and red or grey housings. Suitable for both indoor and outdoor environments

MC series (motor driven)

4"

MC-412 12VDC RED	12 VDC	red	40mA	4" (100 mm) bell 83dB @1meter
MC-412 12VDC GREY	12 VDC	grey	40mA	
MC-424 24VDC RED	24 VDC	red	40mA	
MC-424 24VDC GREY	24 VDC	grey	40mA	

Samui Corp - Air horns

115dB @ 1m

- Can be refilled from any compressed air source
- Autonomy: Approx. 30 seconds continuous blast when fully charged

AIZ002 115dB @ 1m rechargeable air horn with holster

- Industrial rechargeable air horn made from non-corrosive materials
- Enclosed air tank has a large capacity up to 165 very loud half-second bursts from one fill of air

AIZ010 115dB @ 1m rechargeable air horn



Signalling devices



TK86HPA



TK86HPR



TK86HPB



TK86HPG

Signalling devices

TK86 HP range is a compact, low-profile xenon strobe built around a UV-stable ABS base with an acrylic lens and rated to IP55 for dust and water ingress. Standard variants operate from 12 VDC, 24 VDC, or 240 VAC and use a 5 W xenon tube (*approx. 75 flashes min⁻¹*).

Dome colours amber, blue, clear, green, and red are field-replaceable via a simple twist-off bayonet, keeping maintenance time to a minimum. The robust construction, continuous-duty drive circuit, and long-life tube give the beacon a reliable service life in exposed outdoor locations.

General features:

- Low-profile, UV-stable ABS base with acrylic lens
- IP55 rated for dust and water resistance
- Xenon tube optimized for long life and consistent output
- Replaceable Domes in above colours - Simple twist-off design for fast field maintenance
- Lens colour:
 - Amber (-A),
 - Red (-R),
 - Blue (-B),
 - Green (-G),
 - Clear (-C)
- Flash rate: 75 flashes/minute
- Output: 15W

Benefits of Xenon flash beacons:

A xenon flash tube produces an intense, instantaneous pulse by discharging a capacitor through ionised xenon gas. The short duty cycle means very high peak brightness with candela levels far exceeding filament or LED beacons of similar power while keeping average current draw low.

High peak brightness: Single pulse delivers intense, daylight-visible light

Low power draw: Brief flashes keep current low ideal for battery/solar

Instant start-up: Full intensity with no warm-up

Smoke/fog penetration: High peak intensity cuts through obscurants

Long service life: Sealed, filament-free tube resists shock and vibration

Wide viewing angle: Omni-directional flash -360° coverage

Wide temperature range: Reliable in extreme heat or cold

Applications:

- Fire-alarm panels, security systems, process-control alarms
- Surface-mount or recessed in back-boxes or custom enclosures
- Ideal where low profile and weather resistance are required

type	lens colour	supply voltage	description	dimensions (mm)	
				Ø	ext.
TK86HP series - Xenon Strobes				IP55	
12 VDC Strobes		5W			
TK86HP DC12V-A	amber	12 VDC	xenon beacon	94	105
TK86HP DC12V-R	red	12 VDC	xenon beacon	94	105
TK86HP DC12V-B	blue	12 VDC	xenon beacon	94	105
TK86HP DC12V-G	green	12 VDC	xenon beacon	94	105
TK86HP DC12V-C	clear	12 VDC	xenon beacon	94	105
24 VDC Strobes		5W			
TK86HP DC24V-A	amber	24 VDC	xenon beacon	94	105
TK86HP DC24V-R	red	24 VDC	xenon beacon	94	105
TK86HP DC24V-B	blue	24 VDC	xenon beacon	94	105
TK86HP DC24V-G	green	24 VDC	xenon beacon	94	105
TK86HP DC24V-C	clear	24 VDC	xenon beacon	94	105
240 VDC Strobes		5W			
TK86HP AC240V-A	amber	240 VAC	xenon beacon	94	105
TK86HP AC240V-R	red	240 VAC	xenon beacon	94	105
TK86HP AC240V-B	blue	240 VAC	xenon beacon	94	105
TK86HP AC240V-G	green	240 VAC	xenon beacon	94	105
TK86HP AC240V-C	clear	240 VAC	xenon beacon	94	105

Accessories for above TK86HP series

IP55

- Available in Amber, Blue, Clear, Green or Red - easy customization to meet most requirements.
- Field-Replaceable Domes: Quick-release MX90025× lenses allow maintenance without removing the unit

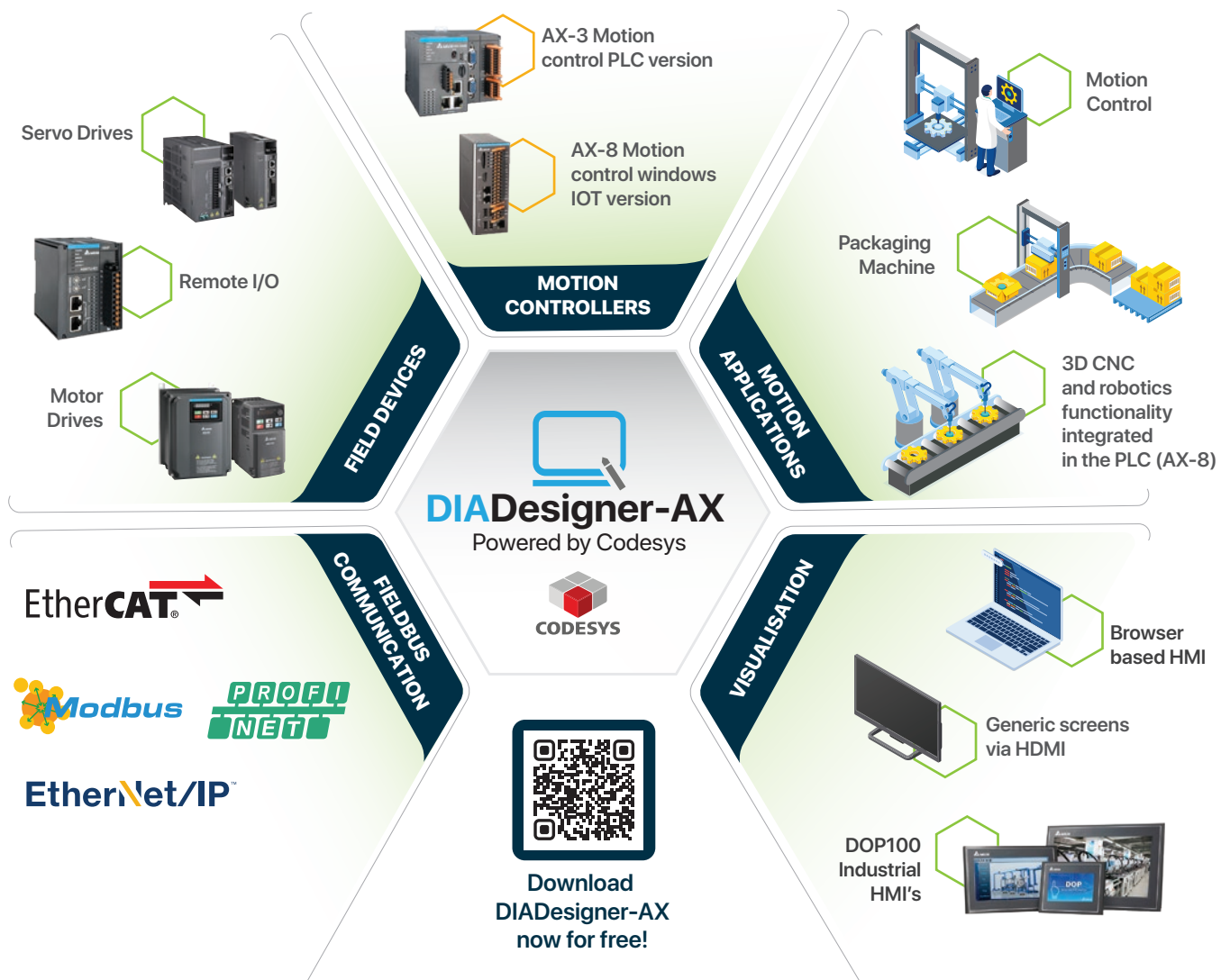
Spare domes

TK86HP DOME-A	amber	MV	tall profile xenon beacon	74	130
TK86HP DOME-R	red	MV	tall profile xenon beacon	74	130
TK86HP DOME-B	blue	MV	tall profile xenon beacon	74	130
TK86HP DOME-G	green	MV	tall profile xenon beacon	74	130
TK86HP DOME-C	clear	MV	tall profile xenon beacon	74	130

The comprehensive automation software

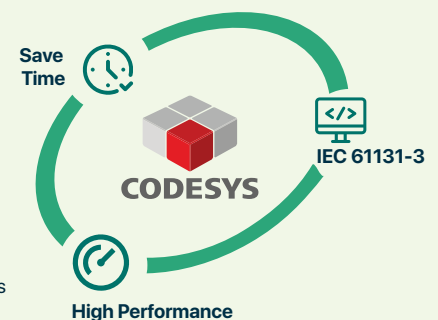


DIADesigner AX powered by Codesys offers a comprehensive PLC and motion-control software development solution. With adherence to the IEC 61131-3 standard, users can expect a familiar and internationally recognised programming environment. It is the perfect platform for integrating components like Delta PLCs, HMIs, servos, motor drives, and remote I/O, making it a versatile choice for automation projects.



DIADesigner-AX key features:

- Comprehensive Editors: Supports all IEC 61131-3 editors (FBD, LD, ST, SFC) and their variants
- Proven Libraries: Extensive library concept for reusable applications
- Advanced Debugging: Fast optimization and testing with extensive debugging and online features
- Device Compatibility: Intergrate devices from various manufacturers
- Versatile POU's: Support for single and multi-axis movements with PLCOpen POU's
- Dynamic Monitoring: Additional POU's for monitoring dynamic data, error tracking, and CAM controllers





LED signalling devices

Sinowatcher is a high-tech developer and manufacturer of road-safety and traffic-management products—including LED traffic signals, pedestrian lights, countdown timers, and signal controllers.

Committed to international standards, it holds ISO 9001:2015 certification and its products are CE, RoHS, IEC, and EN 12368 compliant, all designed to ensure smooth traffic flow and enhanced road safety.

Featuring a wide input voltage for both AC and DC options, these modular traffic lights combine high-intensity, energy-efficient LEDs with an 80,000-hour lifespan and a cobweb-pattern polycarbonate lens for even illumination and minimal phantom effects.

Housed in UV-resistant, waterproof, and dustproof polycarbonate, they require minimal power and offer effortless installation and maintenance.

100 mm traffic lights (cobweb-lens)

- Diameter: \varnothing 100 mm
- LED type: 5 mm DIP
- View distance: ≥ 200 m
- Operating temperature: $-40^{\circ}\text{C} \sim +80^{\circ}\text{C}$
- Optical lens: Double-layer for even light distribution
- Lens pattern: Cobweb-patterned lens for enhanced wide-angle visibility and reduced glare
- Application: Ideal for repeater traffic junctions, parking lot entrances, and educational facilities

type	colours	supply	lens	description
100 mm series (2-way)		2-light - green/red - IP66		(H) 300 x (W) 150 x (D) 133 mm
STJD100G-AC1L3a-01	red/green	85 - 265 VAC	cobweb	industrial LED traffic light
STJD100G-DC1L3a-01	red/green	12 - 24 VDC	cobweb	industrial LED traffic light
100 mm series (3-way)		3-light - green/amber/red - IP54		(H) 450 x (W) 150 x (D) 133 mm
STJD100G-AC1L3c-01	red/amber/green	85 - 265 VAC	cobweb	industrial LED traffic light
STJD100G-DC1L3c-01	red/amber/green	12 - 24 VDC	cobweb	industrial LED traffic light

Accessories for 100 mm traffic lights (above)

STJDDX100-AC1L3R-01	red	85 - 265 VAC	spare full ball traffic light module
STJDDX100-AC1L3A-01	amber	85 - 265 VAC	spare full ball traffic light module
STJDDX100-AC1L3G-01	green	85 - 265 VAC	spare full ball traffic light module
STJDDX100-DC1L3R-01	red	12 - 24 VDC	spare full ball traffic light module
STJDDX100-DC1L3A-01	amber	12 - 24 VDC	spare full ball traffic light module
STJDDX100-DC1L3G-01	green	12 - 24 VDC	spare full ball traffic light module
PCH100	black	1-aspect	100 mm housing kit (PC black)
PCH100x2	black	2-aspect	100 mm housing kit (PC black)
PCH100x3	black	3-aspect	100 mm housing kit (PC black)

200mm traffic lights (clear-lens)

- Diameter: \varnothing 200 mm
- LED type: 5 mm DIP
- View distance: ≥ 300 m
- Operating temperature: $-40^{\circ}\text{C} \sim +80^{\circ}\text{C}$
- Application: Urban traffic signalling
- Optical lens: Transparent polycarbonate lens – impact resistant
- Lens pattern: Clear lens - anti-phantom effect minimized, optimal viewing angle

200 mm series (2-way)		2-light - green/red - IP55		(H) 530 x (W) 265 x (D) 133 mm
STJD200E-AC1L0a-01	red/green	85 - 265 VAC	clear	industrial LED traffic light
STJD200E-DC1L0a-01	red/green	12 - 24 VDC	clear	industrial LED traffic light
200 mm series (3-way)		3-light - green/amber/red - IP55		(H) 795 x (W) 265 x (D) 133 mm
STJD200E-AC1L0c-01	red/amber/green	85 - 265 VAC	clear	industrial LED traffic light
STJD200E-DC1L0c-01	red/amber/green	12 - 24 VDC	clear	industrial LED traffic light

Accessories for 200 mm traffic lights (above)

STJDDX200-AC1L0R-01	red	85 - 265 VAC	spare full ball traffic light module
STJDDX200-AC1L0Y-01	amber	85 - 265 VAC	spare full ball traffic light module
STJDDX200-AC1L0G-01	green	85 - 265 VAC	spare full ball traffic light module
STJDDX200-DC1L0R-01	red	12 - 24 VDC	spare full ball traffic light module
STJDDX200-DC1L0Y-01	amber	12 - 24 VDC	spare full ball traffic light module
STJDDX200-DC1L0G-01	green	12 - 24 VDC	spare full ball traffic light module
PCH200	black	1-aspect	200 mm housing kit (PC black)
PCH200x2	black	2-aspect	200 mm housing kit (PC black)
PCH200x3	black	3-aspect	200 mm housing kit (PC black)



Engineered for **Extreme** Environments

Reliable audible & visual Signalling solutions designed to meet the highest global safety standards. Built for Zone 1, 2, 21 & 22 and Class I Div 1 & 2 hazardous locations, our explosion-proof devices ensure compliance, safety, and durability in oil & gas, chemical processing, marine, and mining industries..

Ranges



Visual



Audible



Combination



Call Points

Certification



Breakdown of the Part No: **D1xB2LD2AC230MN1AIR/R**

D1xB2	LD2	AC230	M	N	1	A	1	R	/	R
1	2	3	4	5	6	7	8	9		10
	Type	Voltage:	Cable entries:	Stopping plug:	Guard material	Product version:	Product option:	Encl colour:		Lens colour:

Section	Code Example	Meaning
1 Series	D1xB2	Product Series
2 Type	LD2	Multi-function LED beacon
3 Voltage	AC230	230V AC (standard voltage options)
4 Cable Entry	M	M20 (standard selection)
5 Stopping Plug	N	Nickel-Plated Brass (preferred for LM6 & GRP)
6 Guard / bracket Material	1	A4 316 Stainless Steel
7 Product Version	A	IECEx, ATEX approvals
8 Product Option	1	Standard product
9 Enclosure Colour	R	Red
10 Lens Colour	R	Red (Standard)



Special Orders & Custom Variants

If you need a specialized variant or any item not listed here, please contact us—our team can assist accordingly with the full E2S portfolio.



D1XB2LD2AC230MN1A1R/R



D1XB2X10DC024MN1A1R/A



D1XS1FDC024AN1A1R



D1XS1RAC230AN1A1R



D1XC1X05FDC024AN1A1R/R

LM6 Aluminium – Ideal for harsh industrial & offshore

E2S hazardous location signalling range in **LM6 marine-grade aluminium** offers superior durability and corrosion resistance for extreme environments. This range includes high-output visual beacons and strobes, powerful audible alarm sounders, combination units for synchronized alerts, and manual call points for emergency activation.

Designed for hazardous locations, it meet **SIL1** and **SIL2** compliance and are certified to **IECEx**, **UL**, **cUL**, and **ATEX** standards, covering all gas groups, classes, divisions, and zones.

LM6 Aluminium benefits:

- Marine-grade corrosion-resistant material
- Ideal for heavy industrial environments
- High mechanical strength

Application industries:

- Oil & Gas (*upstream and downstream*)
- Petrochemical Plants
- Industrial Processing Facilities and Mining

type	supply voltage	lens colour	cable entry	description
------	----------------	-------------	-------------	-------------

D1xB2 series	Multi-function beacon	LM6 aluminium
--------------	-----------------------	---------------

D1xB2 range offers both high-intensity LED and Xenon beacons in a robust, marine-grade aluminium enclosure. These IECEx, ATEX, Zone 1, UL Class, Div 1 devices offer multiple flash patterns and lens colour options, delivering reliable visual alerts in harsh hazardous environments,

- Four flash rates: 1Hz, 1.3Hz, 1.5Hz & double flash
- Automatic synchronisation on multi-beacon system
- Red enclosure, 4 x side, 1 x pendant cable entries – stopping plugs included

Applications: Ideal for onshore and offshore hazardous locations – oil & gas, chemical plants, etc.

Xenon Beacon (ultra-bright, high-intensity) - 10J (Joules)

D1XB2X10DC024MN1A1R/R	24 VDC	red	2 x M20	multi-function xenon beacon
D1XB2X10DC024MN1A1R/A	24 VDC	amber	2 x M20	multi-function xenon beacon
D1XB2X10DC024MN1A1R/B	24 VDC	blue	2 x M20	multi-function xenon beacon

LED Beacon (for long-lasting)

D1XB2LD2AC230MN1A1R/R	230 VAC	red	2 x M20	multi-function LED beacon
D1XB2LD2AC230MN1A1R/A	230 VAC	amber	2 x M20	multi-function LED beacon
D1XB2LD2AC230MN1A1R/B	230 VAC	blue	2 x M20	multi-function LED beacon

Other voltages, colours, xenon intensity versions available on request

D1xS series	Horn/Sounder (64 alarm tone frequencies)	LM6 aluminium
-------------	--	---------------

type	supply voltage	dB @ 1m	colour	cable entry	description
------	----------------	---------	--------	-------------	-------------

D1xS1 series are high-performance, globally certified alarm horn sounders designed for hazardous location signalling. Featuring Type 4/4X, IP66 marine-grade aluminium enclosures, they ensure corrosion resistance and durability.

Approved for Class I & II Div 1, Zone 1 & 20, IECEx, and ATEX Zone 1, 2, 21 & 22.

Key features:

- Choice of 64 alarm tone frequencies
- Automatic synchronisation on multi-sounder system
- Ratchet adjustable 316 stainless steel bracket

Flare (maximize sound projection in a specific direction)

D1XS1FDC024AN1A1R	24 VDC	110	red	2 x M20	horn/sounder
-------------------	--------	-----	-----	---------	--------------

Radial (omni-directional - disperses sound equally in all directions (360°))

D1XS1RAC230AN1A1R	230 VAC	110	red	2 x M20	horn/sounder
-------------------	---------	-----	-----	---------	--------------

D1xC1 series	Combined Alarm Horn & Xenon Strobe	LM6 Aluminium
--------------	------------------------------------	---------------

D1xC1 is a globally certified alarm horn sounder with a compact, omni-directional horn and a 5 Joule Xenon strobe beacon.

Its robust Type 4/4X, IP66/67 marine-grade aluminium enclosure ensures corrosion resistance and durability.

Approved for IECEx, and ATEX Zone 1, 2, 21 & 22

- 64 alarm tones, each of the 4 stage/channels can be remotely activated. and private mode fire alarm use (*strobe beacon*). SIL1 & 2 compliant to IEC61508 (2010).

D1XC1X05FDC024AN1A1R/R	24 VDC	110	red	2 x M20	multifunc. beacon
------------------------	--------	-----	-----	---------	-------------------



GRP – Glass Reinforced Polyester – Best for chemical & corrosive environments

GRP (Glass Reinforced Polyester) offers exceptional corrosion resistance and lightweight durability for harsh industrial and offshore environments.

Featuring high-output visual beacons, powerful audible sounders, combination units, and manual call points, it meets **SIL1** and **SIL2** compliance and is certified to **IECEx**, **UL**, **cUL**, and **ATEX** standards, covering all gas groups, classes, divisions, and zones.

GRP – Glass Reinforced Polyester benefits:

- Corrosion-proof and chemical-resistant
- Lightweight yet durable
- Ideal for highly corrosive environments

Application industries:

- Chemical Processing Plants
- Marine & Ports
- Wastewater Treatment

type	supply voltage	lens colour	cable entry	description
------	----------------	-------------	-------------	-------------

GNExB2 series Multi-function beacon

GRP glass reinforced polyester

GNExB2 beacons are IECEx & ATEX approved for use in Zones 1, 2, 21 & 22, housed in robust, corrosion-proof GRP enclosures with extended temperature ranges. Offering explosion-proof performance for hazardous location signalling

- Five flash rates: 1Hz, 1.33Hz, 2Hz, double and triple flash (LED), double flash (Xenon)
- Robust corrosion proof GRP (*glass reinforced polyester*) enclosure
- Three remotely selectable stages/channels on DC versions (LED)

LED Beacon (for long-lasting)

GNEXB2LD2AC024AN1A1R/R	24 VDC	red	3 x M20	multifunction beacon
GNEXB2LD2AC230AN1A1R/A	230 VAC	amber	3 x M20	multifunction beacon

Xenon Beacon (ultra-bright, high-intensity - 15 joule strobe)

GNEXB2X15AC024AN1A1R/R	24 VDC	red	3 x M20	xenon beacon
GNEXB2X15AC230AN1A1R/A	230 VAC	amber	3 x M20	xenon beacon

Other voltages, colours available on request

Accessories for Multi-function beacon (above)

SP65-0001-A4	pole	316L SS pole-mount bracket kit for	GNExB2
SP65-0003-A4	sunshade	316L SS sun shade assembly kit for	GNExB2

GNExS series Horn/Sounder (64 alarm tone frequencies)

GRP glass reinforced polyester

type	supply voltage	dB @ 1m	colour	cable entry	description
------	----------------	---------	--------	-------------	-------------

GNExS series are high-performance GRP, globally certified alarm horn sounders designed for hazardous location signalling.

Approved for IECEx, and ATEX Zone 1, 2, 21 & 22.

Key features:

- Choice of 64 alarm tone frequencies
- Automatic synchronisation on multi-sounder system
- Ratchet adjustable 316 stainless steel bracket
- UL464 Public mode fire alarm use / CAN/ULC S525 Audible Signalling Devices for Fire Alarm

Flare (maximize sound projection in a specific direction)

GNEXS1FDC024AN1A1/R	24 VDC	110	red	2 x M20	horn/sounder
GNEXS1FAC230AN1A1/R	230 VAC	110	red	2 x M20	horn/sounder

Radial (omni-directional - disperses sound equally in all directions (360°))

GNEXS1RDC024AN1A1/R	24 VDC	110	red	2 x M20	horn/sounder
GNEXS1RAC230AN1A1/R	230 VAC	110	red	2 x M20	horn/sounder

GNExC1 series Combined Alarm Horn & Xenon Strobe

GRP glass reinforced polyester

GNExC1 is a globally certified alarm horn sounder with a compact, high output horn and a 5 Joule Xenon strobe beacon. Its robust GRP enclosures are mounted and pre-wired onto a 316 stainless steel back plate.

Approved for IECEx, and ATEX Zone 1, 2, 21 & 22

- 64 alarm tones, each of the 4 stage/channels can be remotely activated.
- SIL1 & 2 compliant to IEC61508 (2010)

GNEXC1N21AS1FAC024AN1A1/R	24 VDC	110	red	2 x M20	multifunc. beacon
GNEXC1N21AS1FAC230AN1A1/R	230 VAC	110	red	2 x M20	multifunc. beacon



GNEXB2LD2AC230AN1A1R/A



GNEXB2X15AC230AN1A1R/A



GNExS1F



GNExC1



STExB2

316L Stainless Steel – Designed for extreme marine & hygienic applications

316L stainless steel offers superior strength, corrosion resistance, and durability for extreme environments, including marine, offshore, and heavy industrial applications. Featuring high-output visual beacons, powerful audible sounders, combination units, and manual call points, it meets **SIL1** and **SIL2** compliance and is certified to **IECEX**, **UL**, **cUL**, and **ATEX** standards, covering all gas groups, classes, divisions, and zones.

316L Stainless Steel benefits:

- Highest resistance to saltwater corrosion
- Best for marine, offshore, and hygienic environments
- Long-term durability in extreme conditions

Application industries:

- Offshore Platforms
- Food & Beverage (*hygienic areas*)
- Pharmaceutical Production

type	supply voltage	lens colour	cable entry	description
------	----------------	-------------	-------------	-------------

STExB2 series - Multi-function beacon**Stainless Steel**

STExB2 beacons are IECEx & ATEX approved for use in Zones 1, 2, 21 & 22, housed in robust, corrosion-proof 316L stainless steel enclosures. Offering explosion-proof performance for hazardous location signalling for the most extreme environments.

- Five flash rates: 1Hz, 1.33Hz, 2Hz, double and triple flash (LED), double flash (Xenon)
- Robust corrosion proof GRP (*glass reinforced polyester*) enclosure
- Three remotely selectable stages/channels on DC versions (LED)

LED Beacon (for long-lasting)

STExB2LD2DC024AS1A1R/R	24 VDC	red	4 x M20	multifunction beacon
STExB2LD2AC230AS1A1R/A	230 VAC	amber	4 x M20	multifunction beacon

Xenon Beacon (ultra-bright, high-intensity - 15 joule strobe)

STExB2X10AC024AS1A1R/R	24 VDC	red	4 x M20	xenon beacon
STExB2X10AC230AS1A1R/A	230 VAC	amber	4 x M20	xenon beacon

Other voltages, colours, xenon intensity versions available on request

STExS1 series - Horn/Sounder (64 alarm tone frequencies)**Stainless Steel**

type	supply voltage	dB @ 1m	colour	cable entry	description
------	----------------	---------	--------	-------------	-------------

STExS1 series are high-performance, globally certified 316L grade stainless steel alarm horn sounders designed for hazardous location signalling. Approved for IECEx, and ATEX Zone 1, 2, 21 & 22.

Key features:

- Choice of 64 alarm tone frequencies
- Automatic synchronisation on multi-sounder system
- Ratchet adjustable 316 stainless steel bracket

Flare (maximize sound projection in a specific direction)

STExS1FDC024AS1A1/R	24 VDC	110	red	2 x M20	horn/sounder
STExS1FAC230AS1A1/R	230 VDC	110	red	2 x M20	horn/sounder

Radial (omni-directional - disperses sound equally in all directions (360°))

STExS1RDC024AS1A1/R	24 VDC	110	red	2 x M20	horn/sounder
STExS1RAC230AS1A1/R	230 VAC	110	red	2 x M20	horn/sounder

STExC1X05 series - Combined Alarm Horn & Xenon Strobe**Stainless Steel**

STExC1X05 is a globally certified 316L grade stainless steel alarm horn sounder with a compact, omni-directional horn and a 5 Joule Xenon strobe beacon. Its robust 316L grade stainless steel enclosure ensures corrosion resistance and durability.

Approved for Class I & II Div 1, Zone 1 & 20, IECEx, and ATEX Zone 1, 2, 21 & 22

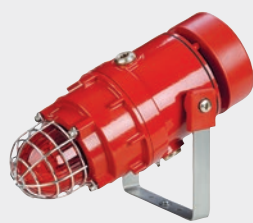
- 64 alarm tones, each of the 4 stage/channels can be remotely activated
- SIL1 & 2 compliant to IEC61508 (2010).

STExC1X05RDC024AS1A1R/R	24 VDC	110	red	2 x M20	multifunction beacon
STExC1X05RDC230AS1A1R/A	230 VAC	110	amber	2 x M20	multifunction beacon

Flare horn, other voltages, colours and xenon intensity versions available on request



STExS1R



STExC1X



IS-mini Range: High-Performance Hazardous Location Signalling Solutions

The compact IS-mini range provides a complete audible and visual signalling solution for Zone 0 applications. The IS-mA1M minialarm is also suitable for group I mining use. Operable from a single Zener barrier or galvanic isolator, these devices offer 49 alarm tones and adjustable flash rates.

- Supply voltage: 16 - 28 VDC via Zener barrier or galvanic isolator
- Protection: IP65 (*suitable for indoor or outdoor use*)
- Material: High impact ABS
- Colour: Red RAL3000
- Cable entries: 2 x M20 clearance gland knockouts facilitate easy wiring
- Certification: IECEx, ATEX, FM

type	lens colour	supply voltage	description	dimensions (mm)	
				Ø	H

Compact intrinsically safe signalling

IP65

LED warning signal

- Luminous intensity (*Candela*) : 23 cd
- Flash frequency : 1 Hz and 2 Hz

IS-MB1AN-R/A	amber	16-28 VDC	intrinsically safe LED beacon	89	85
IS-MB1AN-R/R	red	16-28 VDC	intrinsically safe LED beacon	89	85

Other colours available on request.

Alarm sounder

- Sound output : 100 dB @ 1m - 91 dB @ 3m
- Tones : 49 alarm tones with 3 stages/channels

IS-MA1AN-R	—	16-28 VDC	intrinsically safe alarm sounder	89	99
------------	---	-----------	----------------------------------	----	----

Combination signal

- Luminous intensity (*Candela*) : 23 cd
- Flash frequency : 1 Hz and 2 Hz
- Sound output : 100 dB @ 1m - 91 dB @ 3m
- Tones : 49 alarm tones with 3 stages/channels

IS-MC1AN-R/A	amber	16-28 VDC	intrinsically combination signal	89	116
IS-MC1AN-R/R	red	16-28 VDC	intrinsically combination signal	89	116

Intrinsically Safe Call Points: Hazardous Environments

IP68

GNExCP7 offers a corrosion-proof solution for Zones 0, 1, 2, 21 & 22, providing intrinsically safe equipment for the control of fire and gas alarm systems. Certified to IECEx and ATEX standards, these call points come with break glass options, including lift flap and no lift flap variations, catering to various requirements.

- Protection: IP66/67/68 (*suitable for indoor or outdoor use*)
- Material: GRP-corrosion-proof, anti static, UV stable
- Colour: Red RAL3000
- Cable entries: 3 x M20 clearance gland knockouts facilitate easy wiring
- Certification: IECEx, ATEX, EAC Ex, UL, DNV

type	description	dimensions (mm)		
		(H)	(W)	(D)

Break glass call point

GNExCP7BGSDNAP211RN	no lift flap break glass call point	95	98	76
GNExCP7BGSDLAP211RN	with lift flap break glass call point	95	98	76
GNExCP7PTSDLAP211RN	pushbutton with lift flap	95	98	76

Accessories for call points (above)

SP65-0002-A4	sunshade	316L SS sun shade assembly kit for	GNExCP7
--------------	----------	------------------------------------	---------



GNExCP7 - GRP enclosure Manual Call Point

Ex d explosion proof call point
316 stainless steel mechanism
IP66/67 rating



World Class Innovation, Local Commitment

PERTH

14 Lorries Court
Malaga, 6090
P: (08) 9248 0410

MELBOURNE

21 Kimberly Road,
Dandenong South, 3175
P: (03) 9706 4599

BRISBANE

U6, 57 Mortimer Road,
Acacia Ridge, 4110
P: (07) 3274 3327

SYDNEY

2 Squill place,
Blacktown, 2148
P: (02) 9676 1671

ADELAIDE

72 Wingfield Road,
Wingfield, 5013
P: (08) 8347 2499



Discover More

Free Call: 1800 252 995

www.mechtric.com.au