

CX Manual Call Point



- Weather proof IP66
- Available with 240V rated C/O contact or low voltage versions with monitoring resistor
- PVC coated glass element
- Supplied with test key
- Optional transparent flap

| Order Code | Description |
|------------|---|
| FUL52000R | N/O contact with monitoring resistor and LED for voltages up to 50V max |
| FUL52005R | C/O contact for voltages up to 250VAC |
| FUL59000CX | Replacement glass (pkt of 10) (75 x 40mm) |
| FUL59002 | Clear polycarbonate flap |

Specifications:

Switch action: Single pole N/O or single C/O contact

Contact rating: 0.5A at 50VAC/DC (low voltage version)
3A at 250VAC and 24VDC (Mains version)

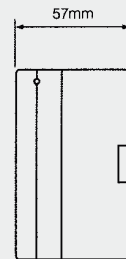
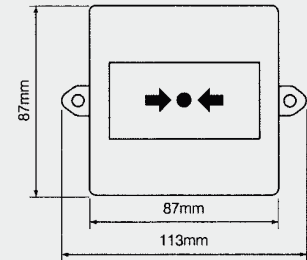
Monitoring resistor: 470Ω 1 W (others on request)

Protection: IP66

Temp range (°C): -25 to +70

Construction: ABS

Weight: 220g



Key Box

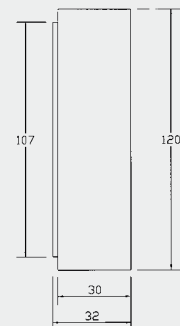
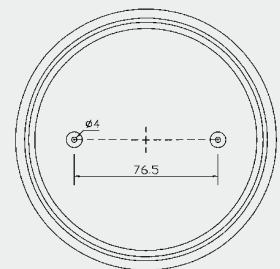


- "Break Glass" box for keys
- Tamper proof housing
- Replaceable glass

| Order Code | Description |
|------------|-------------------------|
| LAB10050 | Break glass for key box |
| LAB20045 | Replacement glass |

Specifications:

Construction: ABS housing (colour red)
Coated glass



Dimensions in mm