

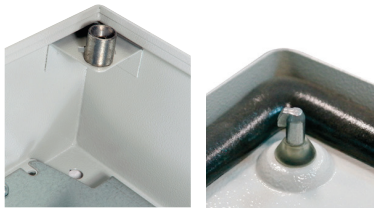
E- KABIN T Series Terminal Boxes



T Series

- Cabinet thickness 1,5 mm
- Protection IP67
- Epoxy polyester powder paint RAL 7035 60 - 80 μ.
- Galvanized 1 mm steel mounting plate
- M6 earth connection bolt on cover
- 120 mm depth size
- 270° turn fastening screws
- Wall mounting bracket included

Order Code	Dimensions (mm)	Mounting Plate Dimensions (mm)	Weight (kg)
19ET 20 20	H200 x W200 x D120	188x188x77	2.5
19ET 20 30	H200 x W300 x D120	188x288x77	3.2
19ET 20 40	H200 x W400 x D120	188x388x77	3.8
19ET 30 30	H300 x W300 x D120	288x288x77	4.3
19ET 30 40	H300 x W400 x D120	288x388x77	5.2
19ET 40 40	H400 x W400 x D120	388x388x77	6.6



270° turn fastening screws

E- KABIN XT Series Stainless Steel Terminal Boxes



XT Series

- Cabinet thickness 1 mm
- AISI 316 stainless steel (AISI 304 stainless steel optional)
- Protection IP67
- Galvanized 1 mm steel mounting plate
- M6 earth connection bolt on cover
- 120 mm depth size
- 270° turn fastening screws

Order Code	Dimensions (mm)	Mounting Plate Dimensions (mm)	Weight (kg)
19XT 20 20	H200 x W200 x D120	188x188x77	1.4
19XT 20 30	H200 x W300 x D120	188x288x77	2.7
19XT 20 40	H200 x W400 x D120	188x388x77	3.1
19XT 30 30	H300 x W300 x D120	288x288x77	3.8
19XT 30 40	H300 x W400 x D120	288x388x77	5.2
19XT 40 40	H400 x W400 x D120	388x388x77	6.1